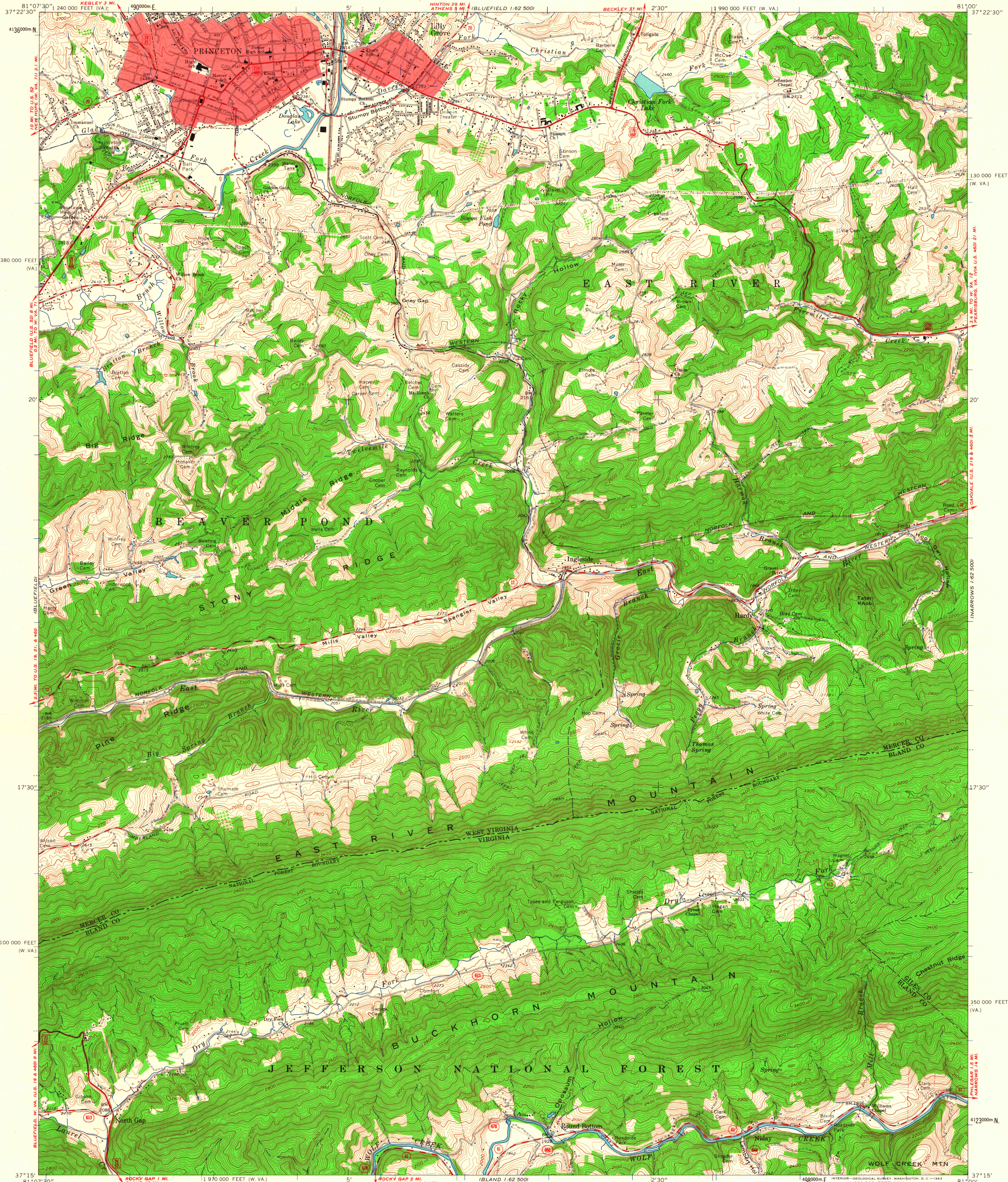


UNITED STATES
DEPARTMENT OF THE INTERIOR
GEOLOGICAL SURVEY

PRINCETON QUADRANGLE
WEST VIRGINIA
7.5 MINUTE SERIES (TOPOGRAPHIC)
SE/4 BLUEFIELD 15' QUADRANGLE



Maped, edited, and published by the Geological Survey
Control by USGS and USC&GS
Topography by photogrammetric methods from aerial
photographs taken 1961. Field checked 1962
Polyconic projection. 1927 North American datum
10,000-foot grids based on West Virginia coordinate system,
south zone, and Virginia coordinate system, south zone
1000-meter Universal Transverse Mercator grid ticks,
zone 17, shown in blue
Fine red dashed lines indicate selected fence and field lines where
generally visible on aerial photographs. This information is unchecked
Red tint indicates areas in which only landmark buildings are shown

TRUE NORTH
MAGNETIC NORTH
APPROXIMATE MEAN
DECLINATION, 1962

SCALE 1:24,000
1 0 1000 2000 3000 4000 5000 6000 7000 FEET
1 KILOMETER
CONTOUR INTERVAL 20 FEET
DATUM IS MEAN SEA LEVEL
THIS MAP COMPLIES WITH NATIONAL MAP ACCURACY STANDARDS
FOR SALE BY U.S. GEOLOGICAL SURVEY, WASHINGTON 25, D. C.
A FOLDER DESCRIBING TOPOGRAPHIC MAPS AND SYMBOLS IS AVAILABLE ON REQUEST



ROAD CLASSIFICATION
Heavy duty ——— Light duty ———
Medium duty ——— Unimproved dirt ———
U.S. Route — State Route

PRINCETON, W. VA. - VA.
SE/4 BLUEFIELD 15' QUADRANGLE
N3715-W8100/7.5