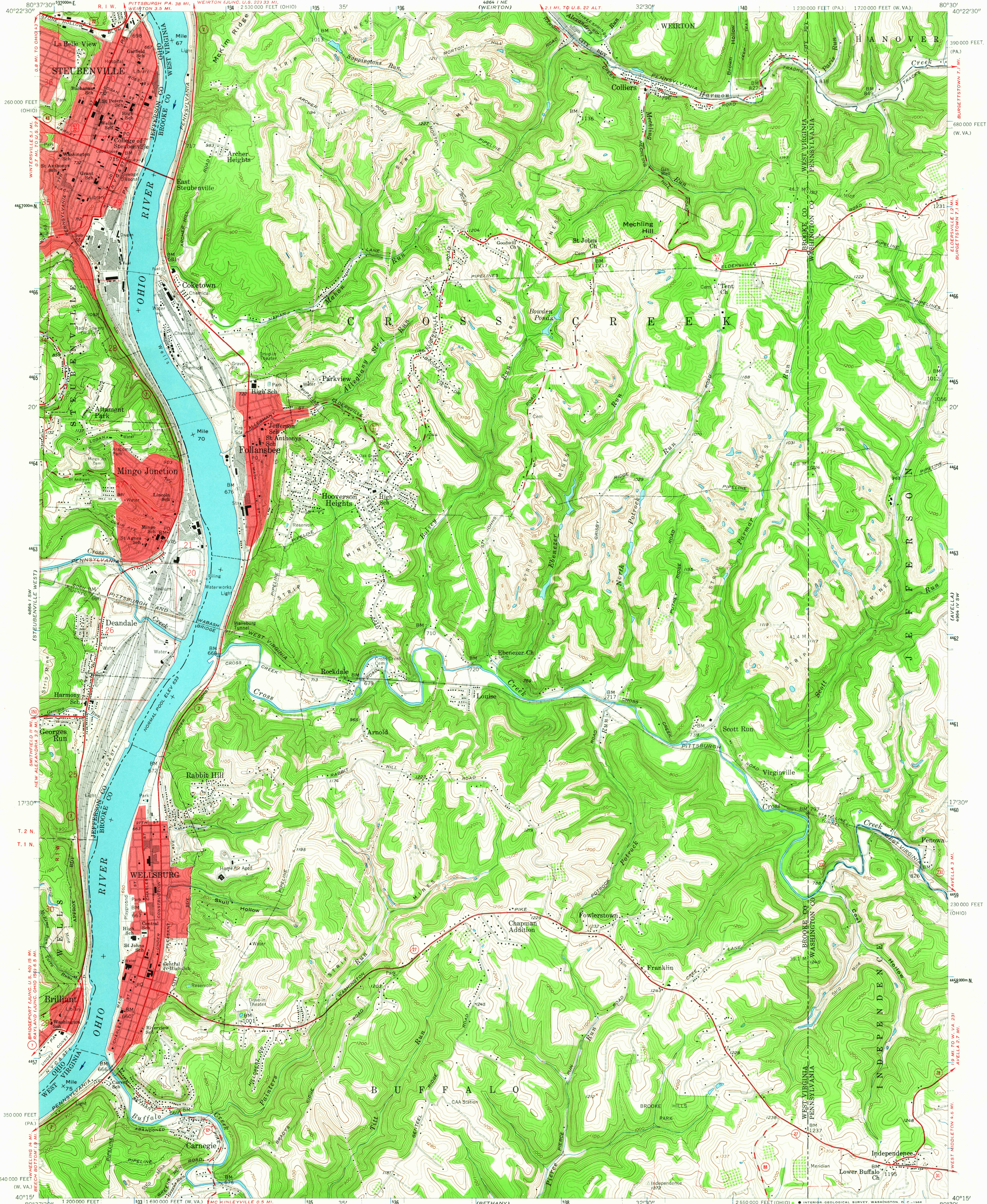


UNITED STATES  
DEPARTMENT OF THE INTERIOR  
GEOLOGICAL SURVEY

STEUBENVILLE EAST QUADRANGLE  
WEST VIRGINIA-PENNSYLVANIA-OHIO  
7.5 MINUTE SERIES (TOPOGRAPHIC)  
SE/4 STEUBENVILLE 15' QUADRANGLE



Mapped, edited, and published by the Geological Survey

Control by USGS, USC&GS, and USCE

Topography from aerial photographs by photogrammetric methods

Aerial photographs taken 1954. Field check 1958

Polyconic projection. 1927 North American datum

10,000-foot grid based on West Virginia coordinate system, north zone,

Pennsylvania coordinate system, south zone, and Ohio coordinate system,

north zone. 1000-meter Universal Transverse Mercator grid ticks,

zone 17, shown in blue

Fine red dashed lines indicate selected fence and field lines

visible on aerial photographs. This information is unchecked

Red tint indicates area in which only landmark buildings are shown

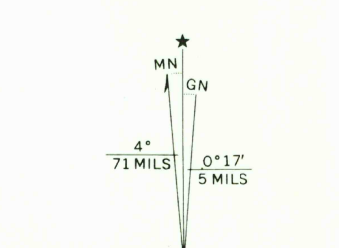
The state boundary as shown represents the approximate position of the

low waterline as determined from U.S. Corps of Engineers, Ohio River

charts, surveyed 1913, and supplementary information

Land lines based on Ohio River Base. Unlabeled wells are oil wells

Unchecked elevations are shown in brown



CONTOUR INTERVAL 20 FEET  
DOTTED LINES REPRESENT 10-FOOT CONTOURS  
DATUM IS MEAN SEA LEVEL

ROAD CLASSIFICATION	
Heavy-duty	Light-duty
Medium-duty	Unimproved dirt
U.S. Route	State Route

STEUBENVILLE EAST, W.VA.-PA.-OHIO  
SE/4 STEUBENVILLE 15' QUADRANGLE  
N4015-W8030/7.5

1958

AMS 4864 I SE-SERIES V854



U.S.G.S.

4000  
JUL 26 1966