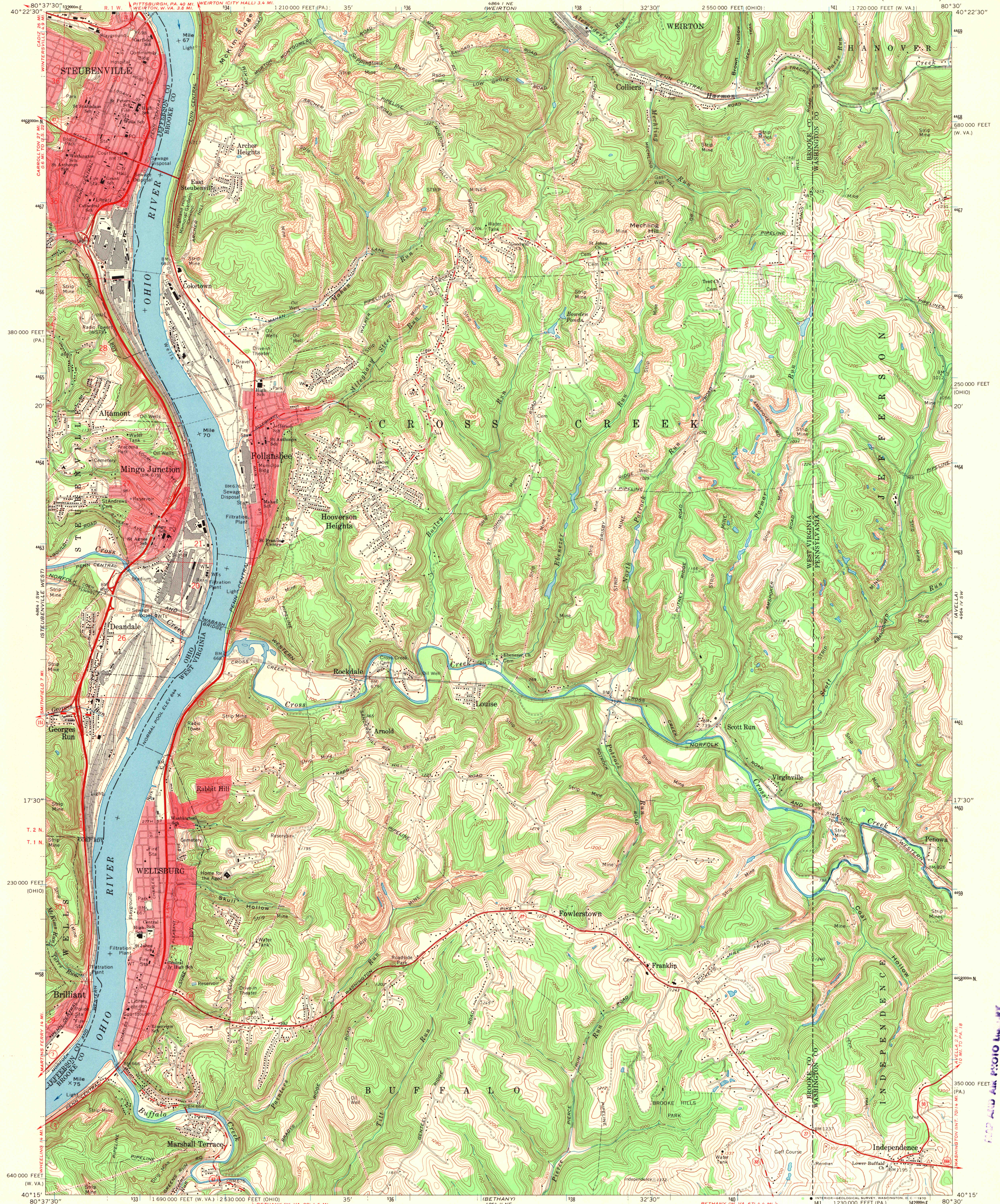
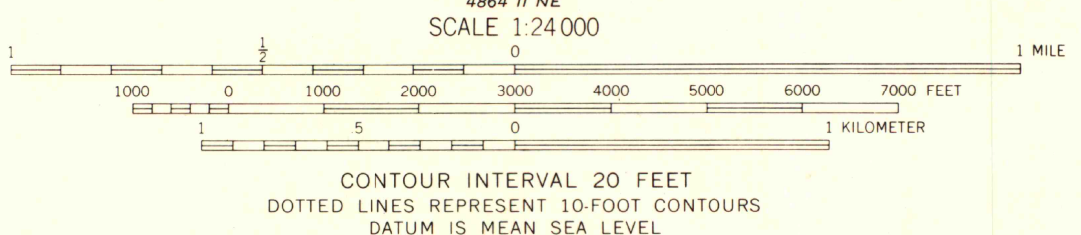


UNITED STATES
DEPARTMENT OF THE INTERIOR
GEOLOGICAL SURVEY

STEUBENVILLE EAST QUADRANGLE
WEST VIRGINIA-PENNSYLVANIA-OHIO
7.5 MINUTE SERIES (TOPOGRAPHIC)



Mapped, edited, and published by the Geological Survey
Revised in cooperation with State of Ohio agencies
Control by USGS, USCGS, and USCE
Topography by photogrammetric methods from aerial
photographs taken 1954. Field checked 1958. Revised
from aerial photographs taken 1966. Field checked 1968
Polyconic projection. 1927 North American datum
10,000-foot grids based on West Virginia coordinate system, north zone,
Pennsylvania coordinate system, south zone and Ohio coordinate system,
north zone. 1000-meter Universal Transverse Mercator grid ticks,
zone 17, shown in blue
Fine red dashed lines indicate selected fence and field lines where
generally visible on aerial photographs. This information is unchecked
The state boundary as shown represents the approximate position of the
low water line as determined from U.S. Corps of Engineers Ohio River
charts, surveyed 1913, and supplementary information
Red tint indicates areas in which only landmark buildings are shown
Ohio area lies within the Old Seven Ranges
Land lines based on the Ohio River Base



ROAD CLASSIFICATION
Primary highway, all weather, hard surface
Secondary highway, all weather, hard surface
Light-duty road, all weather, improved surface
Unimproved road, fair or dry hard surface
U. S. Route
State Route

STEUBENVILLE EAST (W. VA.)-PA.-OHIO
N4015-W8030/7.5
1968
AMS 4864 1 SE-SERIES V854

READ AND AM 1910 L. 17
AUG 8 1970
University of Michigan