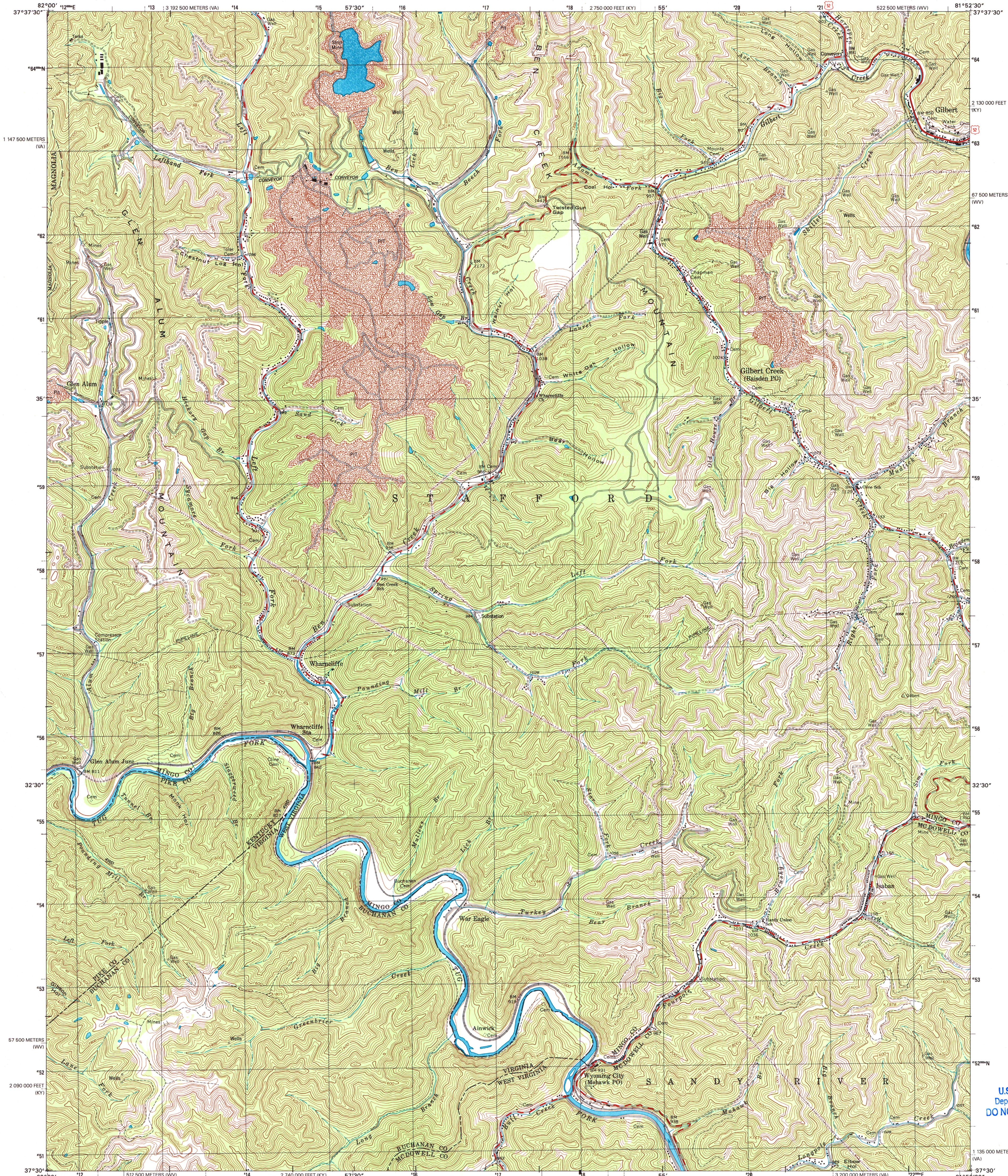


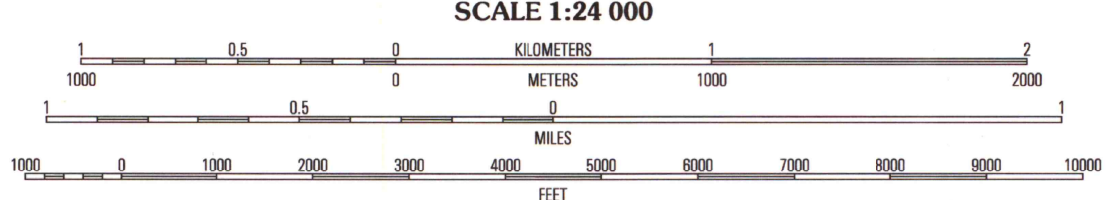
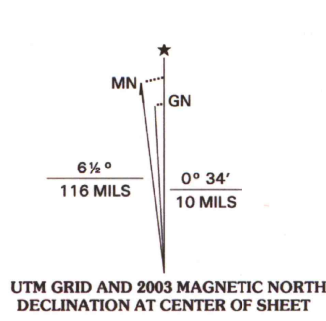


U.S. DEPARTMENT OF THE INTERIOR
U.S. GEOLOGICAL SURVEY

WHARNCLIFFE QUADRANGLE
WEST VIRGINIA-VIRGINIA-KENTUCKY
7.5-MINUTE SERIES (TOPOGRAPHIC)



Produced by the United States Geological Survey
Topography compiled 2001. Planimetry derived from imagery taken 2001 and other sources. Survey control current as of 1963. Boundaries current as of 2002.
North American Datum of 1983 (NAD 83). Projection and 1 000-meter grid: Universal Transverse Mercator, zone 17. 2 500-meter ticks: West Virginia Coordinate System of 1983 (south zone) and Virginia Coordinate System of 1983 (south zone). 10 000-foot ticks: Kentucky Coordinate System of 1983 (south zone).
North American Datum of 1927 (NAD 27) is shown by dashed corner ticks. The values of the shift between NAD 83 and NAD 27 for 7.5-minute intersections are obtainable from National Geodetic Survey NADCON software.
Houses of worship, schools, and other labeled buildings verified 1963.



CONTOUR INTERVAL 40 FEET
NATIONAL GEODETIC VERTICAL DATUM OF 1929
(TO CONVERT ELEVATIONS TO THE NORTH AMERICAN VERTICAL DATUM OF 1988, SUBTRACT 1 FOOT)
TO CONVERT FROM FEET TO METERS, MULTIPLY BY 0.3048
THIS MAP COMPLIES WITH NATIONAL MAP ACCURACY STANDARDS
FOR SALE BY U.S. GEOLOGICAL SURVEY, P.O. BOX 25286, DENVER, COLORADO 80225
AND VIRGINIA DIVISION OF MINERAL RESOURCES, CHARLOTTESVILLE, VIRGINIA 22903
KENTUCKY GEOLOGICAL SURVEY, LEXINGTON, KENTUCKY 40506
AND KENTUCKY DEPARTMENT OF COMMERCE, FRANKFORT, KENTUCKY 40601
A FOLDER DESCRIBING TOPOGRAPHIC MAPS AND SYMBOLS IS AVAILABLE ON REQUEST



ROAD CLASSIFICATION
Primary highway: Light-duty road, hard or improved surface
Secondary highway: Unimproved road
Interstate Route: U.S. Route: State Route

1	2	3	1 Barnabus
4	5	6	2 Man
6	7	8	3 Mallory
			4 Majestic
			5 Gilbert
			6 Hurley
			7 Panther
			8 Laeger

ADJOINING 7.5' QUADRANGLES

WHARNCLIFFE, WV-VA-KY
2001
NIMA 4659 III SW-SERIES V854

U.S. Regional
Depository Copy
DO NOT DISCARD