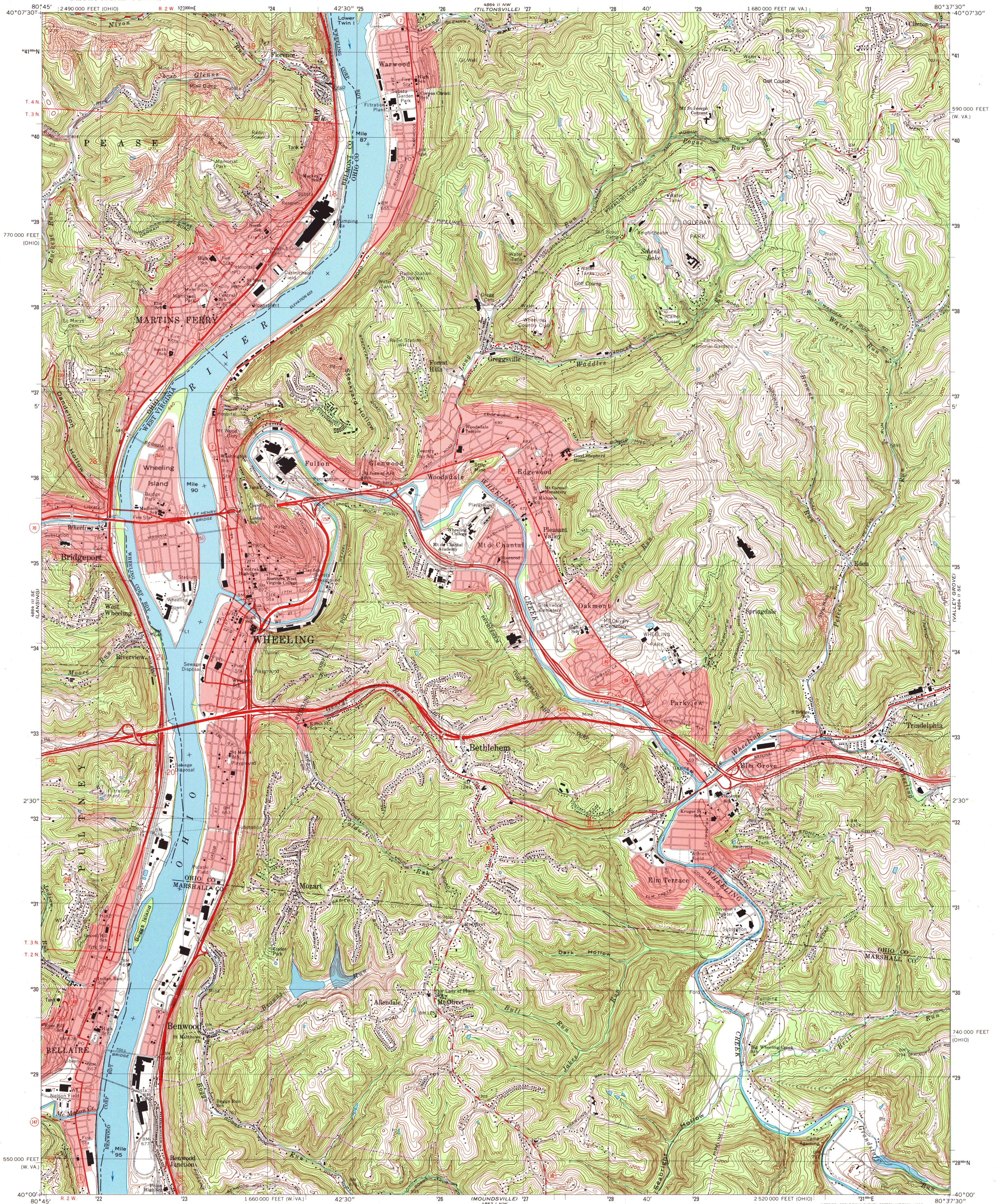
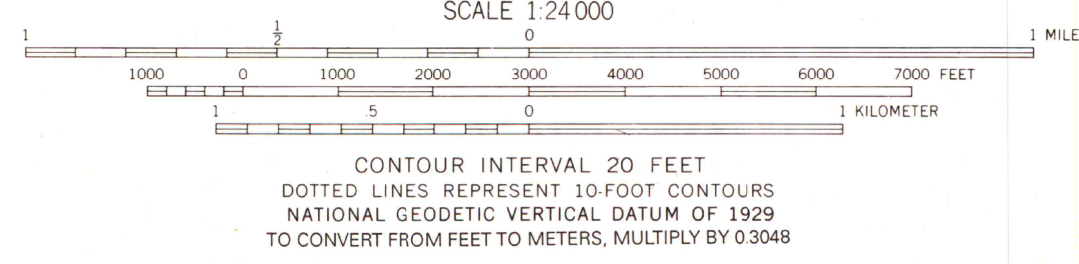
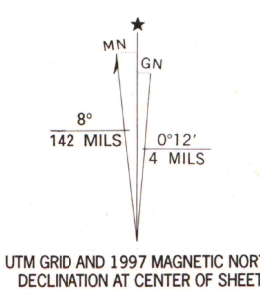


UNITED STATES
DEPARTMENT OF THE INTERIOR
GEOLOGICAL SURVEY

WHEELING QUADRANGLE
WEST VIRGINIA—OHIO
7.5 MINUTE SERIES (TOPOGRAPHIC)



Produced by the United States Geological Survey
Topography compiled 1954. Planimetry derived from imagery taken 1988. Photospectroscopy using imagery dated 1994; no major culture or drainage changes observed. Survey control current as of 1968 boundaries, other than corporate, revised 1997.
North American Datum of 1927 (NAD 27).
Projection: West Virginia coordinate system, north zone (Lambert conformal conic).
10 000-foot ticks: West Virginia coordinate system, north zone and Ohio coordinate system, south zone.
1000-meter Universal Transverse Mercator grid, zone 17.
North American Datum of 1983 (NAD 83) is shown by dashed corner ticks. The values of the shift between NAD 27 and NAD 83 for 7.5-minute intersections are obtainable from National Geodetic Survey NADCON software.
Ohio area lies within the Old Seven Ranges.
Land lines based on the Ohio River Base.
The State boundary as shown represents the approximate position of the low water line as determined from U.S. Corps of Engineers Ohio River charts, surveyed 1913, and supplementary information. Portions of Ohio—West Virginia boundary in dispute, not shown.



ROAD CLASSIFICATION

Primary highway, all weather, hard surface	Light-duty road, all weather, improved surface
Secondary highway, all weather, hard surface	Unimproved road, fair or dry weather

Interstate Route U. S. Route State Route

THIS MAP COMPLIES WITH NATIONAL MAP ACCURACY STANDARDS
FOR SALE BY U.S. GEOLOGICAL SURVEY, P.O. BOX 25286, DENVER, COLORADO 80225
A FOLDER DESCRIBING TOPOGRAPHIC MAPS AND SYMBOLS IS AVAILABLE ON REQUEST

A.H. ROBINSON
MAP LIBRARY
SEP 02 1998
University of Wisconsin
Madison
WHEELING, W. VA.—OHIO
1994
NIMA 4864 II SW—SERIES Y854

