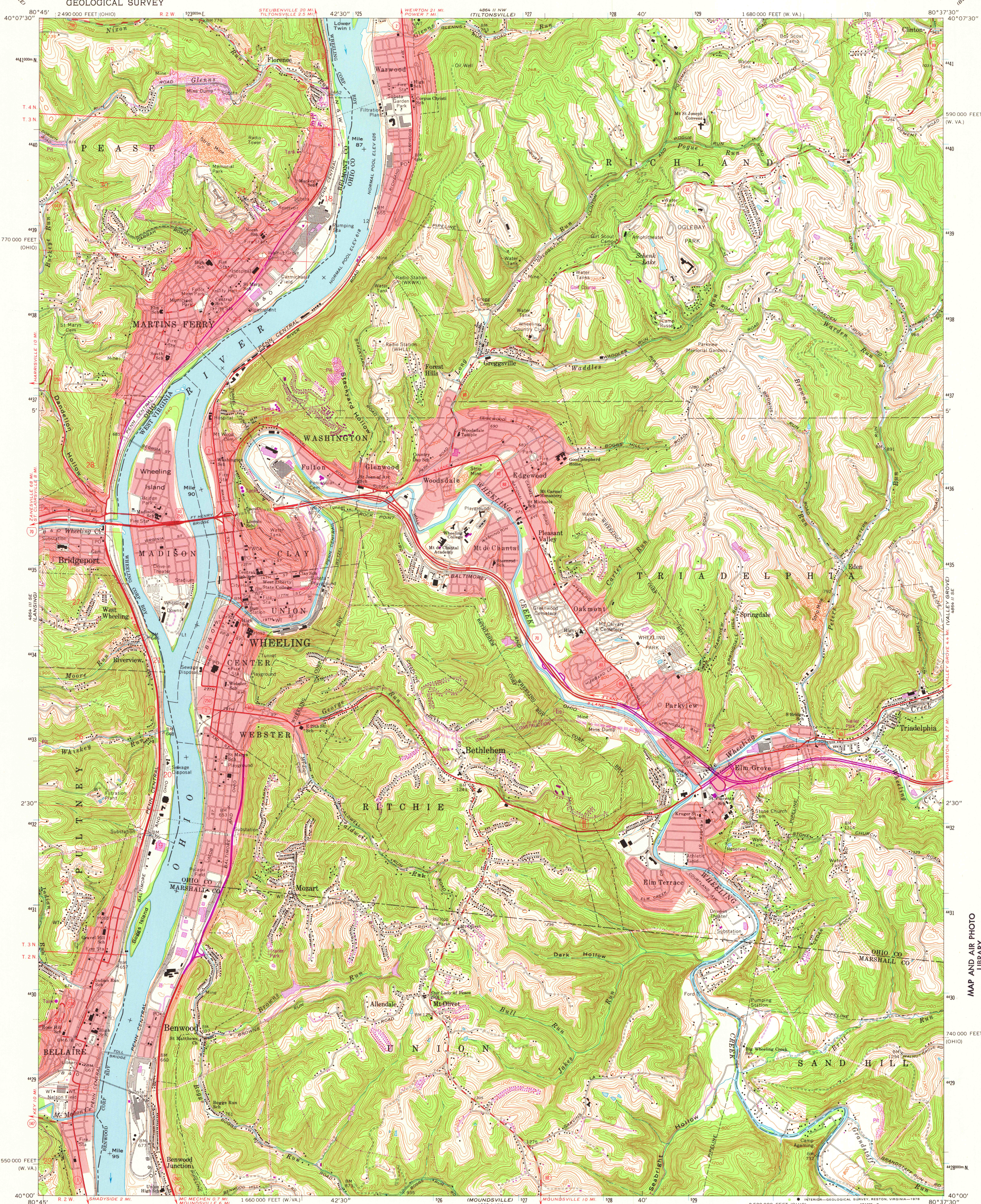


UNITED STATES
DEPARTMENT OF THE INTERIOR
GEOLOGICAL SURVEY

WHEELING QUADRANGLE
WEST VIRGINIA—OHIO
7.5 MINUTE SERIES (TOPOGRAPHIC)



MAP AND AIR PHOTO
LIBRARY

AUG 10 1978

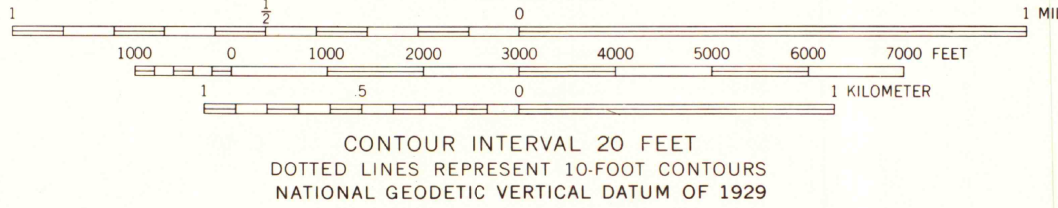
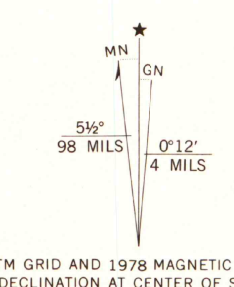
University of Wisconsin
Madison

MAP AND AIR PHOTO
LIBRARY

AUG 10 1978

University of Wisconsin
Madison

Mapped, edited, and published by the Geological Survey
Revised in cooperation with State of Ohio agencies
Control by USGS and USC&GS
Topography by photogrammetric methods from aerial photographs
taken 1954. Field checked 1956. Revised from aerial
photographs taken 1966. Field checked 1968
Polyconic projection, 1927 North American datum
10,000-foot grids based on West Virginia coordinate system,
north zone, and Ohio coordinate system, south zone
1000-meter Universal Transverse Mercator grid ticks,
zone 17, shown in blue
Fine red dashed lines indicate selected fence and field lines where
generally visible on aerial photographs. This information is unchecked
The state boundary as shown represents the approximate position of
the low water line as determined from U. S. Corps of Engineers
Ohio River charts, surveyed 1913, and supplementary information
Red tint indicates areas in which only landmark buildings are shown
Ohio area lies within the Old Seven Ranges
Land lines based on the Ohio River Base



ROAD CLASSIFICATION	
Primary highway, all weather, hard surface	Light-duty road, all weather, improved surface
Secondary highway, all weather, hard surface	Unimproved road, fair or dry weather
Interstate Route	U. S. Route
	State Route

WHEELING, W. VA.—OHIO

N4000—W8037.5/7.5

1968
PHOTOREVISED 1978
AMS 4864 II SW—SERIES V854

THIS MAP COMPLIES WITH NATIONAL MAP ACCURACY STANDARDS
FOR SALE BY U.S. GEOLOGICAL SURVEY, RESTON, VIRGINIA 22092
A FOLDER DESCRIBING TOPOGRAPHIC MAPS AND SYMBOLS IS AVAILABLE ON REQUEST

Revisions shown in purple compiled in cooperation with
State of Ohio agencies from aerial photographs taken
1976. Map edited 1978. This information not field checked
Portions of Ohio-West Virginia boundary in dispute, not shown