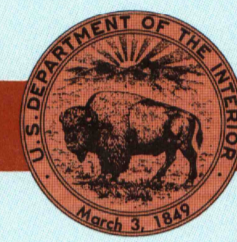


30 X 60 MINUTE QUADRANGLE
SHOWING

- Elevations in meters
- Highways, roads and other manmade structures
- Water features
- Woodland areas
- Geographic names




GEOLOGICAL SURVEY

1984

Produced by the United States Geological Survey
Compiled from USGS 1:24 000-scale topographic maps dated 1971-1978. Planimetry revised from aerial photographs taken 1977 and other source data. Revised information not field checked. Map edited 1984.
Projection and 10 000-meter grid, zone 17: Universal Transverse Mercator. 25 000-foot grid ticks based on West Virginia coordinate system, south zone. 1927 North American Datum. To place on the predicted North American Datum 1983 move the projection lines 7 meters south and 14 meters west.
There may be private inholdings within the boundaries of the National or State reservations shown on this map.

NATIONAL GEODETIC VERTICAL DATUM OF 1929
ELEVATIONS SHOWN TO THE NEAREST METER

THIS MAP COMPLIES WITH NATIONAL MAP ACCURACY STANDARDS

CONVERSION TABLE		DECLINATION DIAGRAM	ADJOINING MAPS				
Meters	Feet		1	2	3	4	5
1	3.2808						
2	6.5617		4	5			
3	9.8425						
4	13.1234						
5	16.4042						
6	19.6850						
7	22.9659						
8	26.2467						
9	29.5276						
10	32.8084						
To convert meters to feet multiply by 3.2808		UTM grid convergence (GN) and 1984 magnetic declination (MN) at center of map Diagram is approximate					
To convert feet to meters multiply by 0.3048							

FOR SALE BY U. S. GEOLOGICAL SURVEY
RESTON, VIRGINIA 22092
U. S. Regional
Depository Copy
DO NOT DISCARD

Topographic Map Symbols

- Primary highway, hard surface
- Secondary highway, hard surface
- Light duty road, principal street, hard or improved surface
- Other road or street, trail
- Railroad: standard gauge, narrow gauge
- Bridge, overpass, underpass
- Tunnel: road, railroad
- Built up area, locality, elevation
- Airport, landing field, landing strip
- National boundary
- State boundary
- County boundary
- National or State reservation boundary
- Land grant boundary
- U. S. public lands survey: range, township, section
- Range, township, section line, proposed
- Power transmission line, pipeline
- Dam; dam with lock
- Cemetery, building
- Windmill; water well; spring
- Mine shaft; adit or cave; mine, quarry; gravel pit
- Campground; picnic area; U. S. location monument
- Ruins; cliff dwelling
- Distorted surface: strip mine, lava, sand
- Contours: index; intermediate, supplementary
- Bathymetric contours: index, intermediate
- Stream, lake, perennial; intermittent
- Rapids, large and small; falls, large and small
- Area to be submerged; marsh, swamp
- Land subject to controlled inundation; woodland
- Scrub; mangrove
- Orchard; vineyard

A pamphlet describing topographic maps is available on request

ARTHUR H. ROBINSON MAP LIBRARY
University of Wisconsin-Madison

MAR 25 1985

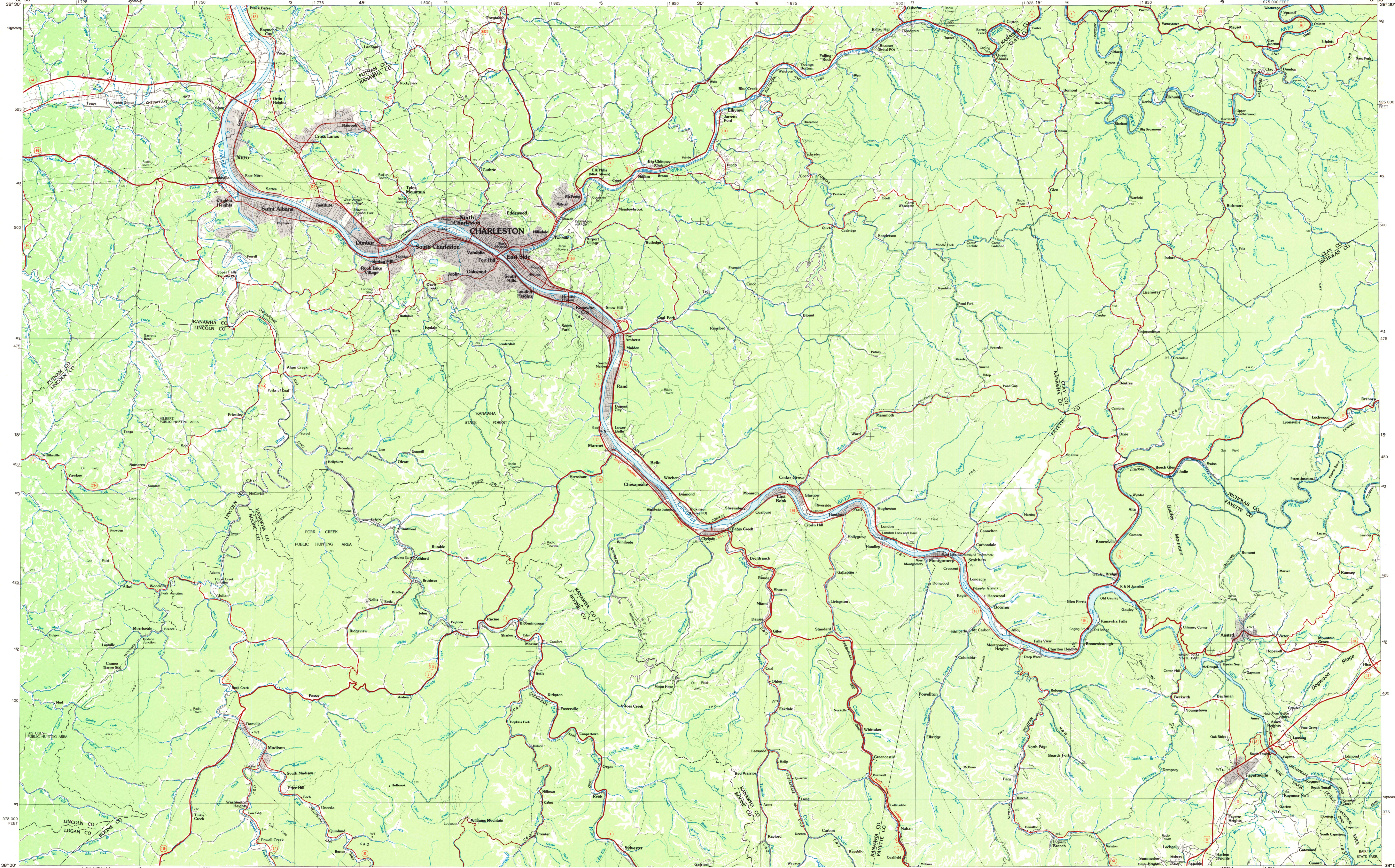
SET

8006-9/8

CHARLESTON, WEST VIRGINIA

38081-A1-PL-100

1984



KILOMETERS

1 2 3 4 5 6 7 8 9 10 11 12 13 14 15 16 17 18 19 20

MILES

1 2 3 4 5 6 7 8 9 10 11 12 13 14 15 16 17 18 19 20

SCALE 1:100 000

1 CENTIMETER ON THE MAP REPRESENTS 1 KILOMETER ON THE GROUND

5000 10000 15000 20000 25000 30000 35000 40000 45000 50000 55000 60000 65000 70000

METERS