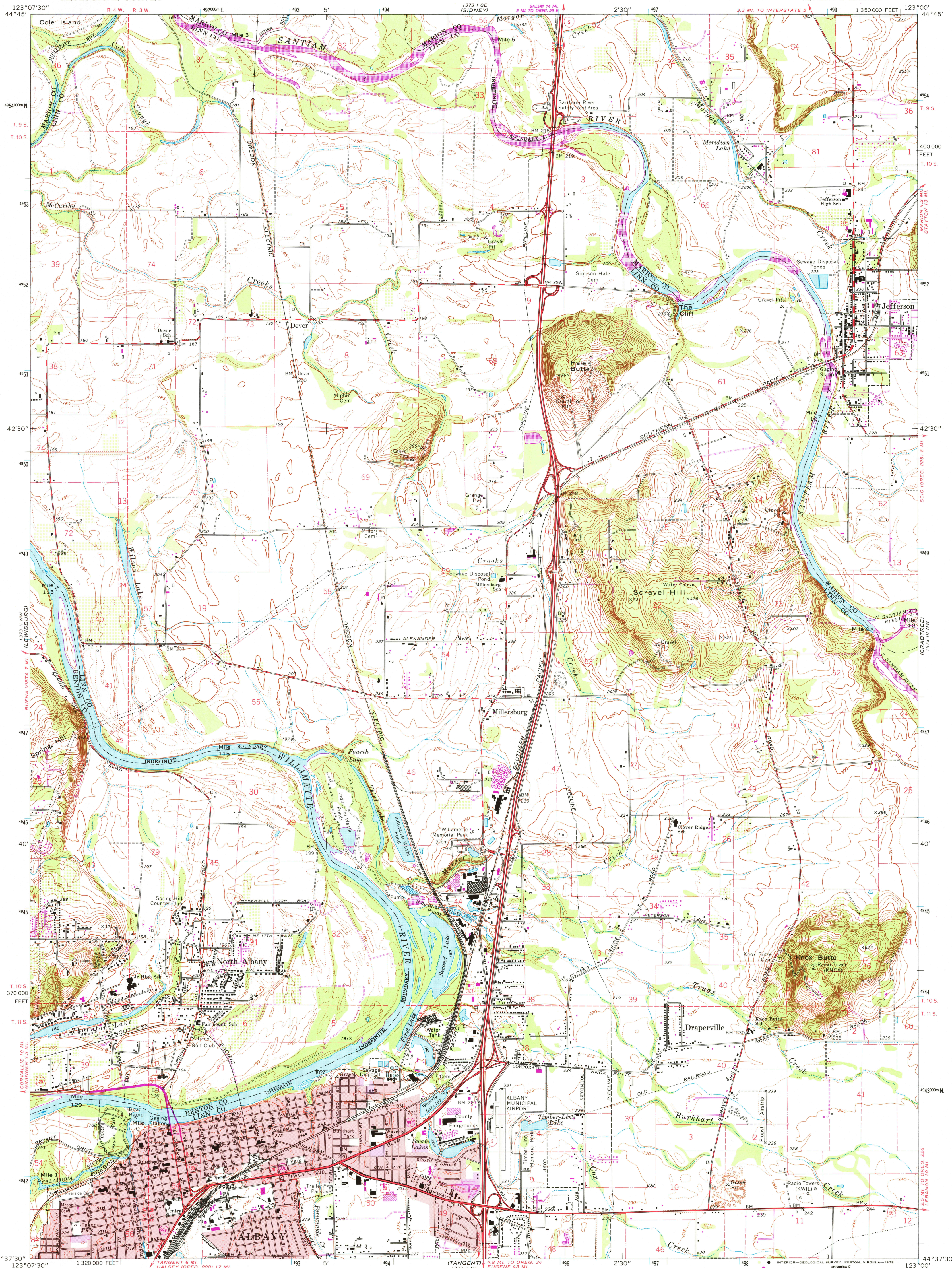


UNITED STATES
DEPARTMENT OF THE INTERIOR
GEOLOGICAL SURVEY

ALBANY QUADRANGLE
OREGON
7.5 MINUTE SERIES (TOPOGRAPHIC)
NE/4 ALBANY 15' QUADRANGLE



Mapped, edited, and published by the Geological Survey

Control by USGS, USC&GS, and State of Oregon

Topography by photogrammetric methods from aerial photographs taken 1967. Field checked 1970

Polyconic projection. 1927 North American datum
10,000-foot grid based on Oregon coordinate system,
north zone

1000-meter Universal Transverse Mercator grid ticks,
zone 10, shown in blue

Red tint indicates areas in which only landmark buildings are shown

Fine red dashed lines indicate selected fence lines

Revisions shown in purple compiled from aerial photographs
taken 1975. This information not field checked

Purple tint indicates extension of urban areas

SCALE 1:24 000

CONTOUR INTERVAL 10 FEET

DOTTED LINES REPRESENT 5-FOOT CONTOURS

NATIONAL GEODETIC VERTICAL DATUM OF 1929

UTM GRID AND 1975 MAGNETIC NORTH
DECLINATION AT CENTER OF SHEET

THIS MAP COMPLIES WITH NATIONAL MAP ACCURACY STANDARDS
FOR SALE BY U. S. GEOLOGICAL SURVEY, DENVER, COLORADO 80225, OR RESTON, VIRGINIA 22092
A FOLDER DESCRIBING TOPOGRAPHIC MAPS AND SYMBOLS IS AVAILABLE ON REQUEST

ROAD CLASSIFICATION

Primary highway, hard surface	Light-duty road, hard or improved surface
Secondary highway, hard surface	Unimproved road
Interstate Route	U. S. Route
	State Route



ALBANY, OREG.
NE/4 ALBANY 15' QUADRANGLE
N4437.5-W12300/7.5

USGS
Historical File
Topographic Division

1970
PHOTOREVISED 1975
AMS 1373 II NE-SERIES V892

JUN 22 1978

360