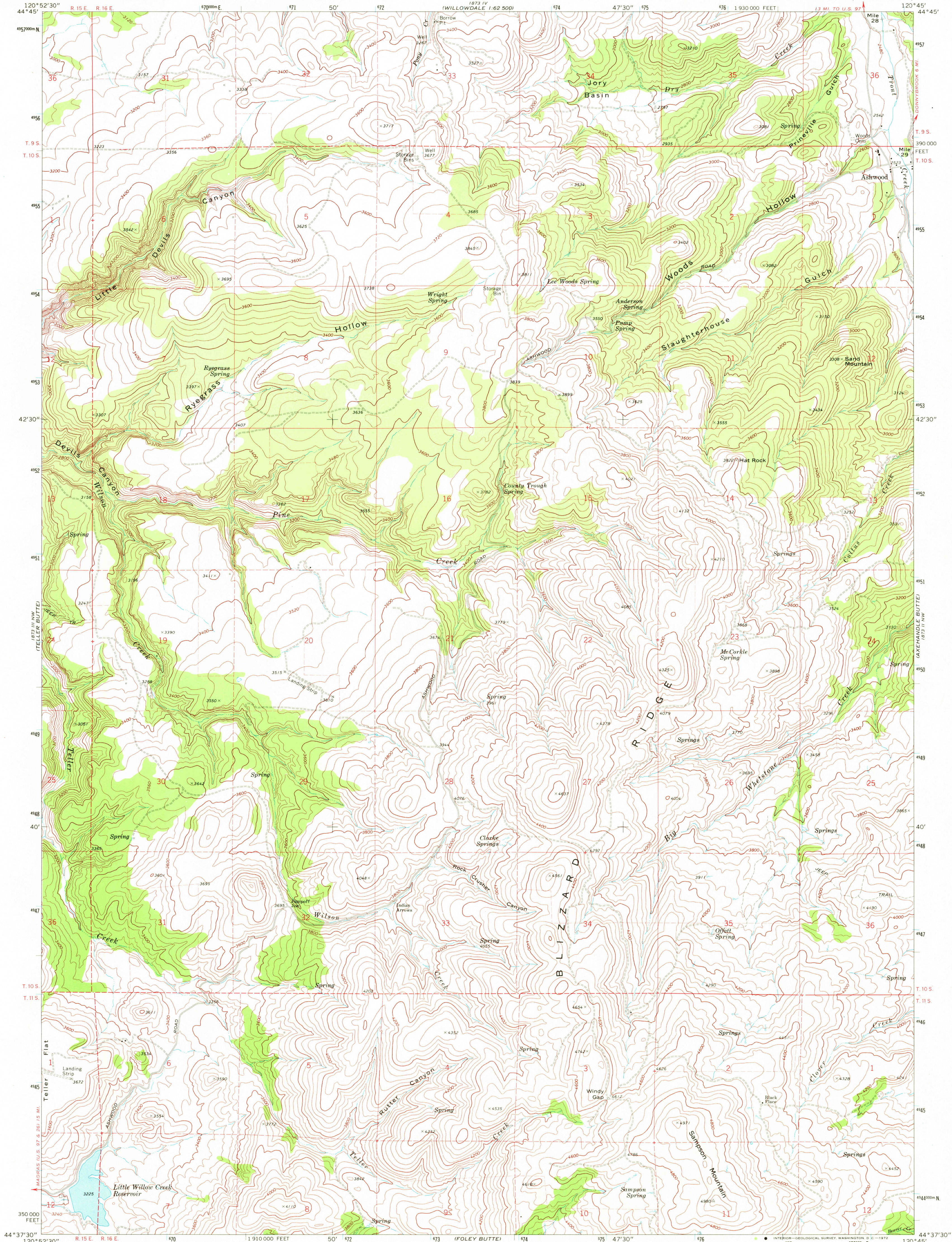
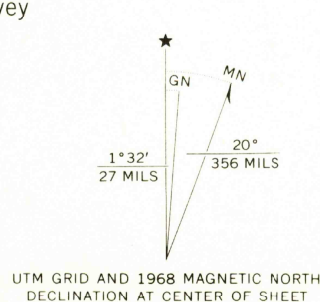


UNITED STATES  
DEPARTMENT OF THE INTERIOR  
GEOLOGICAL SURVEY

ASHWOOD QUADRANGLE  
OREGON—JEFFERSON CO.  
7.5 MINUTE SERIES (TOPOGRAPHIC)



Mapped, edited, and published by the Geological Survey  
Control by USGS and USC&GS  
Topography by photogrammetric methods from aerial  
photographs taken 1967. Field checked 1968  
Polyconic projection. 1927 North American datum  
10,000-foot grid based on Oregon coordinate system,  
north zone  
1000-meter Universal Transverse Mercator grid ticks,  
zone 10, shown in blue  
Fine red dashed lines indicate selected fence lines



SCALE 1:24,000  
CONTOUR INTERVAL 40 FEET  
DATUM IS MEAN SEA LEVEL



ROAD CLASSIFICATION  
Primary highway, hard surface  
Secondary highway, hard surface  
Unimproved road  
Interstate Route  
U. S. Route  
State Route

ASHWOOD, OREG.  
N4437.5—W12045.7/5

1968

AMS 1873 III NE—SERIES V892

USGS  
HISTORICAL FILE  
TOPOGRAPHIC DIVISION  
OCT 12 1972

2750