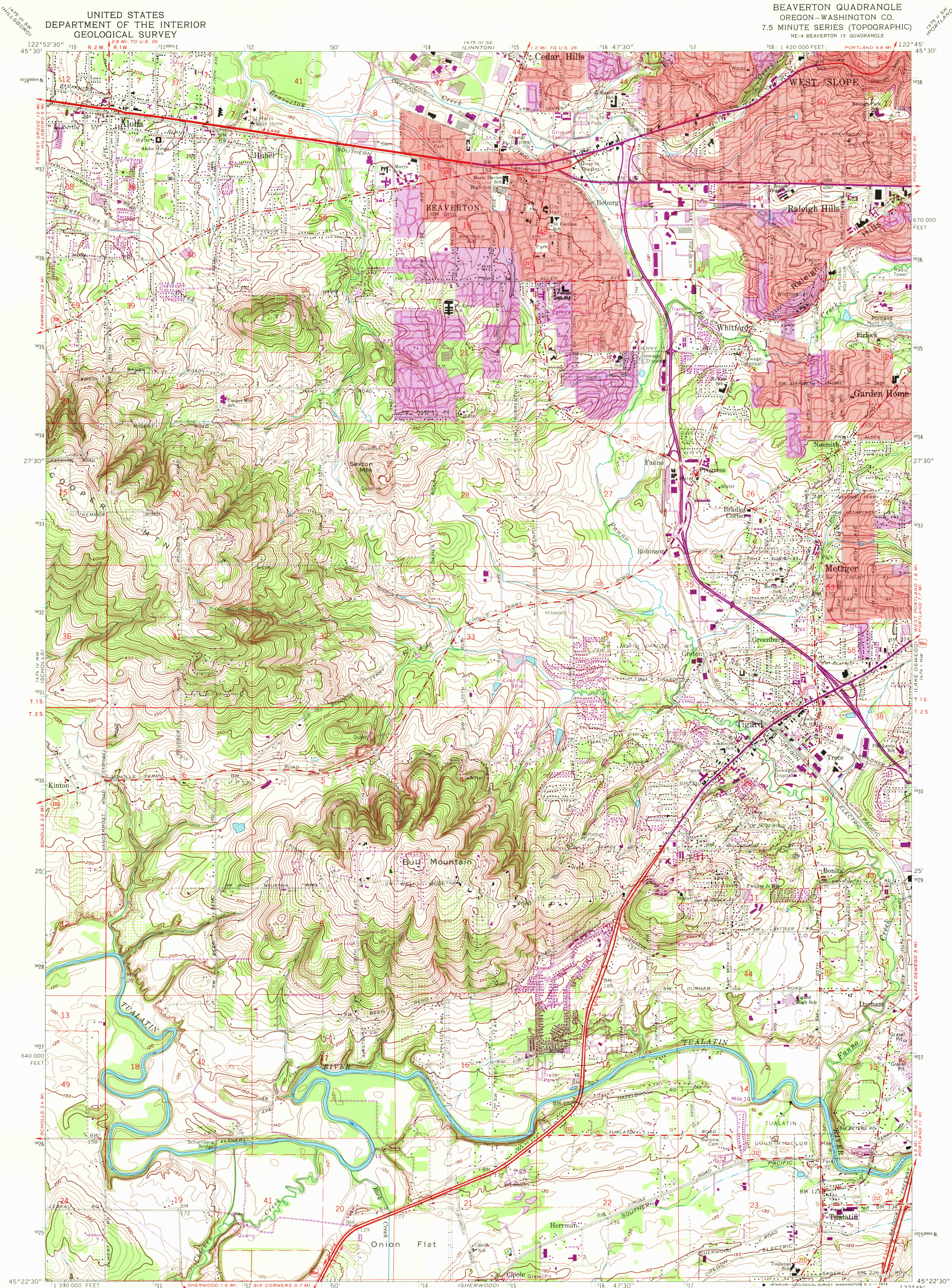


UNITED STATES
DEPARTMENT OF THE INTERIOR
GEOLOGICAL SURVEY

BEAVERTON QUADRANGLE
OREGON-WASHINGTON CO.
7.5 MINUTE SERIES (TOPOGRAPHIC)
NE 4 BEAVERTON 15' QUADRANGLE



Control by USGS, USC&GS, and State of Oregon

Topography from aerial photographs by photogrammetric methods

Aerial photographs taken 1952. Field check 1954

Revised from aerial photographs taken 1960. Field check 1961

Polyconic projection. 1927 North American datum

10,000-foot grid based on Oregon coordinate system, north zone

1000-meter Universal Transverse Mercator grid ticks, zone 10, shown in blue

Red tint indicates areas in which only landmark buildings are shown

Fine red dashed lines indicate selected fence lines

Revisions shown in purple compiled from aerial photographs taken 1970. This information not field checked

Purple tint indicates extension of urban areas

SCALE 1:24,000

CONTOUR INTERVAL 10 FEET

DATUM IS MEAN SEA LEVEL

ROAD CLASSIFICATION

Heavy-duty ——— Light-duty ———

Medium-duty ——— Unimproved dirt ———

Interstate Route U.S. Route State Route



BEAVERTON, OREG.

NE 4 BEAVERTON 15' QUADRANGLE

N4522.5 - W12245/7.5

1961

PHOTOREVISED 1970

AMS 1474 IV NE-SERIES V892

2965

FEB 1 1972

HISTORICAL FILE

TOPOGRAPHIC DIVISION