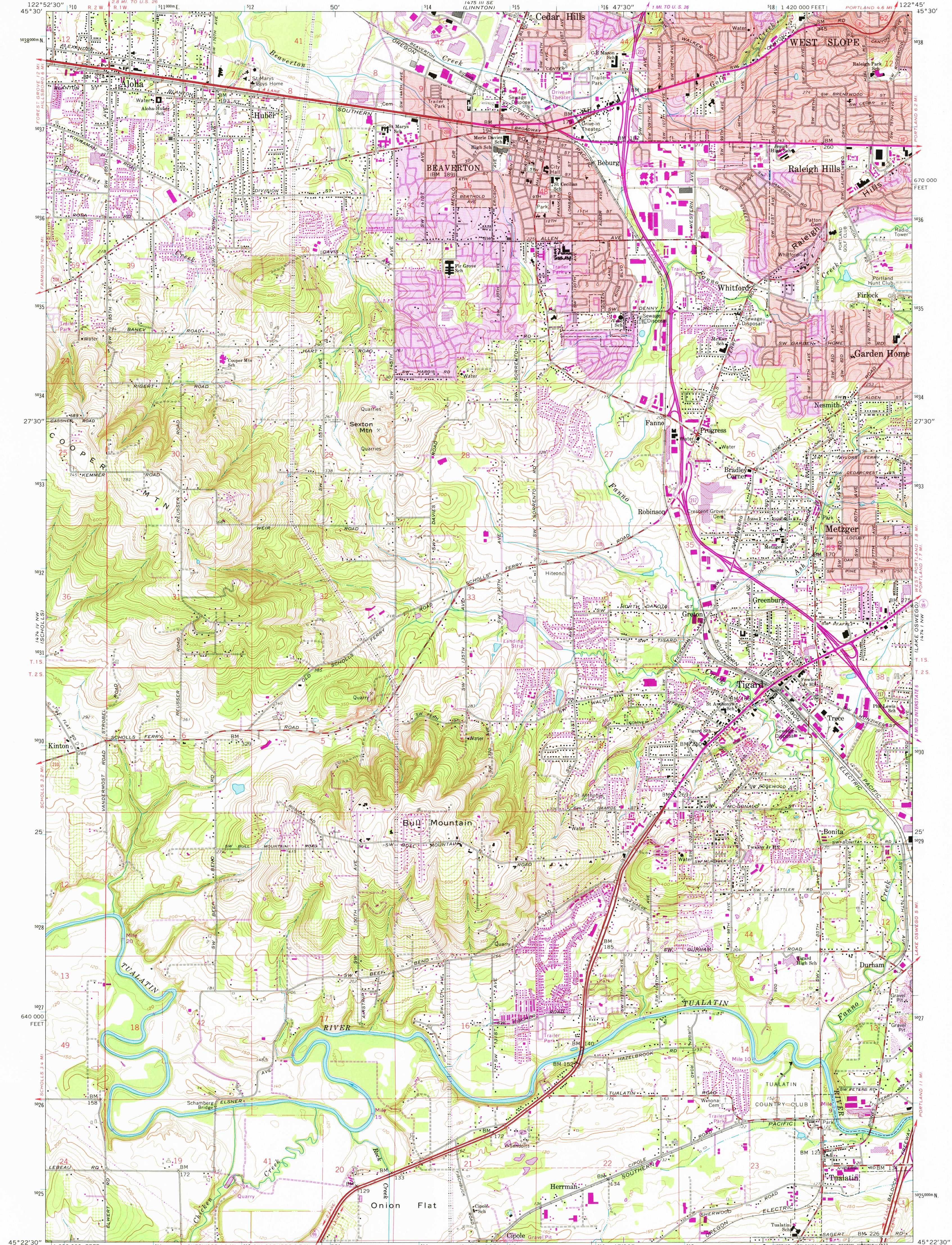


UNITED STATES
DEPARTMENT OF THE INTERIOR
GEOLOGICAL SURVEY

BEAVERTON QUADRANGLE
OREGON-WASHINGTON CO.
7.5 MINUTE SERIES (TOPOGRAPHIC)
NE/4 BEAVERTON 15' QUADRANGLE



Mapped, edited, and published by the Geological Survey
Control by USGS and NOS/NOAA, and State of Oregon

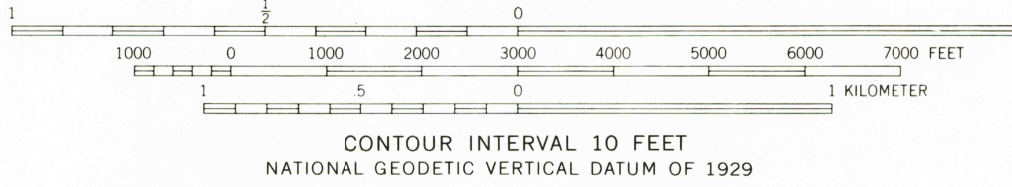
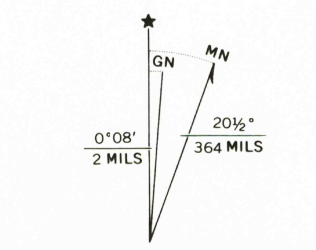
Topography from aerial photographs by photogrammetric methods
Aerial photographs taken 1952. Field checked 1954
Revised from aerial photographs taken 1960. Field check 1961

Projection and 10,000-foot grid ticks: Oregon coordinate
system, north zone (Lambert conformal conic)
1000-meter Universal Transverse Mercator grid ticks,
zone 10, shown in blue. 1927 North American datum

Red tint indicates areas in which only landmark buildings are shown
Fine red dashed lines indicate selected fence lines

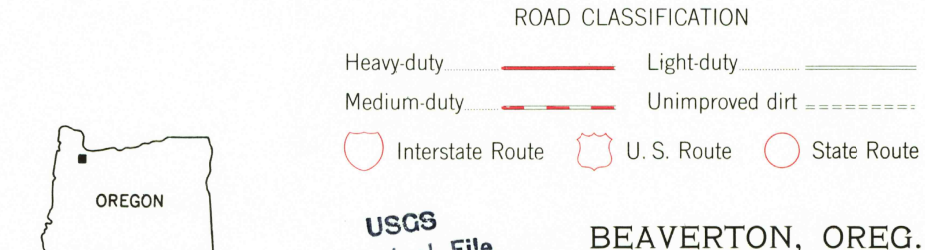
Revisions shown in purple compiled by the Geological Survey from aerial
photographs taken 1970 and 1975. This information not field checked

Purple tint indicates extension of urban areas



CONTOUR INTERVAL 10 FEET
NATIONAL GEODETIC VERTICAL DATUM OF 1929

THIS MAP COMPLIES WITH NATIONAL MAP ACCURACY STANDARDS
FOR SALE BY U.S. GEOLOGICAL SURVEY, DENVER, COLORADO 80225, OR RESTON, VIRGINIA 22092
A FOLDER DESCRIBING TOPOGRAPHIC MAPS AND SYMBOLS IS AVAILABLE ON REQUEST



ROAD CLASSIFICATION
Heavy-duty Medium-duty Light-duty
Unimproved dirt
Interstate Route U.S. Route State Route

USGS
Historical File
Topographic Division
BEAVERTON, OREG.
NE/4 BEAVERTON 15' QUADRANGLE
N4522.5 - W12245/7.5

1961
PHOTOREVISED 1970 AND 1975
AMS 1474 IV NE-SERIES V892

JUL 20 1978
3950