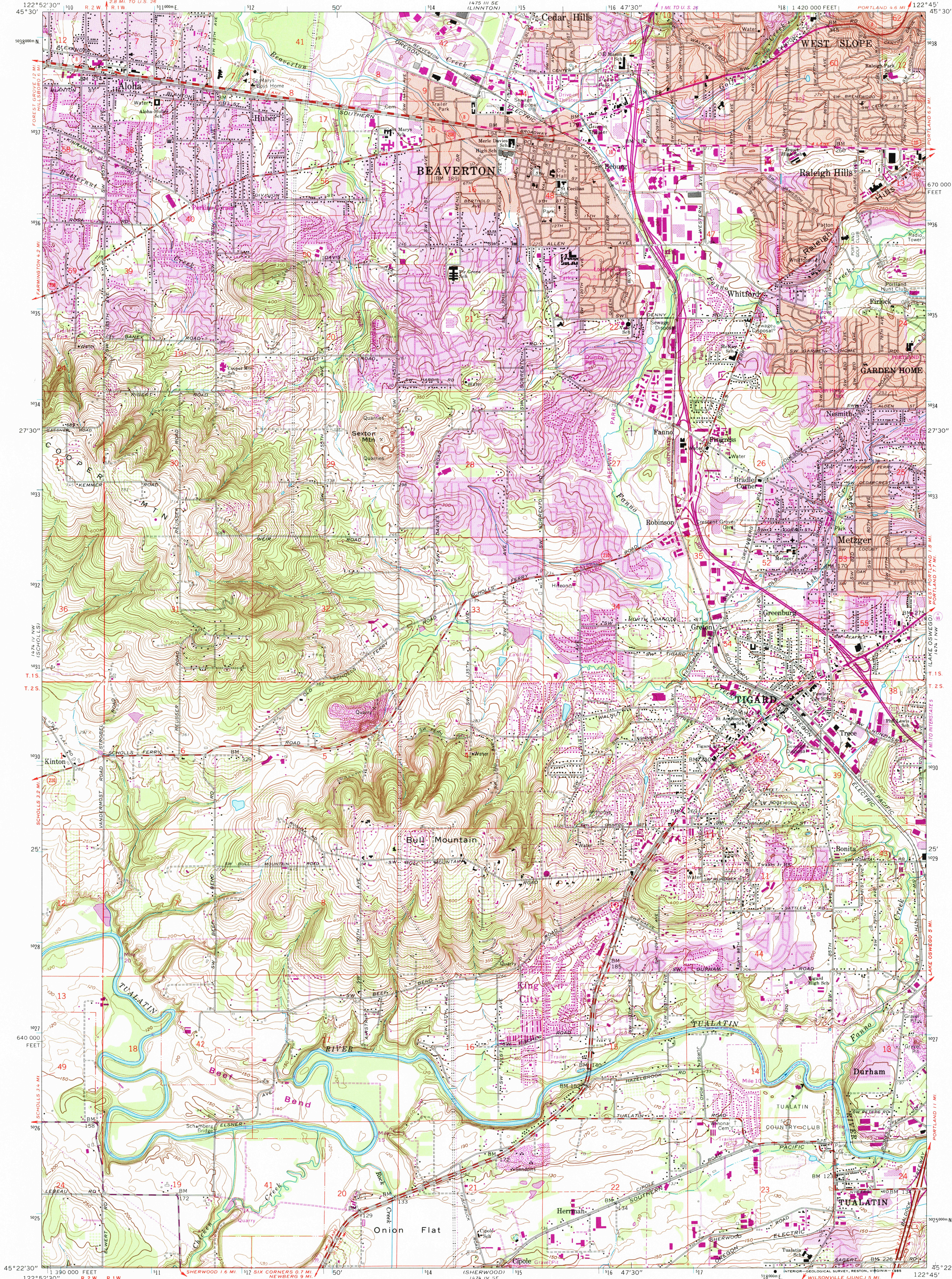
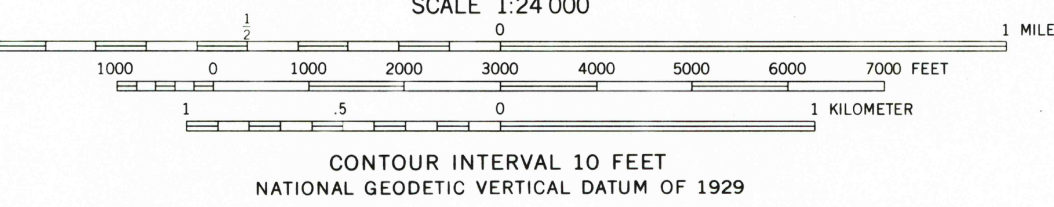
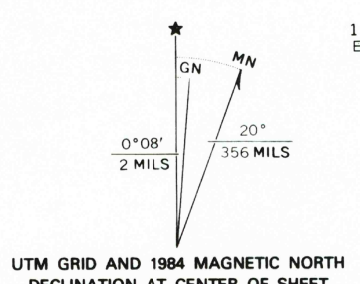


UNITED STATES
DEPARTMENT OF THE INTERIOR
GEOLOGICAL SURVEY

BEAVERTON QUADRANGLE
OREGON-WASHINGTON CO.
7.5 MINUTE SERIES (TOPOGRAPHIC)
NE/4 BEAVERTON 15' QUADRANGLE



Mapped, edited, and published by the Geological Survey
Control by USGS and NOS/NOAA, and State of Oregon
Topography from aerial photographs by photogrammetric methods
Aerial photographs taken 1952. Field checked 1954
Revised from aerial photographs taken 1960. Field check 1961
Projection and 10,000-foot grid ticks: Oregon coordinate system, north zone (Lambert conformal conic)
1000-meter Universal Transverse Mercator grid ticks, zone 10, shown in blue. 1927 North American datum
To place on the predicted North American Datum 1983 move the projection lines 23 meters north and 94 meters east as shown by dashed corner ticks
Red tint indicates areas in which only landmark buildings are shown
Fine red dashed lines indicate selected fence lines



- ROAD CLASSIFICATION
- Heavy duty
 - Medium-duty
 - Light-duty
 - Unimproved dirt
 - Interstate Route
 - U.S. Route
 - State Route

BEAVERTON, OREG.
NE/4 BEAVERTON 15' QUADRANGLE
45122-07-TF-024

1961
PHOTOREVISED 1984
DMA 1474 IV NE-SERIES V892

THIS MAP COMPLIES WITH NATIONAL MAP ACCURACY STANDARDS
FOR SALE BY U.S. GEOLOGICAL SURVEY, DENVER, COLORADO 80225, OR RESTON, VIRGINIA 22092
A FOLDER DESCRIBING TOPOGRAPHIC MAPS AND SYMBOLS IS AVAILABLE ON REQUEST

Revisions shown in purple compiled by Geological Survey
from aerial photographs taken 1981 and other sources
This information not field check. Map edited 1984
Purple tint indicates extension of urban areas

RETURN TO:
USGS AND HISTORICAL MAP ARCHIVES