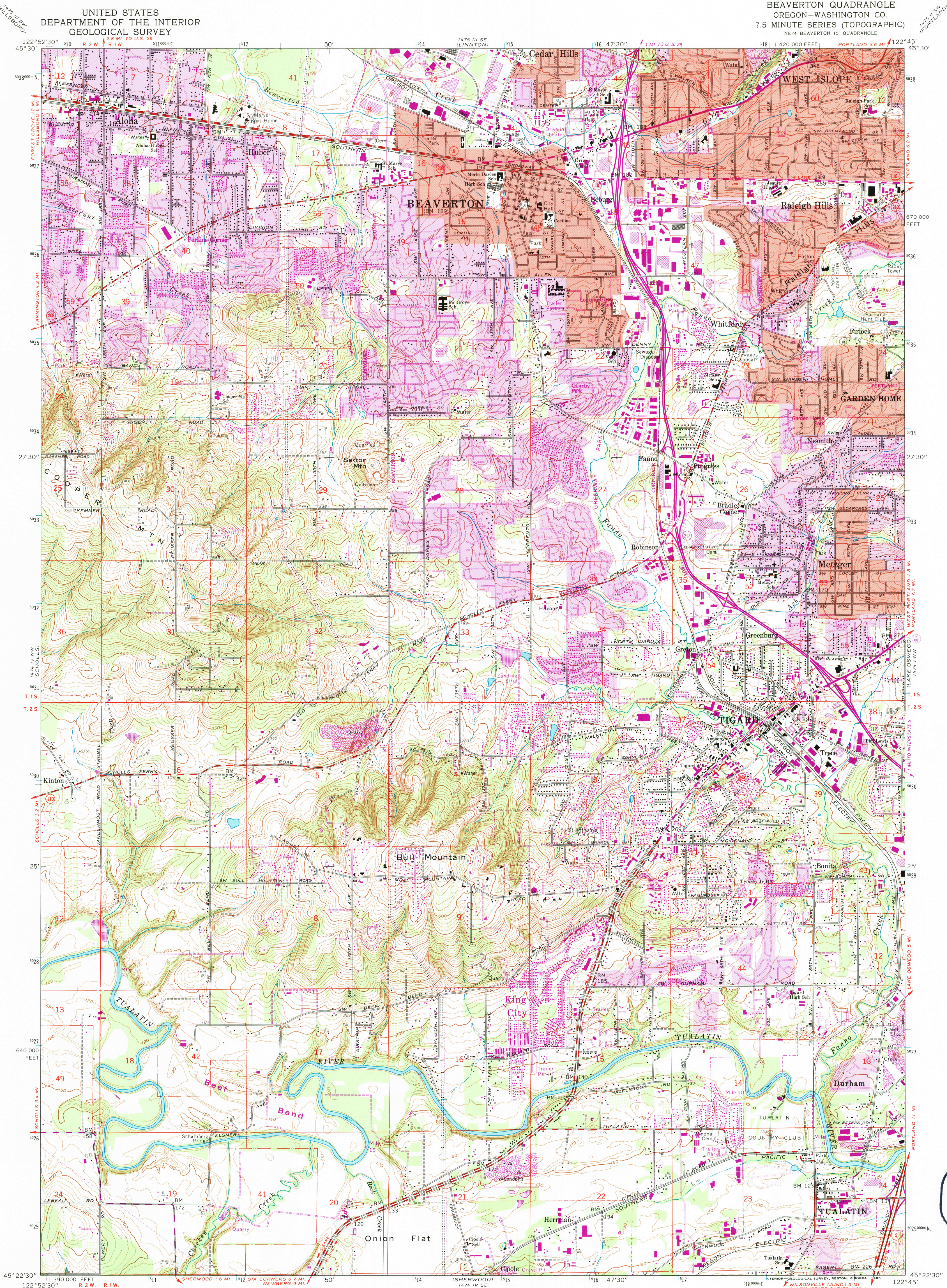
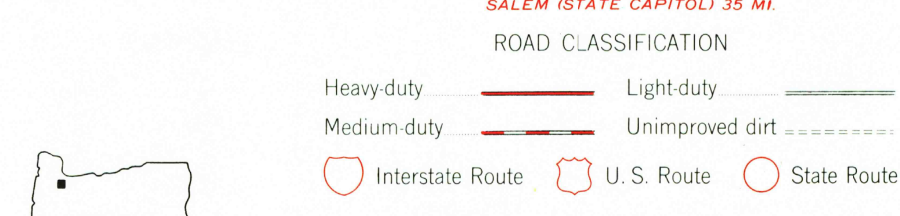
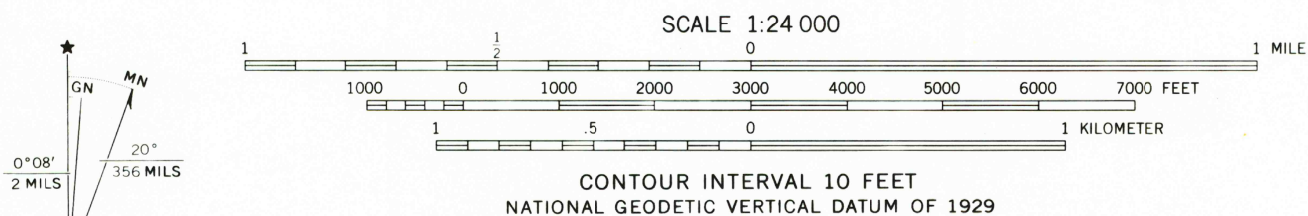


UNITED STATES
DEPARTMENT OF THE INTERIOR
GEOLOGICAL SURVEY

BEAVERTON QUADRANGLE
OREGON—WASHINGTON CO.
7.5 MINUTE SERIES (TOPOGRAPHIC)
NE 1/4 BEAVERTON 15' QUADRANGLE



Maped, edited, and published by the Geological Survey
Control by USGS and NOS/NOAA, and State of Oregon
Topography from aerial photographs by photogrammetric methods
Aerial photographs taken 1952. Field checked 1954
Revised from aerial photographs taken 1960. Field check 1961
Projection and 10,000-foot grid ticks: Oregon coordinate system, north zone (Lambert conformal conic)
1000-meter Universal Transverse Mercator grid ticks, zone 10, shown in blue. 1927 North American datum
To place on the predicted North American Datum 1983 move the projection lines 23 meters north and 94 meters east as shown by dashed corner ticks
Red tint indicates areas in which only landmark buildings are shown
Fine red dashed lines indicate selected fence lines



BEAVERTON, OREG.
NE 1/4 BEAVERTON 15' QUADRANGLE
45122-D7-TF-024
1961
PHOTOREVISED 1984
DMA 1474 IV NE—SERIES V892

USGS NHD HISTORICAL
MAP ARCHIVES
NOV 29 1995
REC'D FILE COPY

