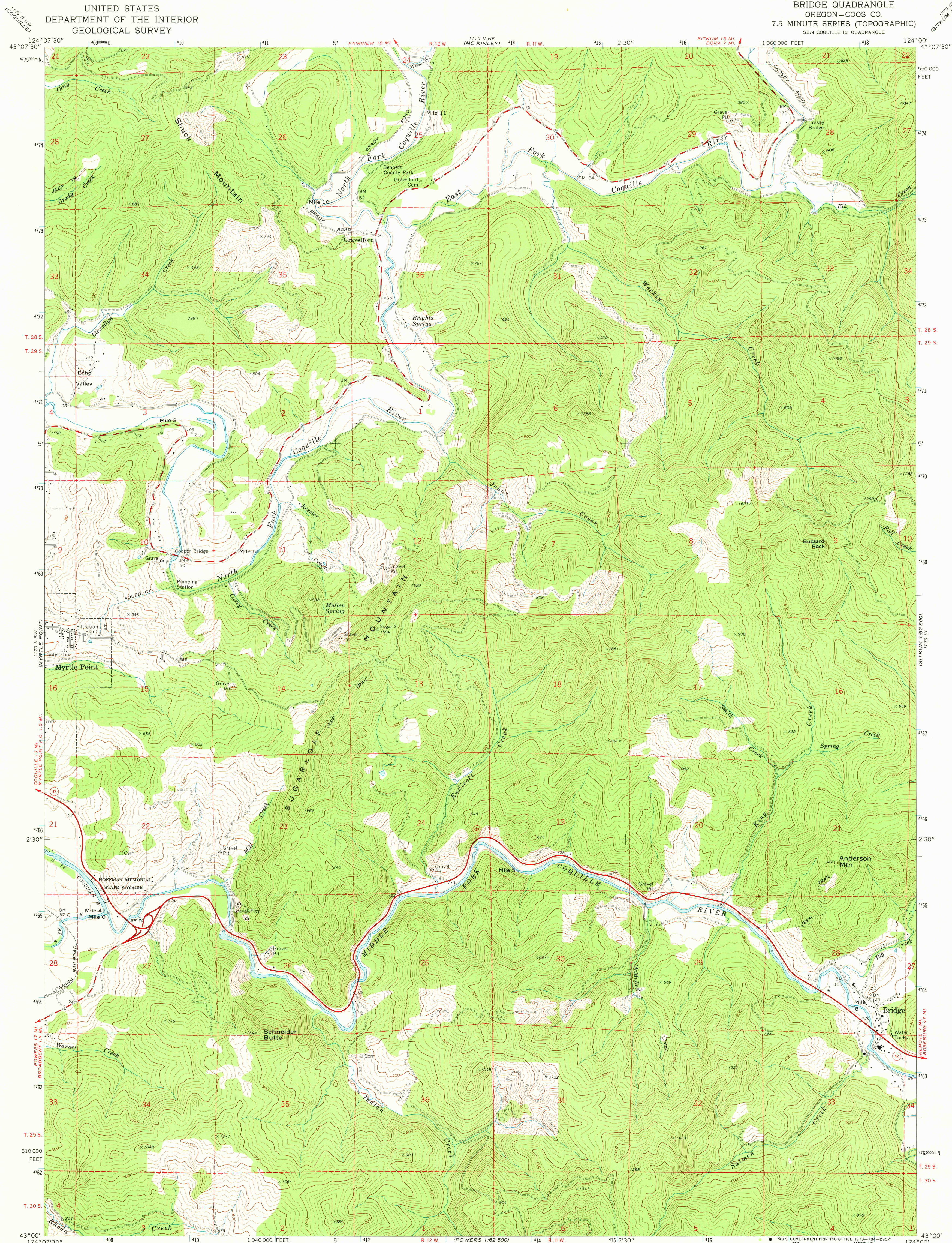
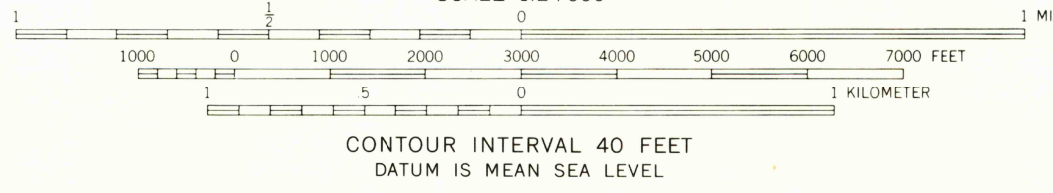
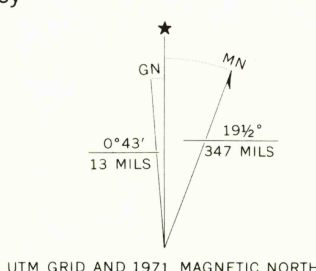


UNITED STATES  
DEPARTMENT OF THE INTERIOR  
GEOLOGICAL SURVEY

BRIDGE QUADRANGLE  
OREGON—COOS CO.  
7.5 MINUTE SERIES (TOPOGRAPHIC)  
SE/4 COQUILLE 15' QUADRANGLE



Mapped, edited, and published by the Geological Survey  
Control by USGS and USC&GS  
Topography by photogrammetric methods from aerial  
photographs taken 1969-70. Field checked 1971  
Projection and 10,000-foot grid ticks: Oregon coordinate  
system, south zone (Lambert conformal conic)  
1000-meter Universal Transverse Mercator grid ticks,  
zone 10, shown in blue. 1927 North American datum  
Fine red dashed lines indicate selected fence lines



- ROAD CLASSIFICATION
- |                                    |  |
|------------------------------------|--|
| Primary highway,<br>hard surface   | Light-duty road, hard or<br>improved surface |
| Secondary highway,<br>hard surface | Unimproved road                              |
| Interstate Route                   | U. S. Route                                  |
|                                    | State Route                                  |

USGS  
HISTORICAL FILE  
TOPOGRAPHIC DIVISION

BRIDGE, OREG.  
SE/4 COQUILLE 15' QUADRANGLE  
N4300—W12400/7.5

1971

AMS 1170 II SE—SERIES V892

FOR SALE BY U. S. GEOLOGICAL SURVEY, DENVER, COLORADO 80225, OR WASHINGTON, D. C. 20242  
A FOLDER DESCRIBING TOPOGRAPHIC MAPS AND SYMBOLS IS AVAILABLE ON REQUEST

2500  
50 plane