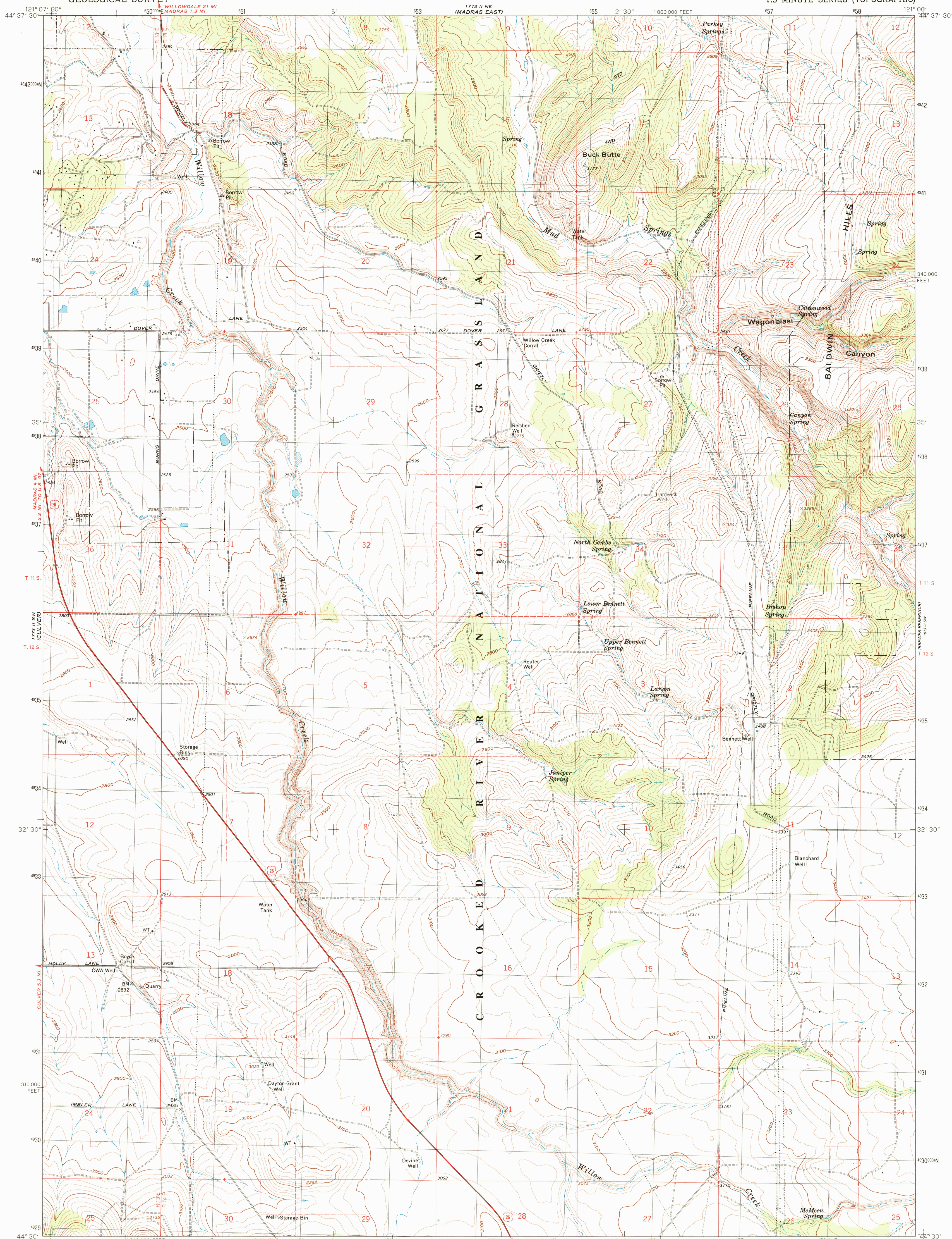


UNITED STATES
DEPARTMENT OF THE INTERIOR
GEOLOGICAL SURVEY

BUCK BUTTE QUADRANGLE
OREGON-JEFFERSON CO.
7.5 MINUTE SERIES (TOPOGRAPHIC)



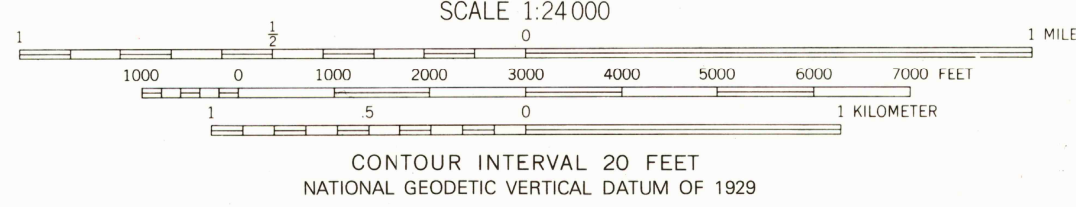
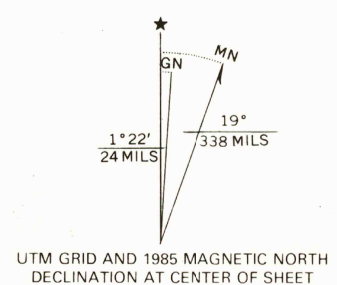
Maped, edited, and published by the Geological Survey
Revised in cooperation with U.S. Forest Service

Control by USGS and NOS/NOAA

Topography by photogrammetric methods from aerial
photographs taken 1957. Field checked 1963
Revised from aerial photographs taken 1982
Limited field check 1985. Map edited 1985

Projection and 10,000-foot grid ticks: Oregon coordinate
system, north zones (Lambert conformal conic)
1000-meter Universal Transverse Mercator grid, zone 10
1927 North American Datum

To place on the predicted North American Datum 1983
move the projection lines 21 meters north and
91 meters east as shown by dashed corner ticks.
There may be private inholdings within the boundaries of
the National or State reservations shown on this map



ROAD CLASSIFICATION
Heavy-duty ——— Light-duty ———
Medium-duty ——— Unimproved dirt ———
U.S. Route

BUCK BUTTE, OREG.
44121-E1-TF-024

1985

DMA 1773 II SE—SERIES V892

THIS MAP COMPLIES WITH NATIONAL MAP ACCURACY STANDARDS
FOR SALE BY U.S. GEOLOGICAL SURVEY, DENVER, COLORADO 80225, OR RESTON, VIRGINIA 22092
A FOLDER DESCRIBING TOPOGRAPHIC MAPS AND SYMBOLS IS AVAILABLE ON REQUEST

1982 IV
REVISED
1982 IV
REVISED

