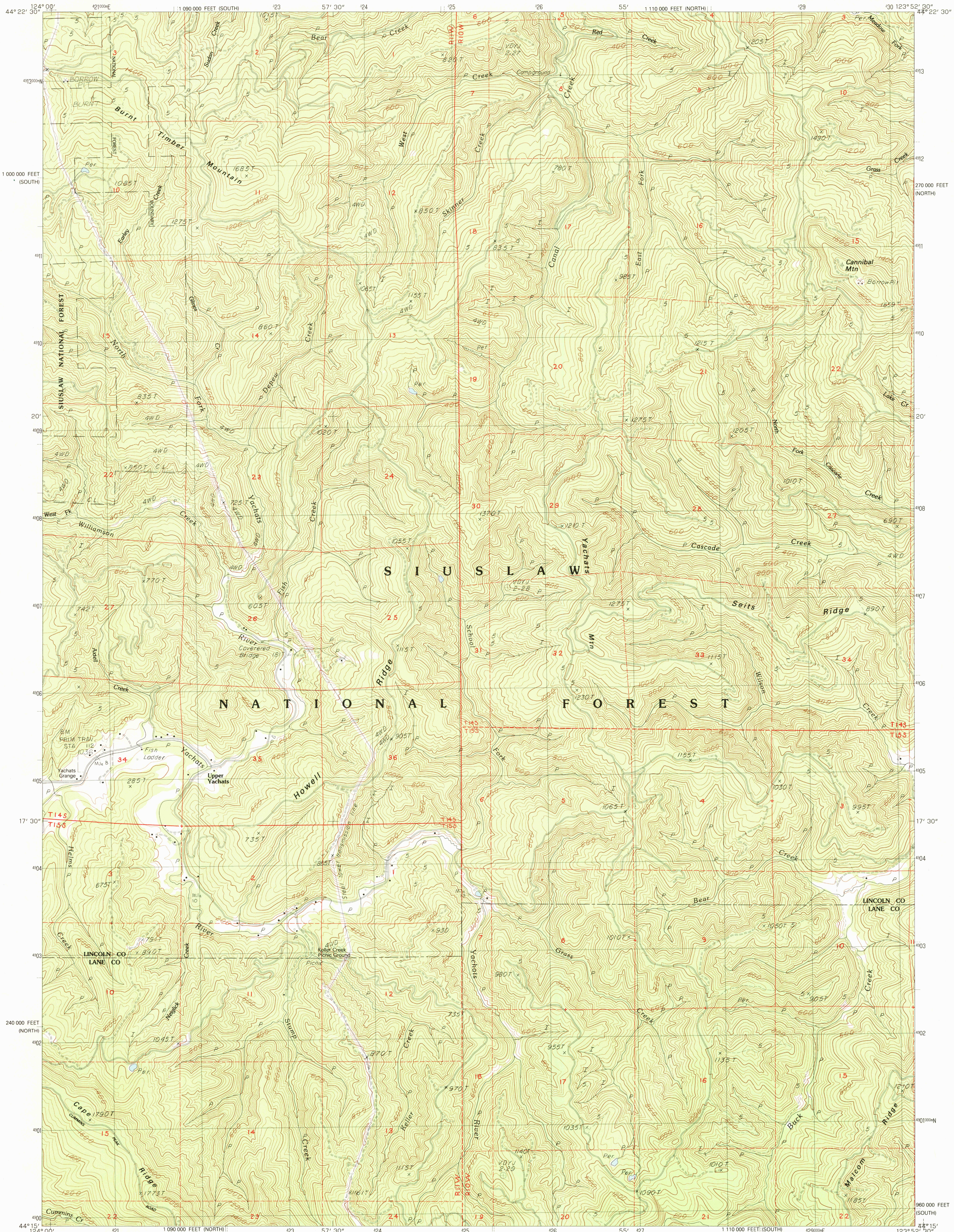


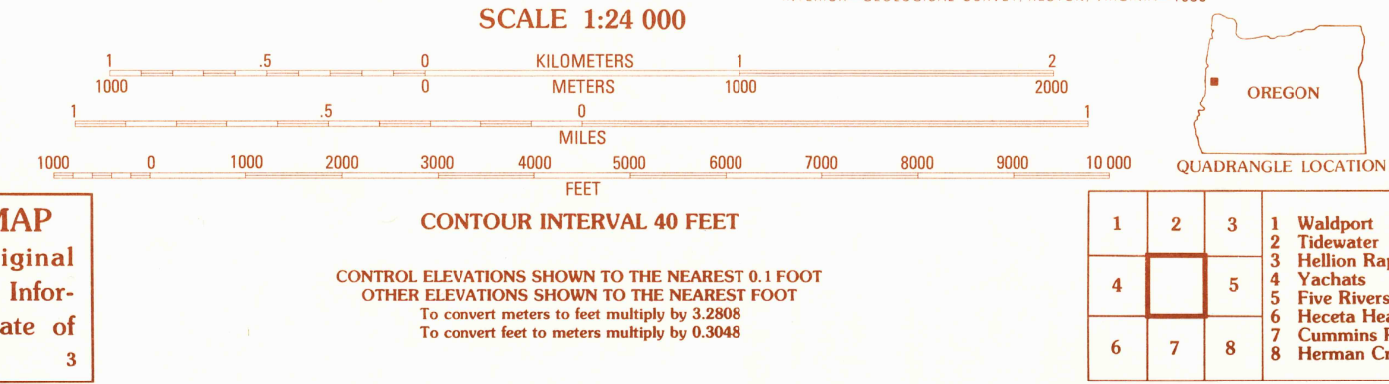
UNITED STATES  
DEPARTMENT OF THE INTERIOR  
GEOLOGICAL SURVEY

CANNIBAL MTN. QUADRANGLE  
OREGON  
7.5 MINUTE SERIES (TOPOGRAPHIC)



PRODUCED BY THE UNITED STATES GEOLOGICAL SURVEY  
CONTROL BY ..... USGS, NOS/NOAA  
COMPILED FROM AERIAL PHOTOGRAPHS TAKEN ..... 1975-76  
FIELD CHECKED ..... 1979. MAP EDITED ..... 1984  
PROJECTION ..... LAMBERT CONFORMAL CONIC  
GRID: 1000-METER UNIVERSAL TRANSVERSE MERCATOR ZONE 10  
10,000-FOOT STATE GRID TICS ..... OREGON, NORTH AND SOUTH ZONES  
UTM GRID DECLINATION ..... 079° WEST  
1980 MAGNETIC NORTH DECLINATION ..... 19°30' EAST  
VERTICAL DATUM ..... NATIONAL GEODETIC VERTICAL DATUM OF 1929  
HORIZONTAL DATUM ..... 1927 NORTH AMERICAN DATUM  
To place on the predated North American Datum of 1983,  
move the projection lines as shown by dashed corner ticks  
(23 meters north / 97 meters east)  
There may be private inholdings within the boundaries of any  
Federal and State Reservations shown on this map

**PROVISIONAL MAP**  
Produced from original  
manuscript drawings. Informa-  
tion shown as of date of  
field check.



**ROAD LEGEND**  
Improved Road .....  
Unimproved Road .....  
Trail .....  
Interstate Route ..... U.S. Route ..... State Route .....  
**CANNIBAL MTN., OREG.**  
**PROVISIONAL EDITION 1984**