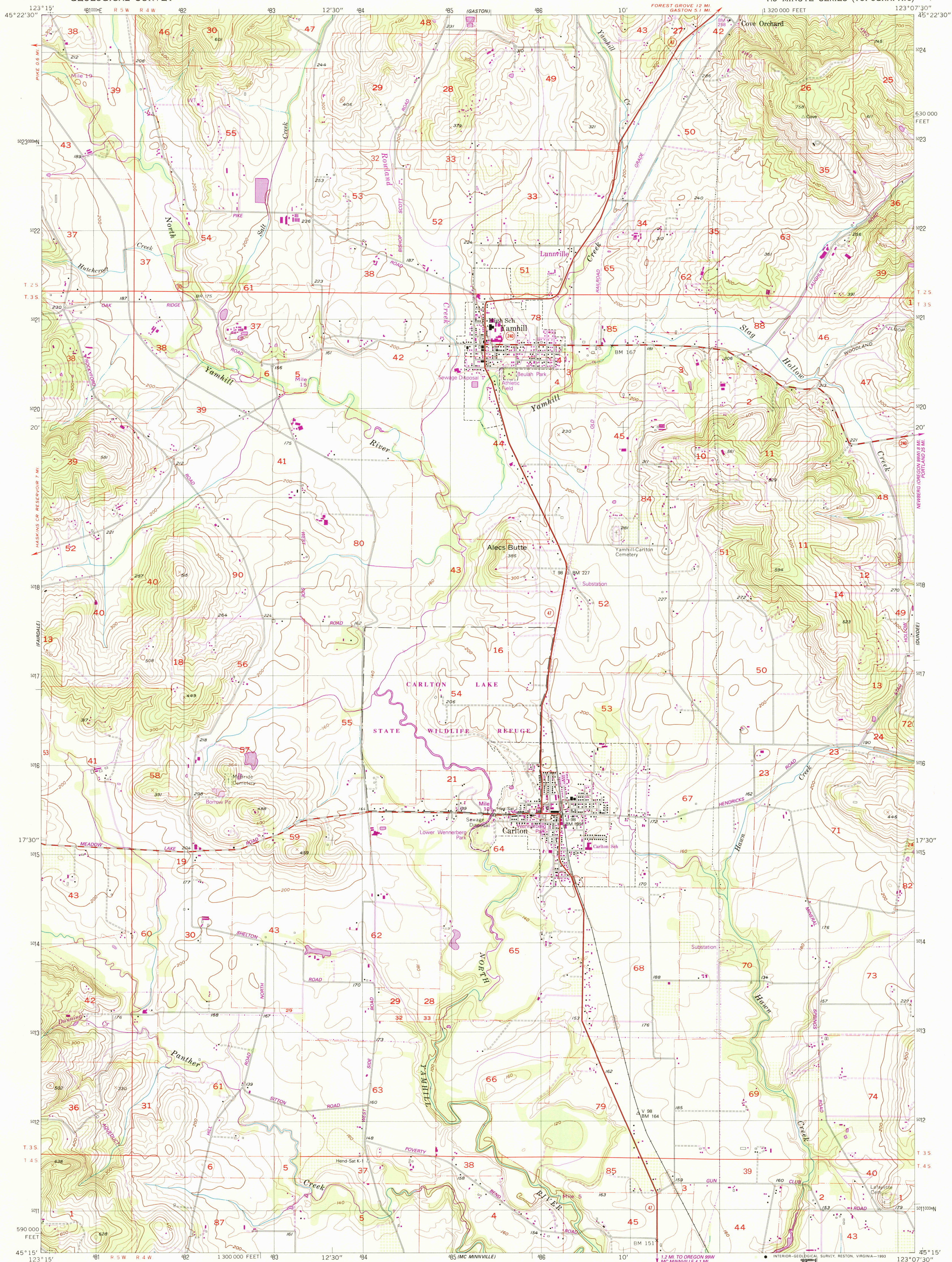
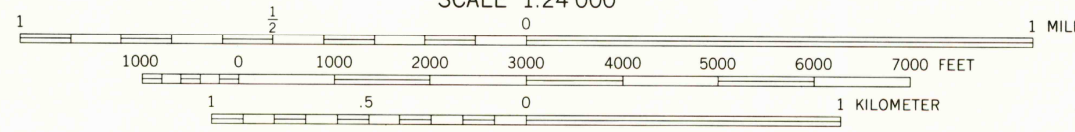
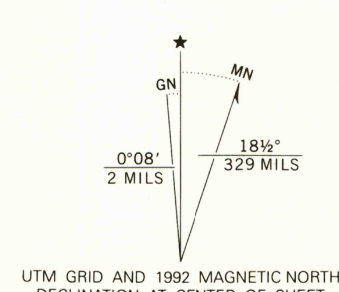


UNITED STATES
DEPARTMENT OF THE INTERIOR
GEOLOGICAL SURVEY

CARLTON QUADRANGLE
OREGON-YAMHILL CO.
7.5 MINUTE SERIES (TOPOGRAPHIC)



Produced by the United States Geological Survey
Control by USGS, NOS/NOAA, and OSHD
Compiled from aerial photographs taken 1954. Information shown in purple has been updated from aerial photographs taken 1967 and field checked. Map edited 1992. Conflicts may exist between some updated features and previously mapped contours.
North American Datum of 1927 (NAD 27). Projection and 10 000-foot grid ticks. Oregon Coordinate System, north zone (Lambert Conformal Conic). 1000-meter Universal Transverse Mercator grid, zone 10.
The difference between NAD 27 and North American Datum of 1983 (NAD 83) for 7.5 minute intersections is given in USGS Bulletin 1875. The NAD 83 is shown by dashed corner ticks.
There may be private inholdings within the boundaries of the National or State reservations shown on this map.



CONTOUR INTERVAL 20 FEET
NATIONAL GEODETIC VERTICAL DATUM OF 1929



ROAD CLASSIFICATION
Primary highway, hard surface
Secondary highway, hard surface
Light-duty road, hard or improved surface
Unimproved road
Interstate Route
U. S. Route
State Route

CARLTON, OREG.
45123-C2-TF-024

1957
REVISED 1992
DMA 1374 1 SW-SERIES V892



THIS MAP COMPLIES WITH NATIONAL MAP ACCURACY STANDARDS
FOR SALE BY U. S. GEOLOGICAL SURVEY, DENVER, COLORADO 80225, OR RESTON, VIRGINIA 22092
A FOLDER DESCRIBING TOPOGRAPHIC MAPS AND SYMBOLS IS AVAILABLE ON REQUEST