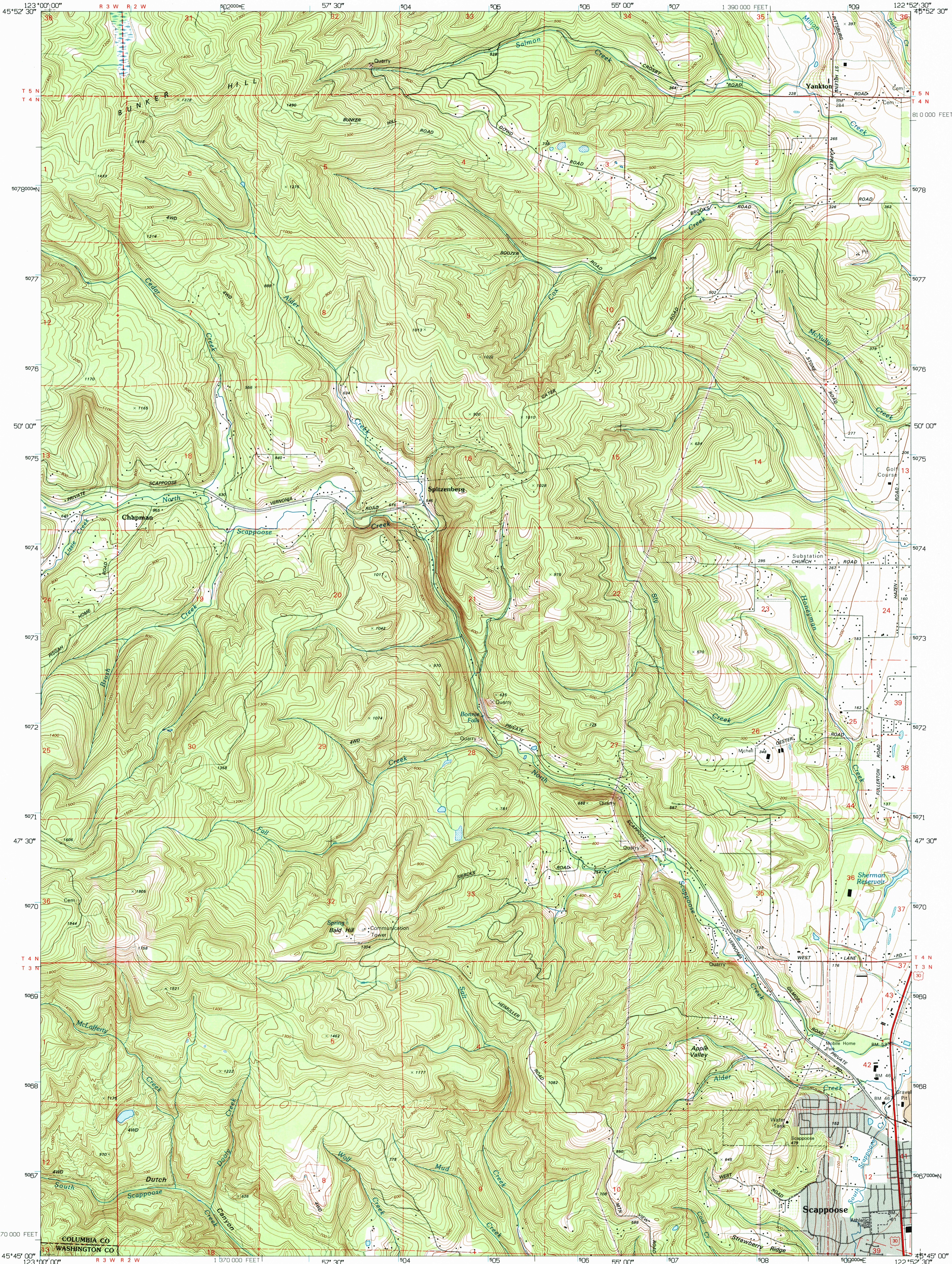
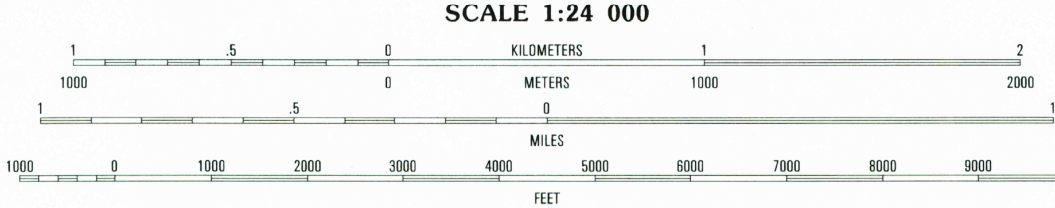
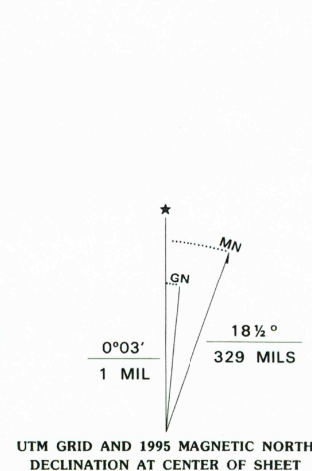


UNITED STATES
DEPARTMENT OF THE INTERIOR
GEOLOGICAL SURVEY

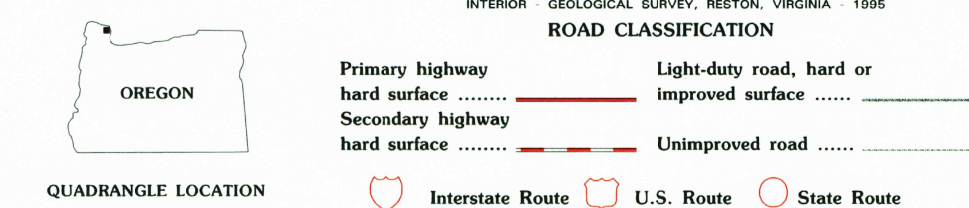
CHAPMAN QUADRANGLE
OREGON
7.5-MINUTE SERIES (TOPOGRAPHIC)



Produced by the United States Geological Survey
Control by USGS and NOS/NOAA
Compiled from imagery dated 1953 and 1970. Revised from
imagery dated 1990. PLS and survey control
current as of 1971. Map edited 1995. Contours and land
elevations have not been revised and may conflict with other content
North American Datum of 1927 (NAD 27). Projection and
blue 1000-meter ticks: Universal Transverse Mercator, zone 10
10 000-foot ticks: Oregon Coordinate System, north zone
North American Datum of 1983 (NAD 83) is shown by dashed
corner ticks. The values of the shift between NAD 27
and NAD 83 for 7.5-minute intersections are obtainable from
National Geodetic Survey NADCON software
Fine red dashed lines indicate selected fence and field lines where
generally visible on aerial photographs. This information is unchecked



CONTOUR INTERVAL 20 FEET
NATIONAL GEODETIC VERTICAL DATUM OF 1929
TO CONVERT FEET TO METERS MULTIPLY BY 0.3048
TO CONVERT METERS TO FEET MULTIPLY BY 3.2808
COMPLIES WITH U.S. GEOLOGICAL SURVEY STANDARDS FOR SPATIAL ACCURACY (HORIZONTAL), CLASS 1
DOES NOT MEET U.S. GEOLOGICAL SURVEY STANDARDS FOR SPATIAL ACCURACY (VERTICAL)
FOR SALE BY U.S. GEOLOGICAL SURVEY
DENVER, COLORADO 80225, OR RESTON, VIRGINIA 22092
A FOLDER DESCRIBING TOPOGRAPHIC MAPS AND SYMBOLS IS AVAILABLE ON REQUEST



QUADRANGLE LOCATION
OREGON
CHAPMAN, OR
45122-G8-TF-024
1990
DMA 1475 IV SW-SERIES V892

