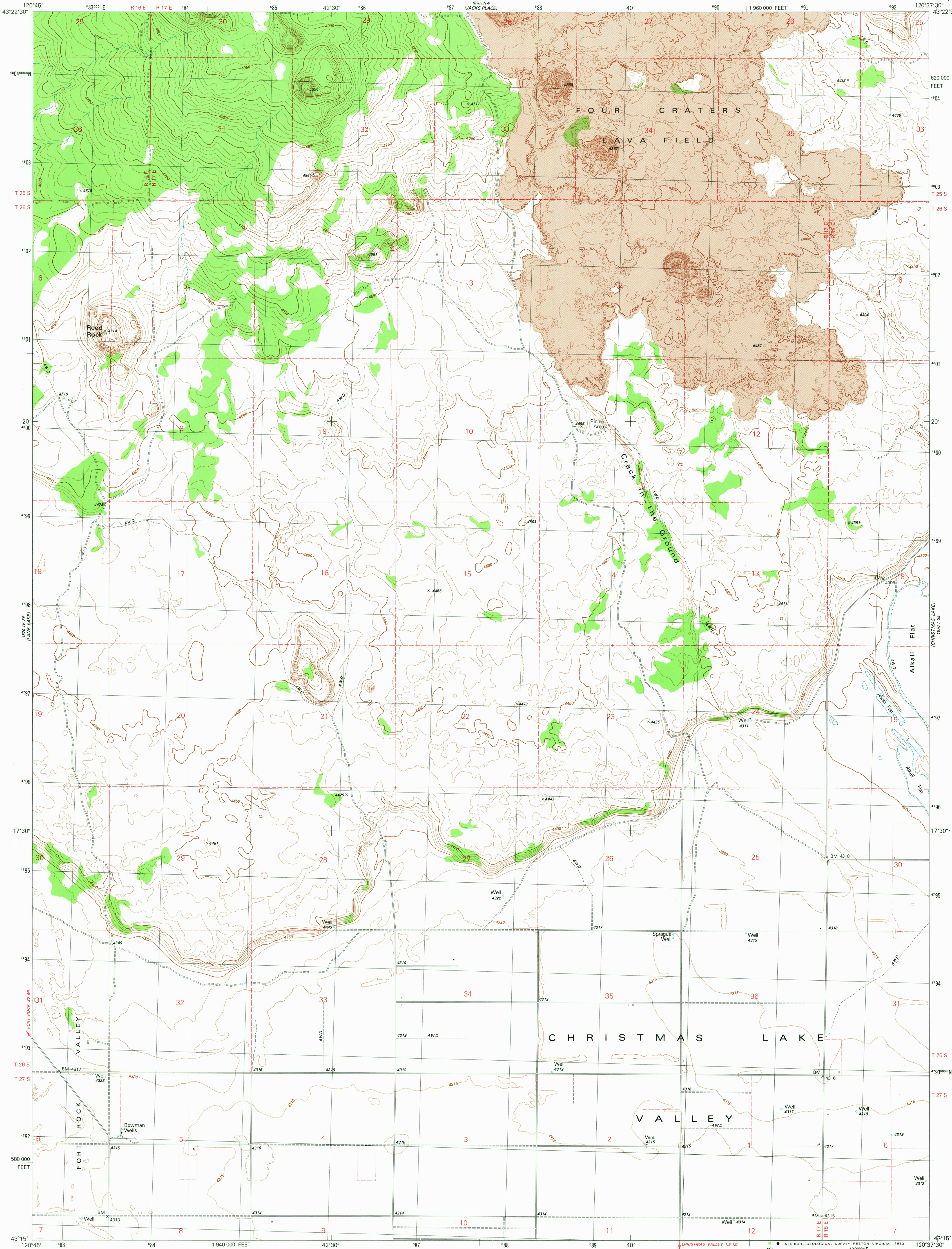


UNITED STATES  
DEPARTMENT OF THE INTERIOR  
GEOLOGICAL SURVEY

CRACK-IN-THE-GROUND QUADRANGLE  
OREGON-LAKE CO.  
7.5 MINUTE SERIES (TOPOGRAPHIC)



Mapped, edited, and published by the Geological Survey

Control by USGS and NOS/NOAA

Topography by photogrammetric methods from aerial photographs taken 1976. Field checked 1978

Map edited 1983

Projection and 10,000-foot grid ticks: Oregon coordinate system, south zone (Lambert conformal conic)

1000-meter Universal Transverse Mercator grid, zone 10

1927 North American Datum

To place on the predicted North American Datum 1983

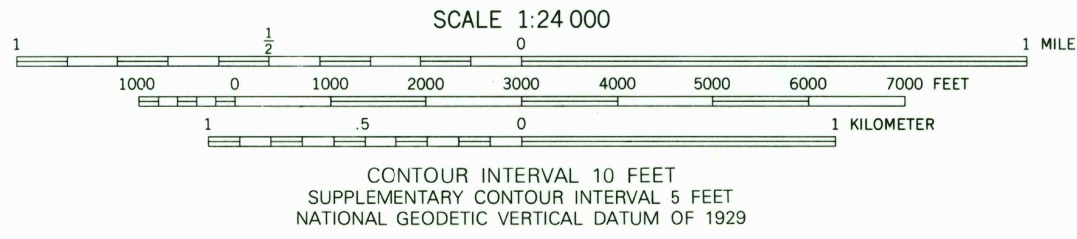
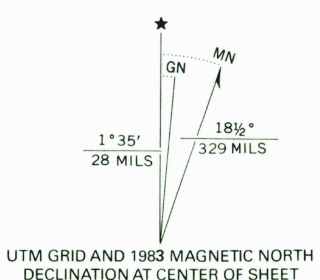
move the projection lines 19 meters north and

90 meters east as shown by dashed corner ticks

Fine red dashed lines indicate selected fence and field lines

where generally visible on aerial photographs

This information is uncorrected



ROAD CLASSIFICATION	
Primary highway, hard surface	Light-duty road, hard or improved surface
Secondary highway, hard surface	Unimproved road
Interstate Route	U. S. Route
	State Route

CRACK-IN-THE-GROUND, OREG.  
N4315-W12037.5/7.5

1983

DMA 1870 I SW-SERIES V892

THIS MAP COMPLIES WITH NATIONAL MAP ACCURACY STANDARDS  
FOR SALE BY U. S. GEOLOGICAL SURVEY, DENVER, COLORADO 80225, OR RESTON, VIRGINIA 22092  
A FOLDER DESCRIBING TOPOGRAPHIC MAPS AND SYMBOLS IS AVAILABLE ON REQUEST

RETURN TO:  
USGS AND HISTORICAL MAP ARCHIVES