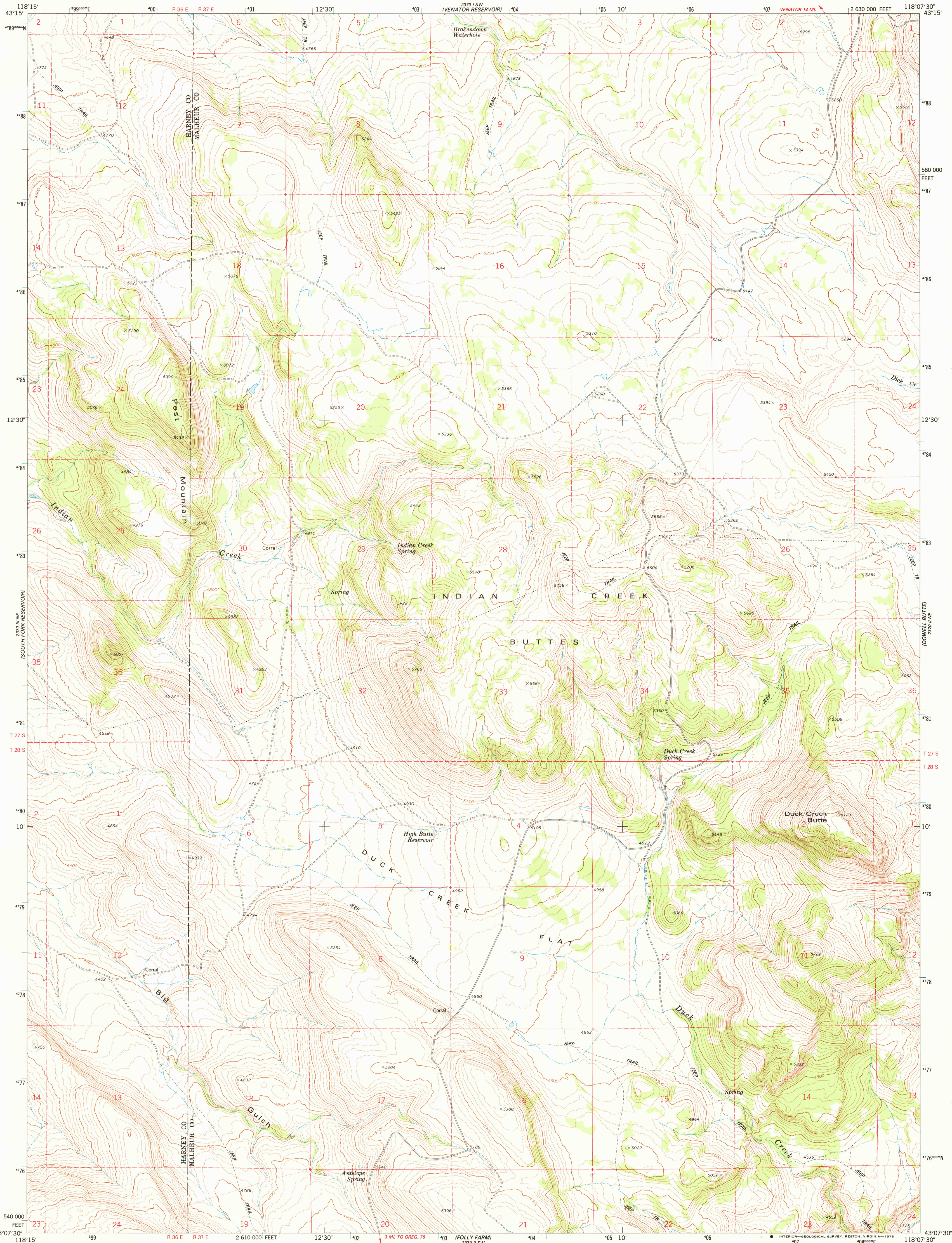


UNITED STATES  
DEPARTMENT OF THE INTERIOR  
GEOLOGICAL SURVEY

DUCK CREEK BUTTE QUADRANGLE  
OREGON  
7.5 MINUTE SERIES (TOPOGRAPHIC)

NW¼ FOLLY FARM 15' QUADRANGLE

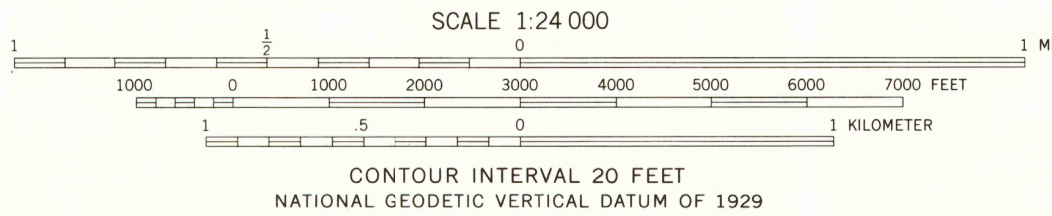
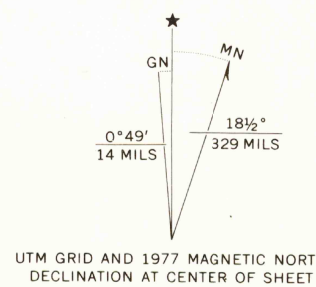
2370 15' E  
580 000 FEET  
43° 07' 30" N



Mapped, edited, and published by the Geological Survey  
Control by USGS and NOS/NOAA

Topography by photogrammetric methods from aerial  
photographs taken 1973. Field checked 1974  
Projection and 10,000-foot grid ticks: Oregon coordinate  
system, south zone (Lambert conformal conic)  
1000-meter Universal Transverse Mercator grid ticks,  
zone 11, shown in blue. 1927 North American datum

Fine red dashed lines indicate selected fence and field lines where  
generally visible on aerial photographs.  
This information is unchecked



ROAD CLASSIFICATION  
Primary highway, hard surface ———— Improved surface  
Secondary highway, hard surface ———— Unimproved road  
Interstate Route U.S. Route State Route

USGS  
Historical File  
Topographic Division

DUCK CREEK BUTTE, OREG.  
NW¼ FOLLY FARM 15' QUADRANGLE  
N4307.5—W11807.5/7.5

1977

AMS 2370 II NW—SERIES V892

THIS MAP COMPLIES WITH NATIONAL MAP ACCURACY STANDARDS  
FOR SALE BY U.S. GEOLOGICAL SURVEY, DENVER, COLORADO 80225, OR RESTON, VIRGINIA 22092  
A FOLDER DESCRIBING TOPOGRAPHIC MAPS AND SYMBOLS IS AVAILABLE ON REQUEST

JUL 25 1978

3400