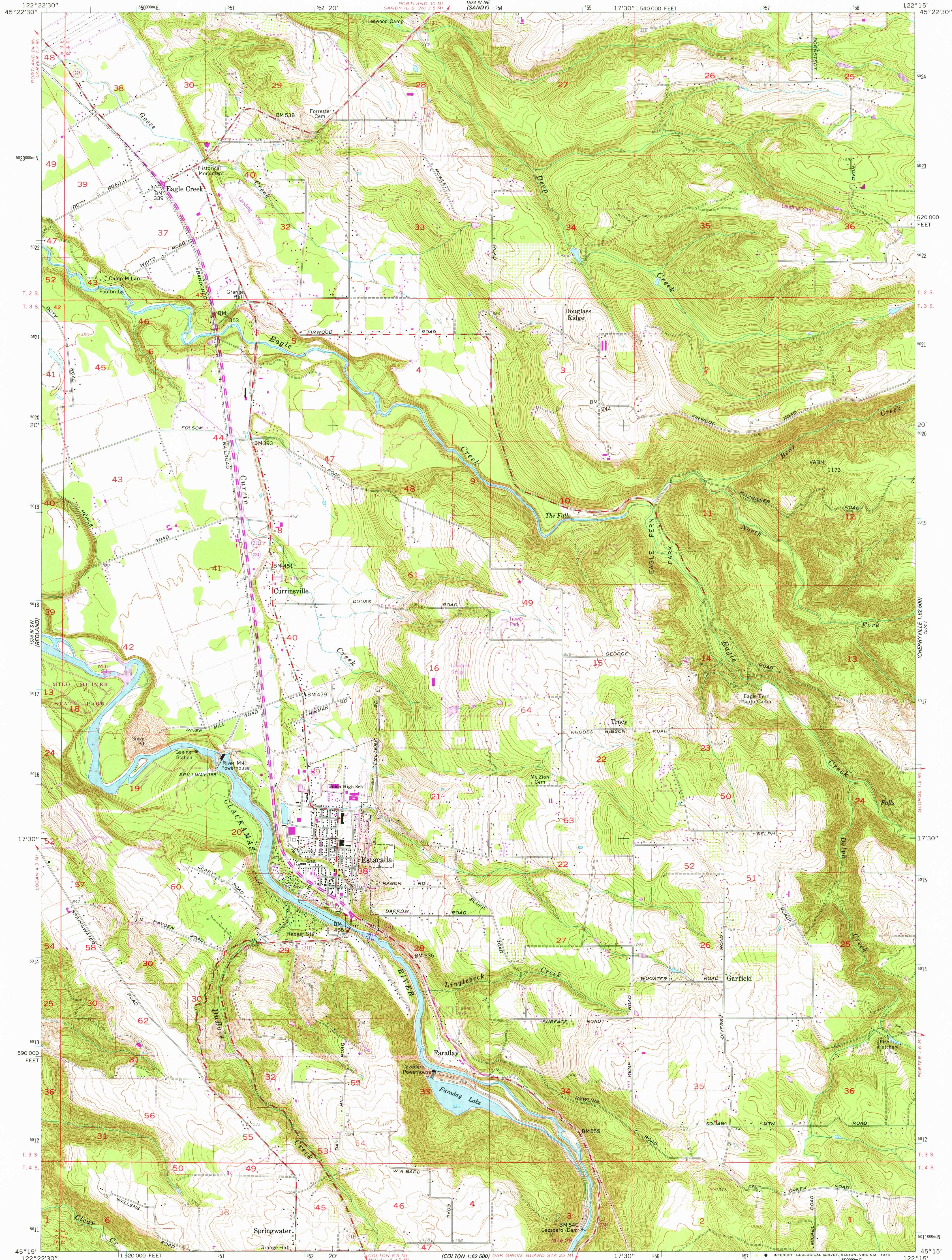


1574 IV NW
(DAMASCUS)

UNITED STATES
DEPARTMENT OF THE INTERIOR
GEOLOGICAL SURVEY

ESTACADA QUADRANGLE
OREGON—CLACKAMAS CO.
7.5 MINUTE SERIES (TOPOGRAPHIC)
SE/4 SANDY 15' QUADRANGLE

1574 I
(CHERRYVILLE
1:62,500)



Mapped, edited, and published by the Geological Survey

Control by USGS, NOS/NOAA, and State of Oregon

Topography from aerial photographs by photogrammetric methods

Aerial photographs taken 1952. Field check 1954

Revised from aerial photographs taken 1960. Field check 1961

Polyconic projection. 1927 North American datum

10,000-foot grid based on Oregon coordinate system, north zone

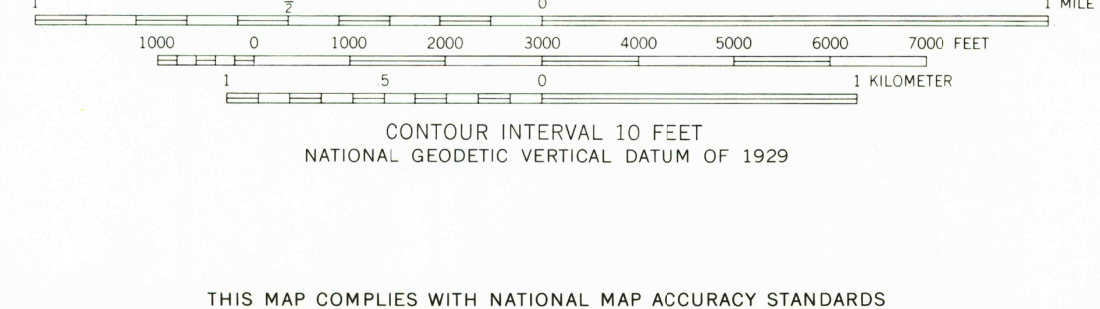
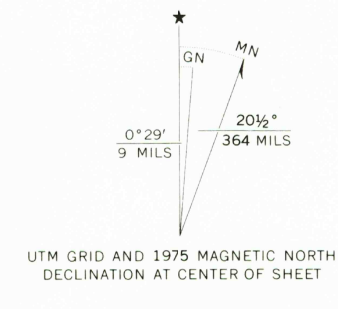
1000-meter Universal Transverse Mercator grid ticks, zone 10,

shown in blue

Fine red dashed lines indicate selected fence lines

Revisions shown in purple compiled from aerial photographs

taken 1970 and 1975. This information not field checked



ROAD CLASSIFICATION	
Primary highway, hard surface	Light-duty road, hard or improved surface
Secondary highway, hard surface	Unimproved road
Interstate Route	U.S. Route
	State Route

USGS
Historical File
Topographic Division

ESTACADA, OREG.
SE/4 SANDY 15' QUADRANGLE
N4515-W12215/7.5

1961
PHOTOREVISED 1970 AND 1975
AMS 1574 IV SE-SERIES V892

JUL 28 1978

THIS MAP COMPLIES WITH NATIONAL MAP ACCURACY STANDARDS

FOR SALE BY U.S. GEOLOGICAL SURVEY, DENVER, COLORADO 80225, OR RESTON, VIRGINIA 22092

A FOLDER DESCRIBING TOPOGRAPHIC MAPS AND SYMBOLS IS AVAILABLE ON REQUEST