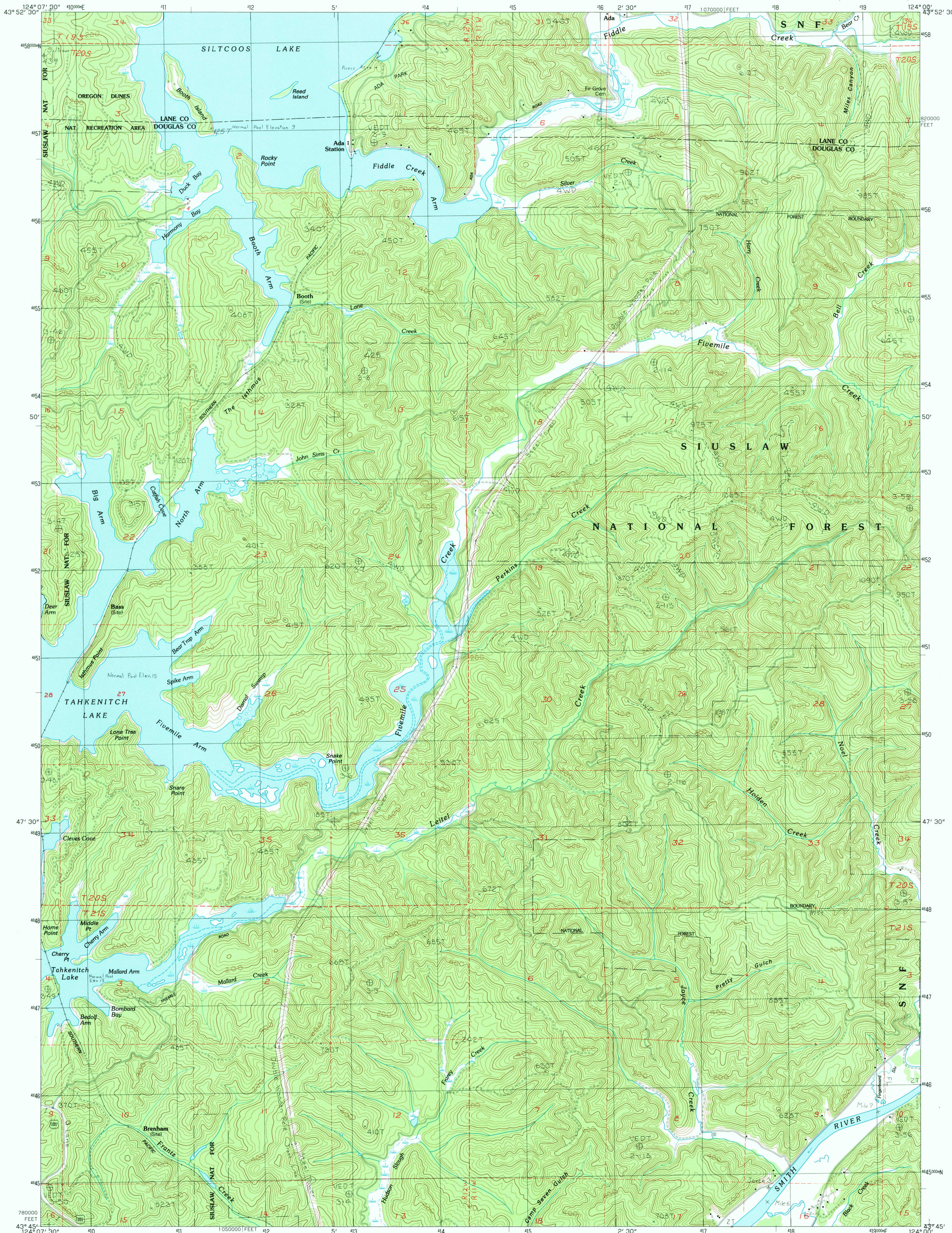


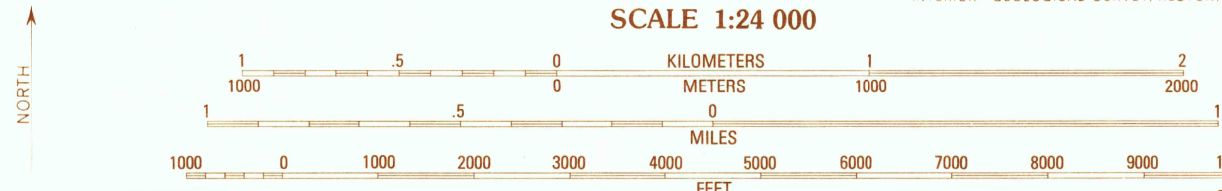
UNITED STATES
DEPARTMENT OF THE INTERIOR
GEOLOGICAL SURVEY

FIVEMILE CREEK QUADRANGLE
OREGON
7.5 MINUTE SERIES (TOPOGRAPHIC)



PRODUCED BY THE UNITED STATES GEOLOGICAL SURVEY
CONTROL BYUSGS, NOS/NOAA
COMPILED FROM AERIAL PHOTOGRAPHS TAKEN1975-76
FIELD CHECKED1978. MAP EDITED1984
PROJECTIONLAMBERT CONFORMAL CONIC
GRID: 1000-METER UNIVERSAL TRANSVERSE MERCATOR, ZONE 10
10,000-FOOT STATE GRID TICSOREGON, SOUTH ZONE
UTM GRID DECLINATION0°04' WEST
1980 MAGNETIC NORTH DECLINATION19° EAST
HORIZONTAL DATUMNATIONAL GEODETIC VERTICAL DATUM OF 1929
To place on the predicted North American Datum of 1983,
move the projection lines as shown by dashed corner ticks
(23 meters north / 98 meters east)
There may be private inholdings within the boundaries of any
Federal and State Reservations shown on this map

PROVISIONAL MAP
Produced from original
manuscript drawings. Infor-
mation shown as of date of
field check.



1	2	3	4	5	6	7	8
1	2	3	4	5	6	7	8

ROAD LEGEND
Improved Road.....
Unimproved Road.....
Trail.....
Interstate Route.....
U.S. Route.....
State Route.....

FIVEMILE CREEK, OREG.
PROVISIONAL EDITION 1984