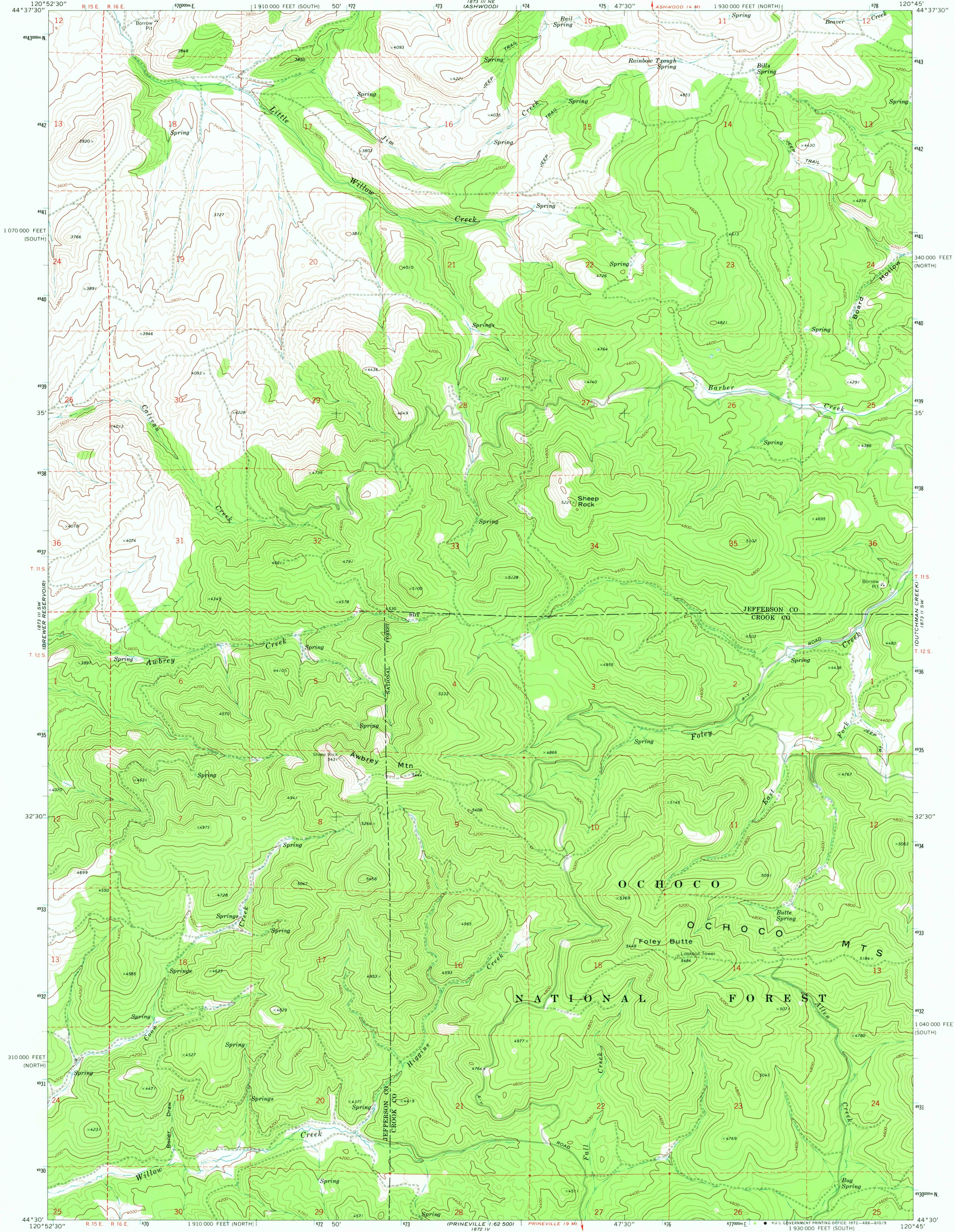
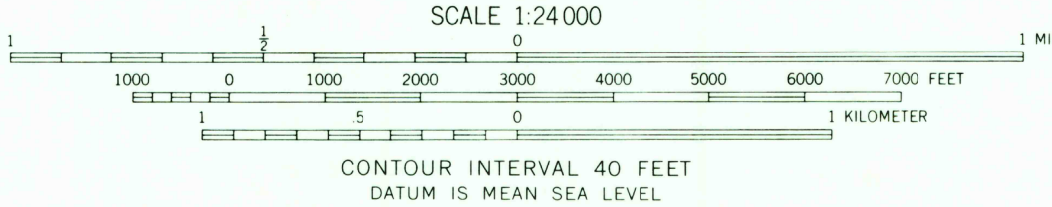
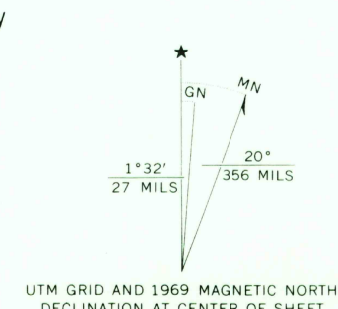


UNITED STATES  
DEPARTMENT OF THE INTERIOR  
GEOLOGICAL SURVEY

FOLEY BUTTE QUADRANGLE  
OREGON  
7.5 MINUTE SERIES (TOPOGRAPHIC)



Mapped, edited, and published by the Geological Survey  
Control by USGS and USC&GS  
Topography by photogrammetric methods from aerial  
photographs taken 1967. Field checked 1969  
Polyconic projection. 1927 North American datum  
10,000-foot grids based on Oregon coordinate system,  
north and south zones  
1000-meter Universal Transverse Mercator grid ticks,  
zone 10, shown in blue  
Fine red dashed lines indicate selected fence lines



ROAD CLASSIFICATION  
Primary highway, hard surface ————  
Secondary highway, hard surface ————  
Unimproved road ————  
Interstate Route ————  
U. S. Route ————  
State Route ————

FOLEY BUTTE, OREG.  
N4430—W12045/7.5

1969

AMS 1873 III SE—SERIES V892

THIS MAP COMPLIES WITH NATIONAL MAP ACCURACY STANDARDS  
FOR SALE BY U. S. GEOLOGICAL SURVEY, DENVER, COLORADO 80225, OR WASHINGTON, D. C. 20242  
A FOLDER DESCRIBING TOPOGRAPHIC MAPS AND SYMBOLS IS AVAILABLE ON REQUEST

USGS  
HISTORICAL FILE  
TOPOGRAPHIC DIVISION

W44  
250m

FEB 27 1973