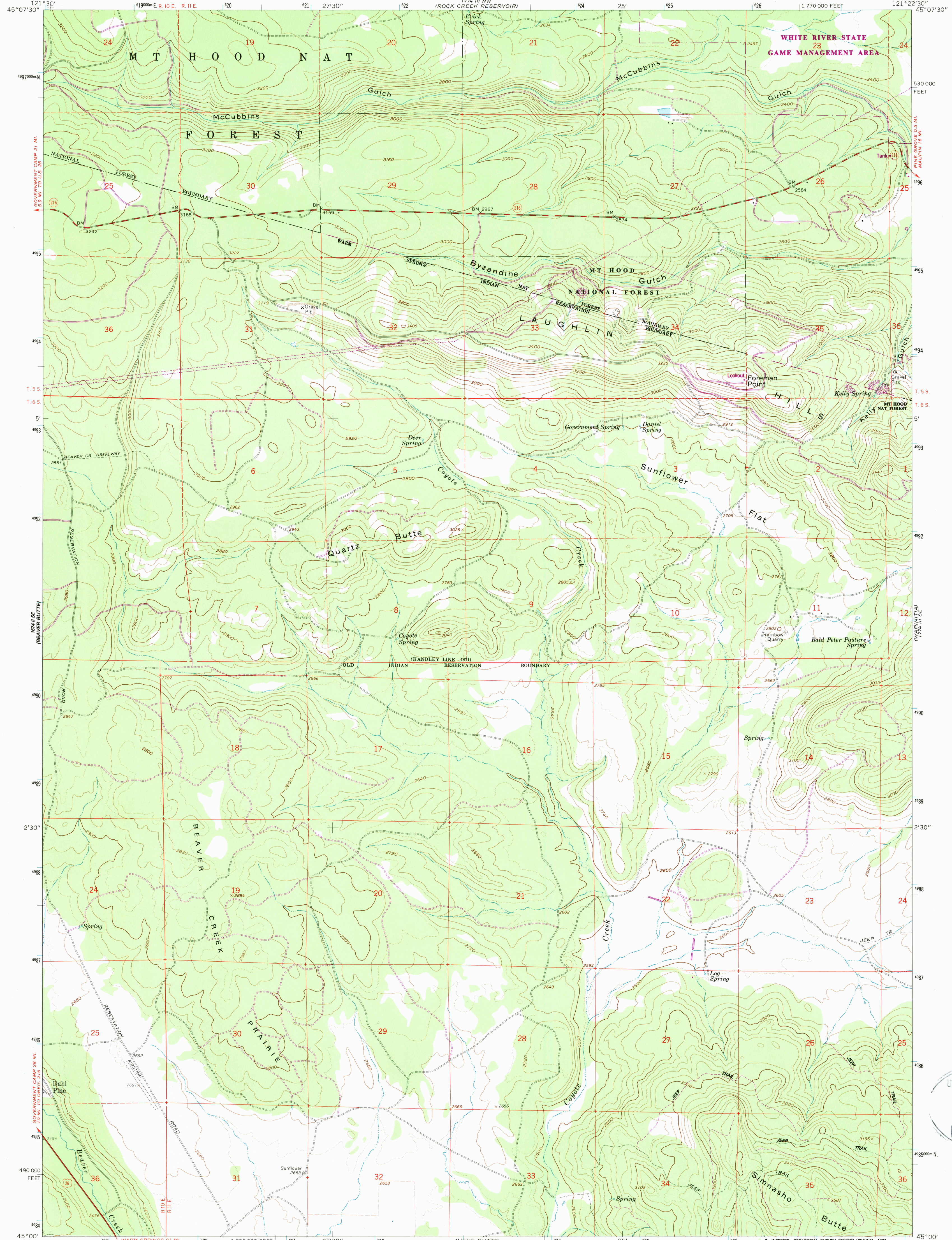


121°30' 45°07'30"

UNITED STATES
DEPARTMENT OF THE INTERIOR
GEOLOGICAL SURVEY

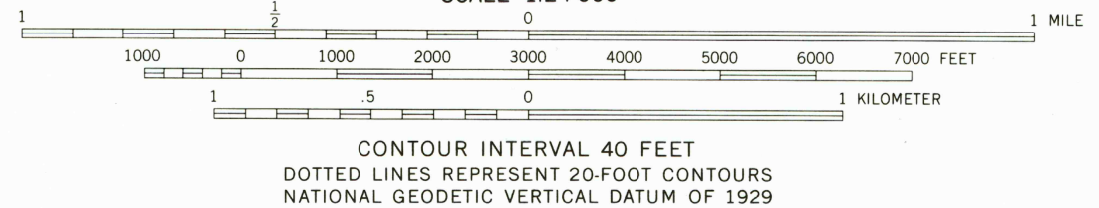
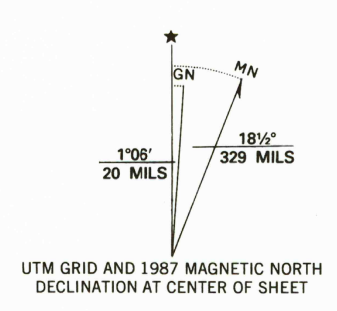
FOREMAN POINT QUADRANGLE
OREGON—WASCO CO.
7.5 MINUTE SERIES (TOPOGRAPHIC)

121°22'30" 45°07'30"



121°30' 45°00'

Mapped, edited, and published by the Geological Survey
Control by USGS and USC&GS
Topography by photogrammetric methods from aerial
photographs taken 1957. Field checked 1962
Polyconic projection. 1927 North American datum
10,000-foot grid based on Oregon coordinate system, north zone
1000-meter Universal Transverse Mercator grid ticks,
zone 10, shown in blue
To place on the predicted North American Datum 1983
move the projection lines 21 meters north and
92 meters east as shown by dashed corner ticks
Where omitted, land lines have not been established
Fine red dashed lines indicate selected fence lines
There may be private inholdings within the boundaries of
the National or State reservations shown on this map



ROAD CLASSIFICATION	
Heavy-duty	Light-duty
Medium-duty	Unimproved dirt
U.S. Route	State Route

FOREMAN POINT, OREG.
45121-A4-TF-024

1962
PHOTOREVISED 1987
DMA 1774 III SW—SERIES V892

THIS MAP COMPLIES WITH NATIONAL MAP ACCURACY STANDARDS
FOR SALE BY U. S. GEOLOGICAL SURVEY, DENVER, COLORADO 80225, OR RESTON, VIRGINIA 22092
A FOLDER DESCRIBING TOPOGRAPHIC MAPS AND SYMBOLS IS AVAILABLE ON REQUEST

Revisions shown in purple compiled from aerial
photographs taken 1981 and other sources
This information not field checked. Map edited 1987

USGS HISTORICAL MAP
JUN 09 1988
REC'D FILE COPY