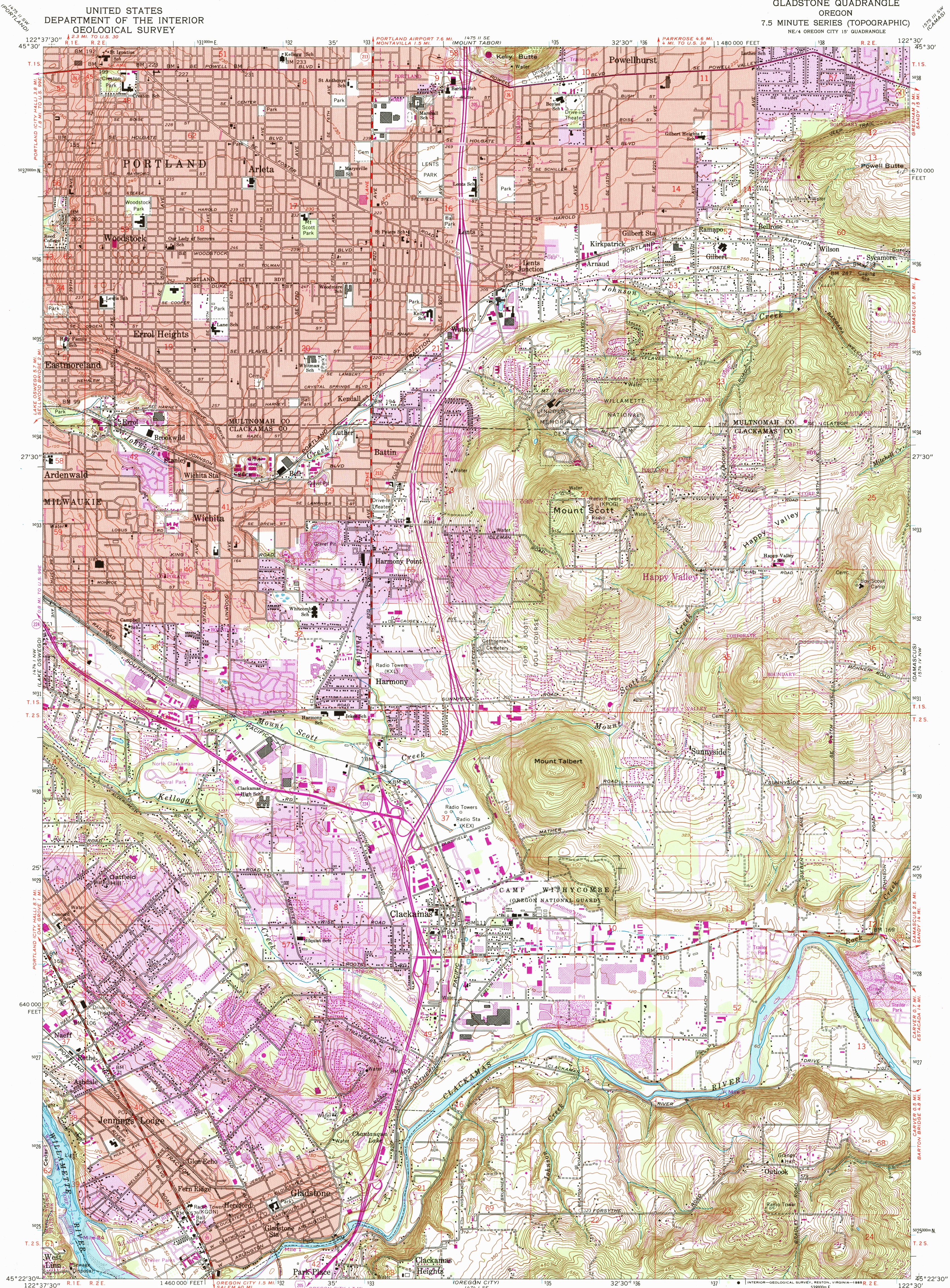


UNITED STATES
DEPARTMENT OF THE INTERIOR
GEOLOGICAL SURVEY

GLADSTONE QUADRANGLE
OREGON
7.5 MINUTE SERIES (TOPOGRAPHIC)
NE/4 OREGON CITY 15' QUADRANGLE



Mapped, edited, and published by the Geological Survey

Control by USGS, NOS/NOAA, USCE, and State of Oregon

Topography by photogrammetric methods from aerial

photographs taken 1952. Field checked 1954

Revised from aerial photographs taken 1960. Field checked 1961

Selected hydrographic data compiled from NOS/NOAA Chart 6171 (1958)

This information is not intended for navigational purposes

Projection and 10,000-foot grid ticks: Oregon coordinate

system, north zone (Lambert conformal conic)

1000-meter Universal Transverse Mercator grid ticks,

zone 10, shown in blue. 1927 North American datum

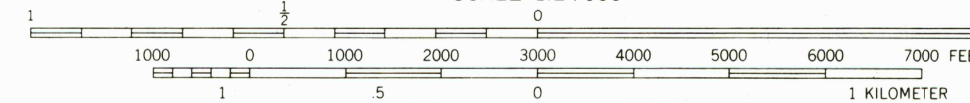
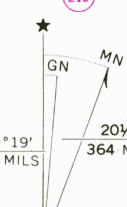
To place on the predicted North American Datum 1983

move the projection lines 22 meters north and

94 meters east as shown by dashed corner ticks

Red tint indicates areas in which only landmark buildings are shown

Fine red dashed lines indicate selected fence lines



CONTOUR INTERVAL 10 FEET
NATIONAL GEODETIC VERTICAL DATUM OF 1929
DEPTH CURVES AND SOUNDINGS IN FEET—COLUMBIA RIVER DATUM
SHORELINE SHOWN REPRESENTS THE APPROXIMATE LINE OF MEAN HIGH WATER
THE MEAN RANGE OF TIDE IS APPROXIMATELY 2 FEET



ROAD CLASSIFICATION
Heavy-duty ——— Light-duty ———
Medium-duty ——— Unimproved dirt ———
U.S. Route ——— State Route ———
Interstate Route ———

GLADSTONE, OREG.
NE/4 OREGON CITY 15' QUADRANGLE
N4522.5—W12230/7.5

1961
PHOTOREVISED 1984
DMA 1474 I NE—SERIES V892

