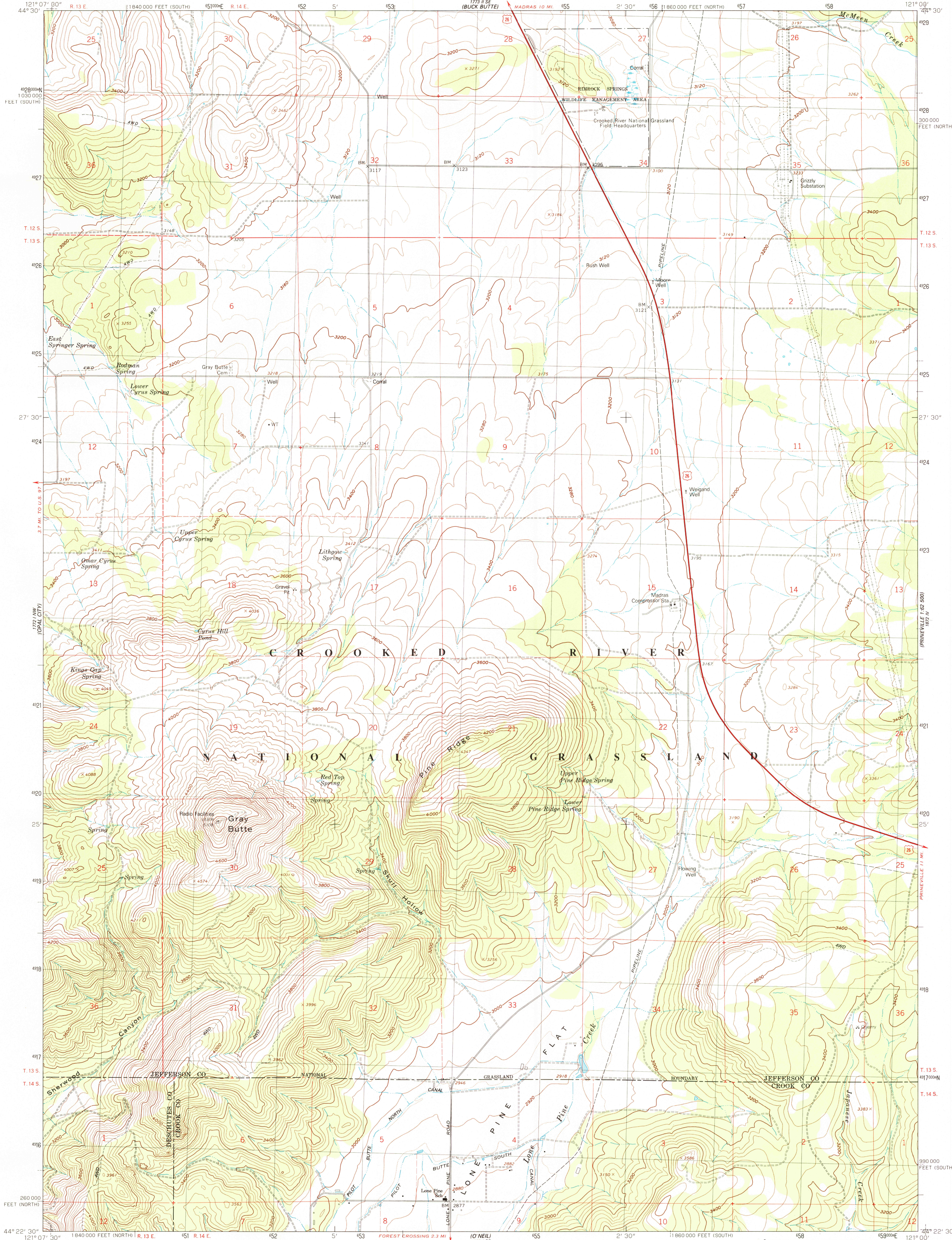


1721 1/2 SW
(CULVER)

UNITED STATES
DEPARTMENT OF THE INTERIOR
GEOLOGICAL SURVEY

GRAY BUTTE QUADRANGLE
OREGON
7.5 MINUTE SERIES (TOPOGRAPHIC)

1721 1/2 SW
(BREWSTER)

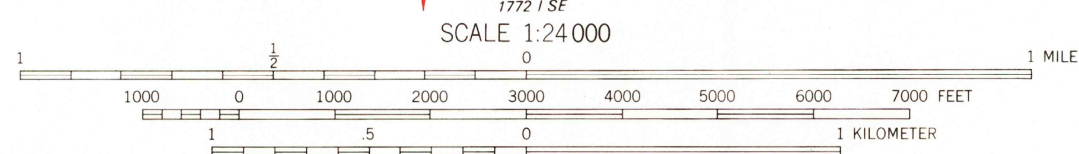
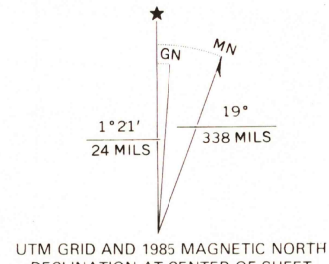


Mapped, edited, and published by the Geological Survey
Revised in cooperation with U.S. Forest Service

Control by USGS and NOS/NOAA

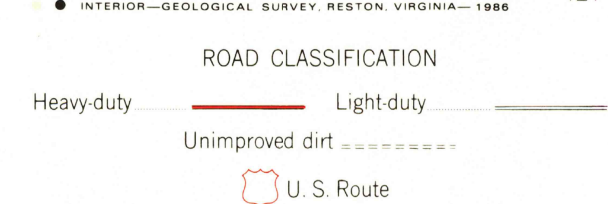
Topography by photogrammetric methods from aerial
photographs taken 1957. Field checked 1962
Revised from aerial photographs taken 1982. Limited
field check 1985. Map edited 1985

Projection and 10,000-foot grid ticks: Oregon coordinate
system, north zone and south zone (Lambert conformal conic)
1000-meter Universal Transverse Mercator grid, zone 10
1927 North American datum. To place on the predicted
North American Datum 1983 move the projection lines 21
meters north and 91 meters east as shown by dashed corner ticks
There may be private inholdings within the boundaries of
the National or State reservations shown on this map



NATIONAL GEODETIC VERTICAL DATUM OF 1929

THIS MAP COMPLIES WITH NATIONAL MAP ACCURACY STANDARDS
FOR SALE BY U.S. GEOLOGICAL SURVEY, DENVER, COLORADO 80225, OR RESTON, VIRGINIA 22092
A FOLDER DESCRIBING TOPOGRAPHIC MAPS AND SYMBOLS IS AVAILABLE ON REQUEST



GRAY BUTTE, OREGON
44121-D1-TF-024

1985

DMA 1772 1 NE-SERIES Y892

