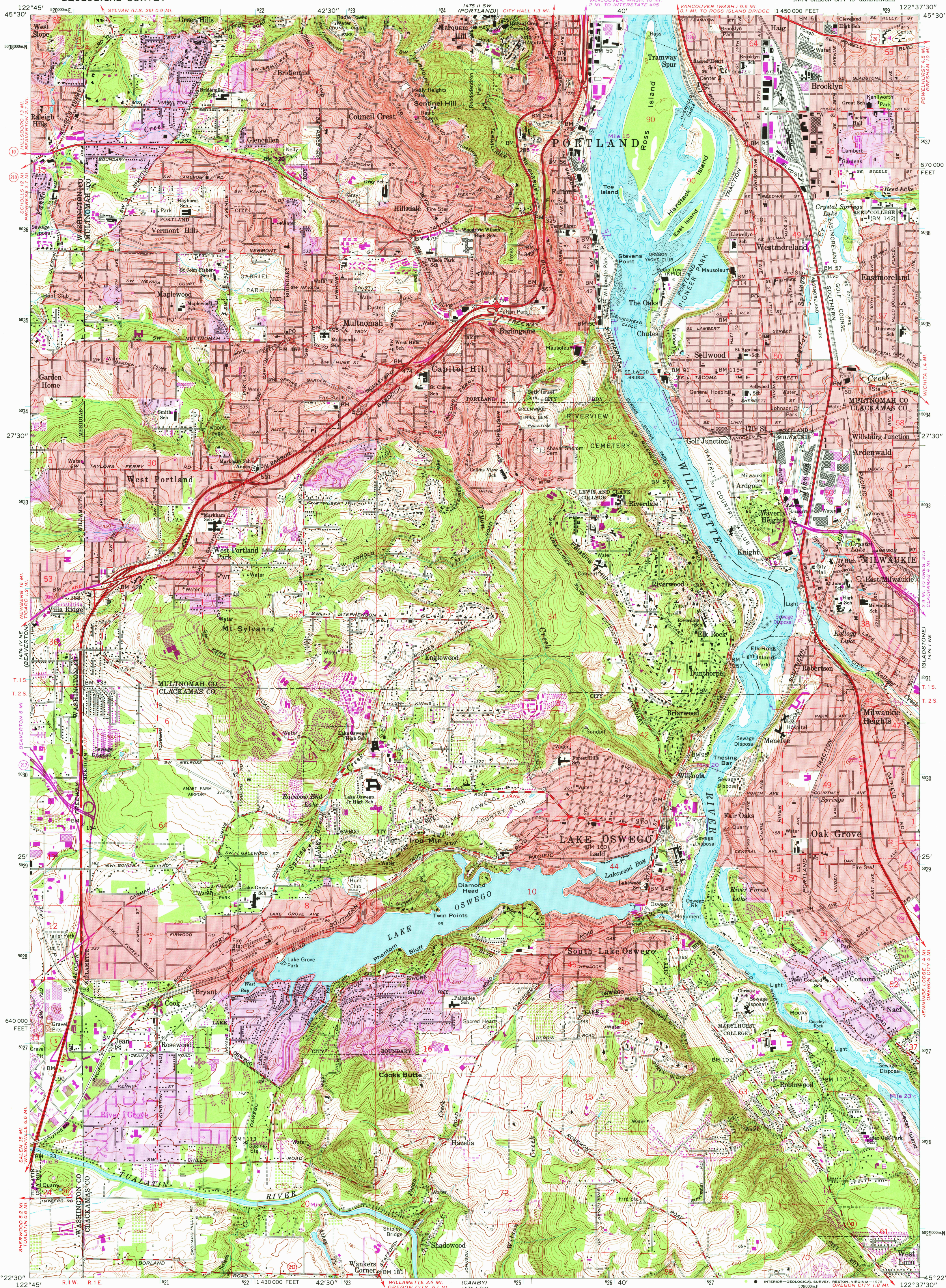


UNITED STATES  
DEPARTMENT OF THE INTERIOR  
GEOLOGICAL SURVEY

LAKE OSWEGO QUADRANGLE  
OREGON  
7.5 MINUTE SERIES (TOPOGRAPHIC)  
NW/4 OREGON CITY 15' QUADRANGLE



Mapped, edited, and published by the Geological Survey

Control by USGS, NOS/NOAA, USCE, and State of Oregon

Topography from aerial photographs by photogrammetric methods

Aerial photographs taken 1952. Field checked 1954

Revised from aerial photographs taken 1960. Field checked 1961

Selected hydrographic data compiled from NOS/NOAA

Charts 6155 (1959) and 6171 (1958)

This information is not intended for navigational purposes

Polycyclic projection. 1927 North American datum

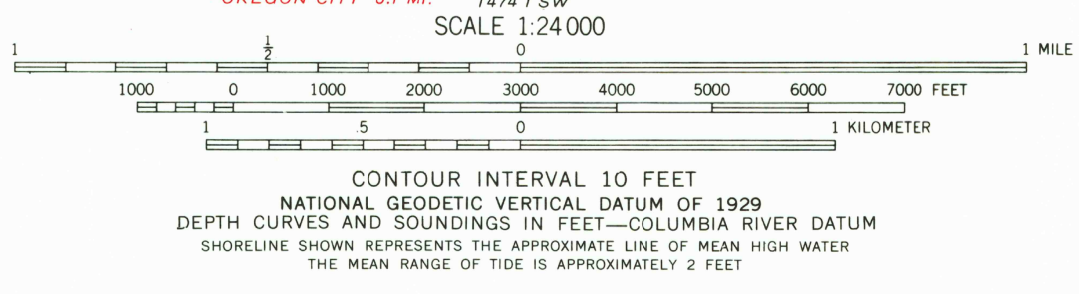
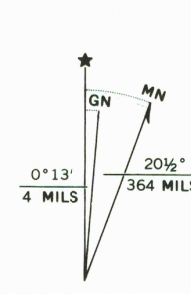
10,000-foot grid based on Oregon coordinate system, north zone

1000-meter Universal Transverse Mercator grid ticks,

zone 10, shown in blue

Red tint indicates areas in which only landmark buildings are shown

Fine red dashed lines indicate selected fence lines



ROAD CLASSIFICATION  
Heavy-duty ——— Light-duty ———  
Medium-duty - - - - - Unimproved dirt - - - - -  
Interstate Route U.S. Route State Route  
USGS  
Historical File  
Topographic Division  
LAKE OSWEGO, OREG.  
NW/4 OREGON CITY 15' QUADRANGLE  
N4522.5-W12237.5/7.5  
1961  
PHOTOREVISED 1970 and 1975  
AMS 1474 1 NW—SERIES V892

JUL 11 1978  
3200

THIS MAP COMPLIES WITH NATIONAL MAP ACCURACY STANDARDS  
FOR SALE BY U.S. GEOLOGICAL SURVEY, DENVER, COLORADO 80225, OR RESTON, VIRGINIA 22092  
A FOLDER DESCRIBING TOPOGRAPHIC MAPS AND SYMBOLS IS AVAILABLE ON REQUEST

Revisions shown in purple compiled from aerial photographs  
taken 1970 and 1975. This information not field checked  
Purple tint indicates extension of urban areas