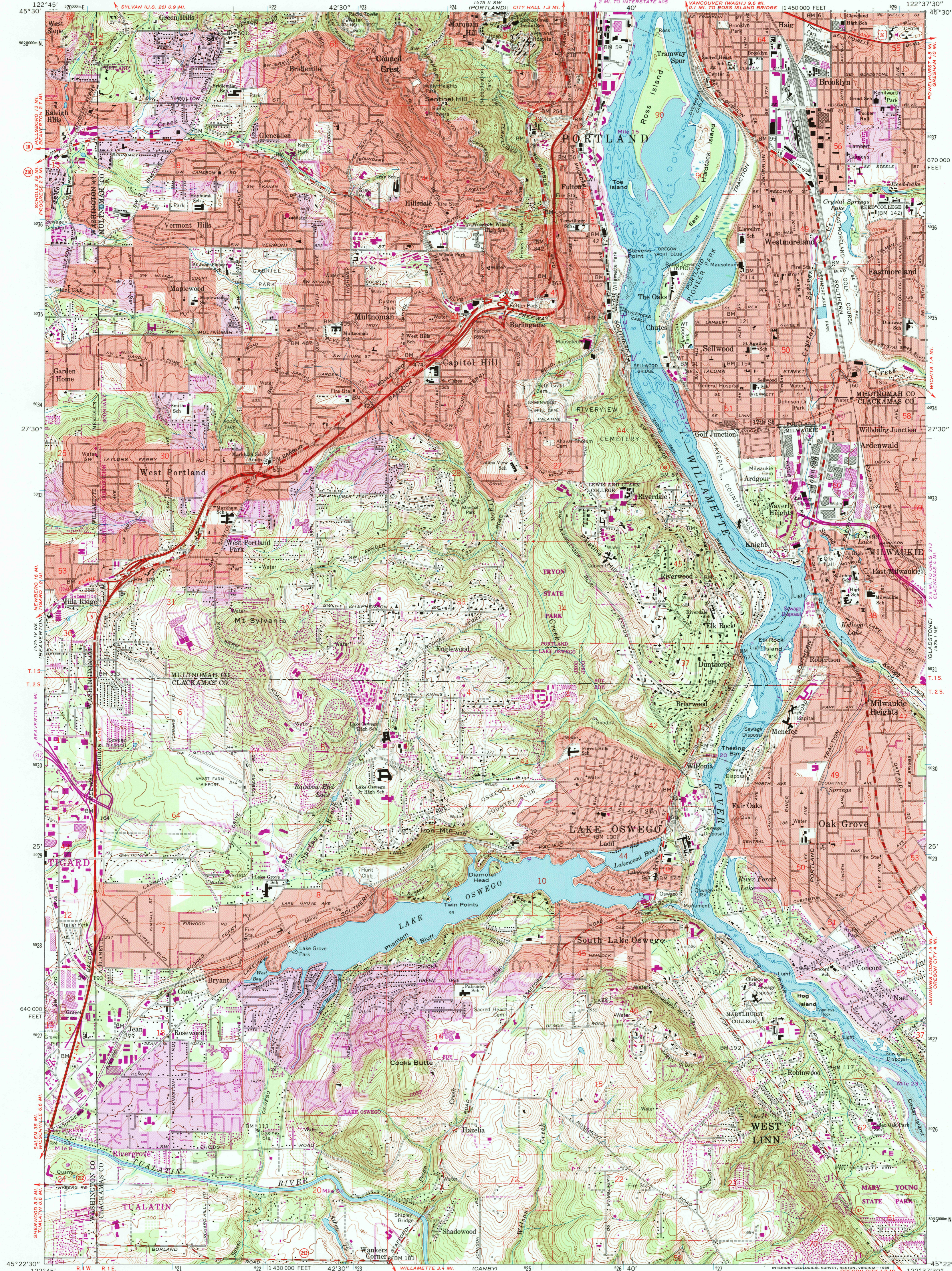
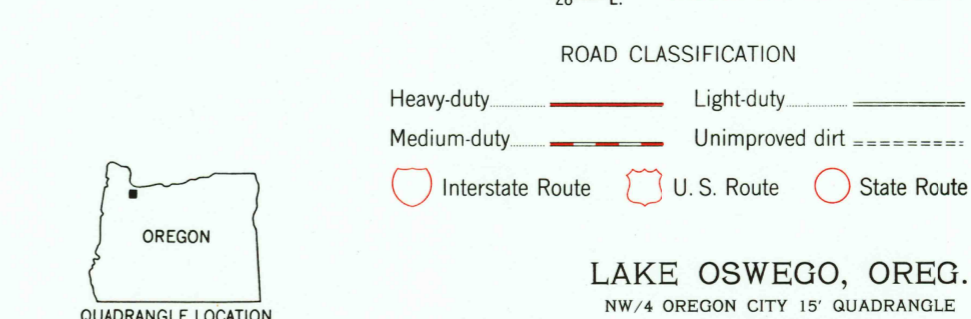
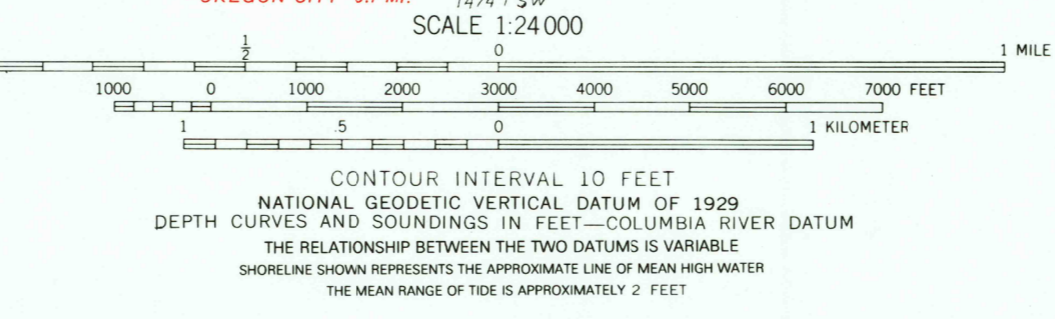
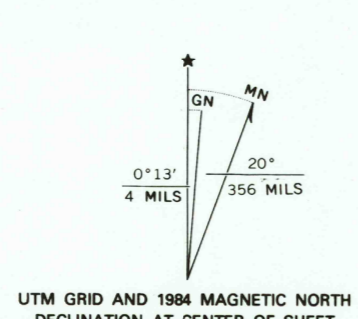


UNITED STATES
DEPARTMENT OF THE INTERIOR
GEOLOGICAL SURVEY

LAKE OSWEGO QUADRANGLE
OREGON
7.5 MINUTE SERIES (TOPOGRAPHIC)
NW/4 OREGON CITY 15' QUADRANGLE



Maped, edited, and published by the Geological Survey
Control by USGS, NOS/NOAA, USCE, and State of Oregon
Topography from aerial photographs by photogrammetric methods
Aerial photographs taken 1952. Field checked 1954
Revised from aerial photographs taken 1960. Field checked 1961
Selected hydrographic data compiled from NOS/NOAA
Charts 6155 (1959) and 6171 (1958)
This information is not intended for navigational purposes
Polyconic projection. 1927 North American datum
10,000-foot grid based on Oregon coordinate system, north zone
1000-meter Universal Transverse Mercator grid ticks,
zone 10, shown in blue
To place on the predicted North American Datum 1983
move the projection lines 23 meters north and
94 meters east
Red tint indicates areas in which only landmark buildings are shown
There may be private inholdings within the boundaries of
the National or State reservations shown on this map



USGS AND HISTORICAL
MAP ARCHIVES
NOV 0 2 1995
REC'D FILE COPY

LAKE OSWEGO, OREG.
NW/4 OREGON CITY 15' QUADRANGLE
45122-06-TF-024

1961
PHOTOREVISED 1984
DMA 1474 1 NW-SERIES Y892

