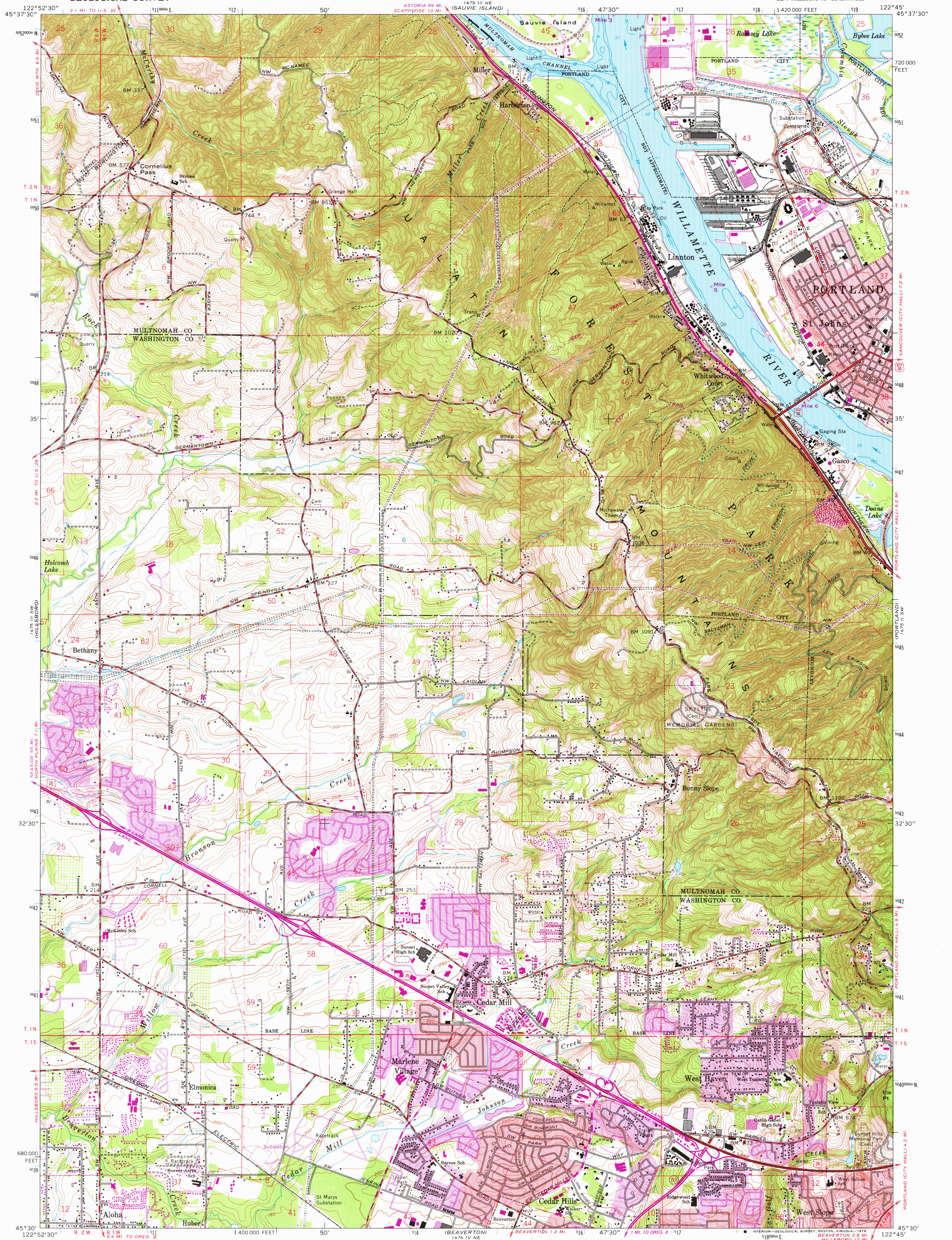


UNITED STATES
DEPARTMENT OF THE INTERIOR
GEOLOGICAL SURVEY

LINNTON QUADRANGLE
OREGON
7.5 MINUTE SERIES (TOPOGRAPHIC)
SE/4 HILLSBORO 15' QUADRANGLE



Maped, edited, and published by the Geological Survey
Control by USGS, NOS/NOAA, and State of Oregon

Topography from aerial photographs by photogrammetric methods 1954
Aerial photographs taken 1952. Field check 1954

Revised from aerial photographs taken 1960. Field check 1961
Selected hydrographic data compiled from NOS/NOAA Chart 6155 (1959)

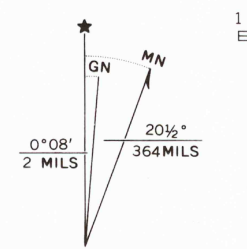
This information is not intended for navigational purposes

Polycyclic projection. 1927 North American datum
10,000-foot grid based on Oregon coordinate system, north zone

1000-meter Universal Transverse Mercator grid ticks,
zone 10, shown in blue

Red tint indicates areas in which only landmark buildings are shown
Dashed land lines indicate approximate locations

Fine red dashed lines indicate selected fence lines



SCALE 1:24,000
CONTOUR INTERVAL 10 FEET
NATIONAL GEODETIC VERTICAL DATUM OF 1929
DEPTH CURVES AND SOUNDINGS IN FEET—COLUMBIA RIVER DATUM
SHORELINE SHOWN REPRESENTS THE APPROXIMATE LINE OF MEAN HIGH WATER
THE MEAN RANGE OF TIDE IS APPROXIMATELY 2 FEET

THIS MAP COMPLIES WITH NATIONAL MAP ACCURACY STANDARDS
FOR SALE BY U. S. GEOLOGICAL SURVEY, DENVER, COLORADO 80225, OR RESTON, VIRGINIA 22092
A FOLDER DESCRIBING TOPOGRAPHIC MAPS AND SYMBOLS IS AVAILABLE ON REQUEST



ROAD CLASSIFICATION
Heavy-duty ——— Light-duty ———
Medium-duty ——— Unimproved dirt ———
U. S. Route ——— State Route ———

USGS
Historical File
Topographic Division

LINNTON, OREG.
SE/4 HILLSBORO 15' QUADRANGLE
N4530—W12245/7.5

MAY 0 4 1978
3150

Revisions shown in purple compiled by the Geological Survey from aerial
photographs taken 1970 and 1975. This information not field checked
Purple tint indicates extension of urban areas

PHOTOREVISED 1970 AND 1975
AMS 1475 III SE—SERIES V892