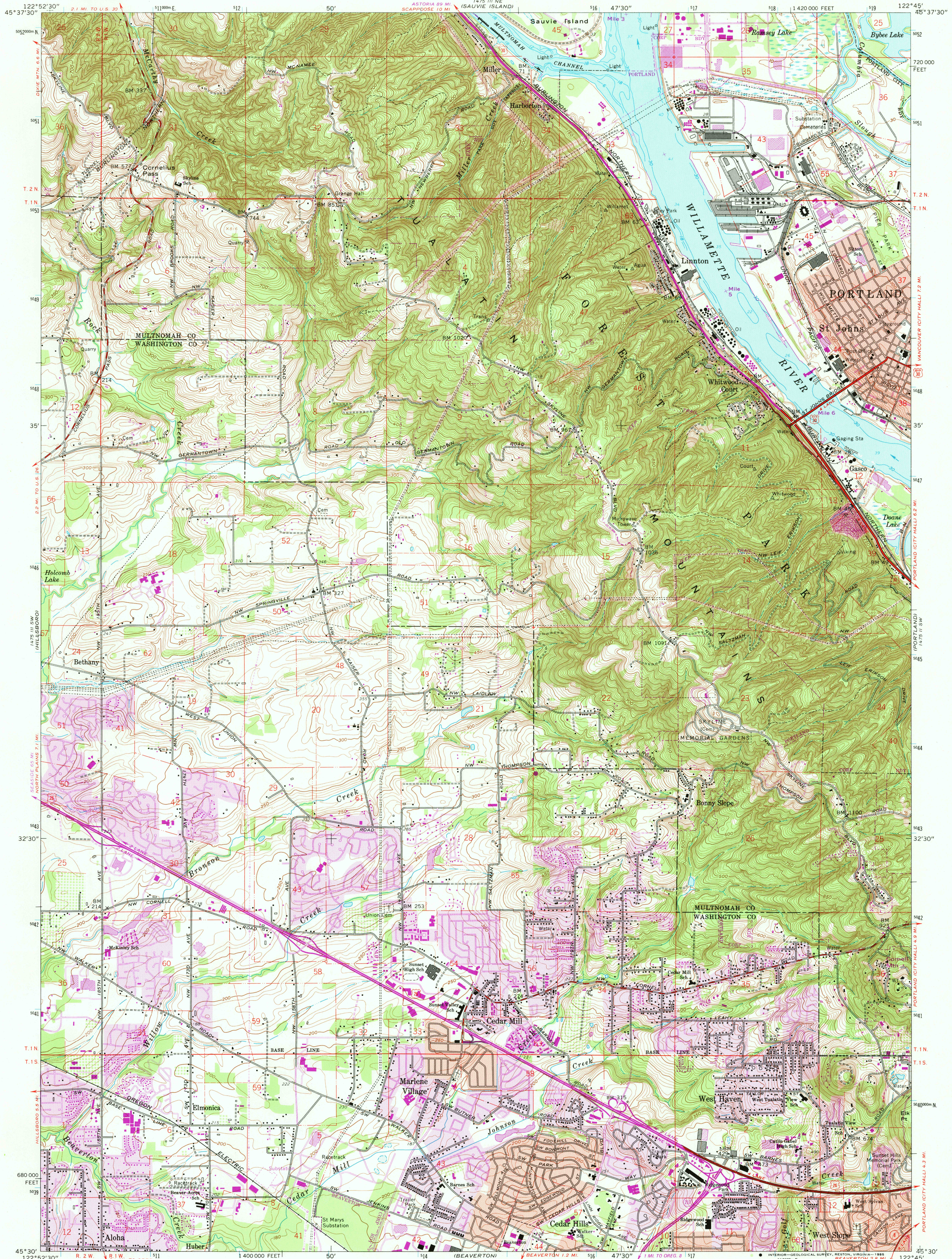
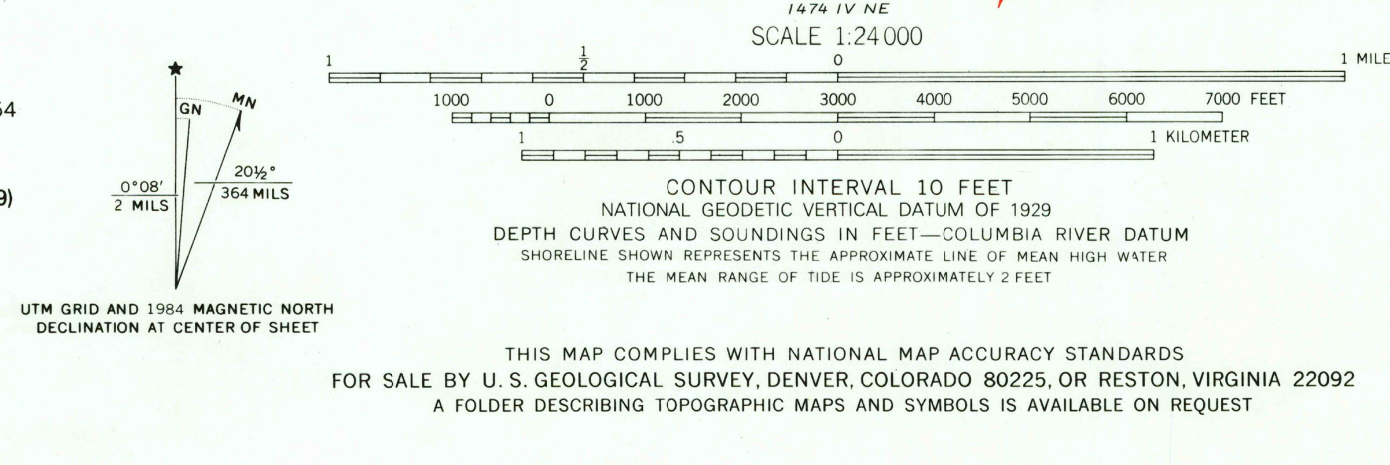


UNITED STATES
DEPARTMENT OF THE INTERIOR
GEOLOGICAL SURVEY

LINNTON QUADRANGLE
OREGON
7.5 MINUTE SERIES (TOPOGRAPHIC)
SE 1/4 HILLSBORO 15' QUADRANGLE



Mapped, edited, and published by the Geological Survey
Control by USGS, NOS/NOAA, and State of Oregon
Topography from aerial photographs by photogrammetric methods 1954
Aerial photographs taken 1952. Field check 1954
Revised from aerial photographs taken 1960. Field check 1961
Selected hydrographic data compiled from NOS/NOAA Chart 6155 (1959)
This information is not intended for navigational purposes
Polyconic projection. 1927 North American datum
10,000-foot grid based on Oregon coordinate system, north zone
1000-meter Universal Transverse Mercator grid ticks,
zone 10, shown in blue
To place on the predicted North American Datum 1983
move the projection lines 23 meters north and
94 meters east as shown by dashed corner ticks
Red tint indicates areas in which only landmark buildings are shown



ROAD CLASSIFICATION
Heavy-duty — Light-duty
Medium-duty — Unimproved dirt
U.S. Route — State Route

LINNTON, OREG.
SE 1/4 HILLSBORO 15' QUADRANGLE
45112-E7-TF-024
1961
PHOTOREVISED 1984
DMA 1475 III SE-SERIES V892

USGS NMU HISTORICAL MAP
JUL 2 - 1985
REC'D FILE COPY