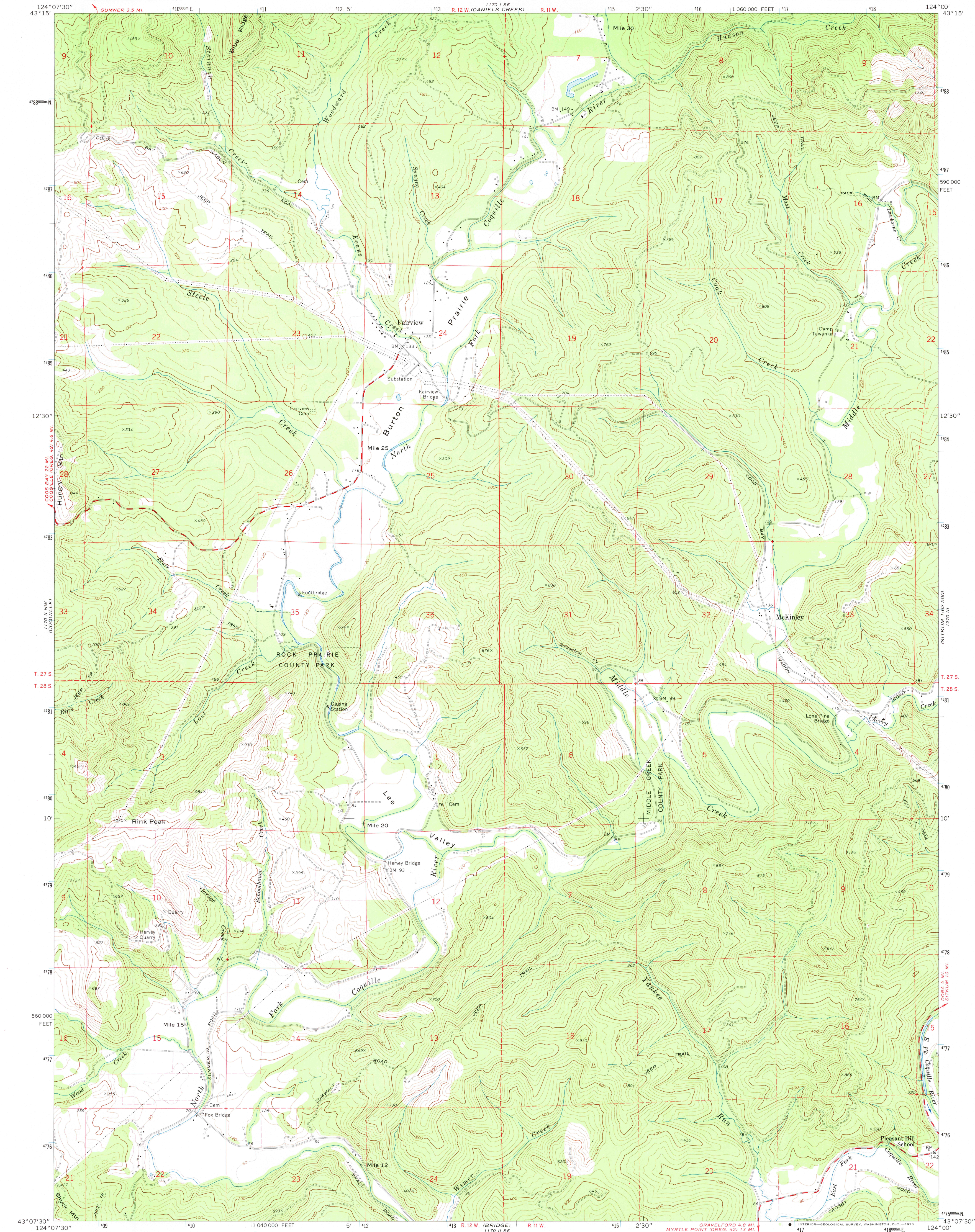


UNITED STATES
DEPARTMENT OF THE INTERIOR
GEOLOGICAL SURVEY

MC KINLEY QUADRANGLE
OREGON—COOS CO.
7.5 MINUTE SERIES (TOPOGRAPHIC)
NE/4 COQUILLE 15' QUADRANGLE

1:250,000
1:62,500
1:62,500

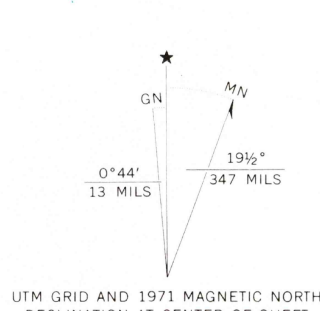


Mapped, edited, and published by the Geological Survey

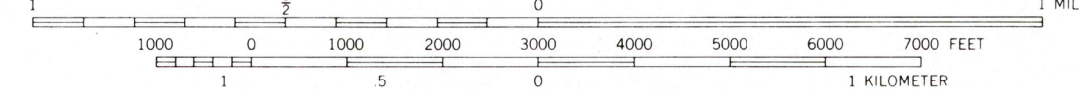
Control by USGS and USC&GS

Topography by photogrammetric methods from aerial photographs taken 1969-70. Field checked 1971

Projection and 10,000-foot grid ticks: Oregon coordinate system, south zone (Lambert conformal conic)
1000-meter Universal Transverse Mercator grid ticks, zone 10, shown in blue. 1927 North American datum
Fine red dashed lines indicate selected fence lines



SCALE 1:24,000



CONTOUR INTERVAL 40 FEET
DOTTED LINES REPRESENT 20-FOOT CONTOURS
DATUM IS MEAN SEA LEVEL



ROAD CLASSIFICATION	
Primary highway, hard surface	Light-duty road, hard or improved surface
Secondary highway, hard surface	Unimproved road
Interstate Route	U. S. Route
	State Route

MC KINLEY, OREG.
NE/4 COQUILLE 15' QUADRANGLE
N4307.5—W12400/7.5

1971
AMS 1170 II NE—SERIES V892

FOR SALE BY U. S. GEOLOGICAL SURVEY, DENVER, COLORADO 80225 OR WASHINGTON, D. C. 20242
A FOLDER DESCRIBING TOPOGRAPHIC MAPS AND SYMBOLS IS AVAILABLE ON REQUEST

DEC 5 1973

3246