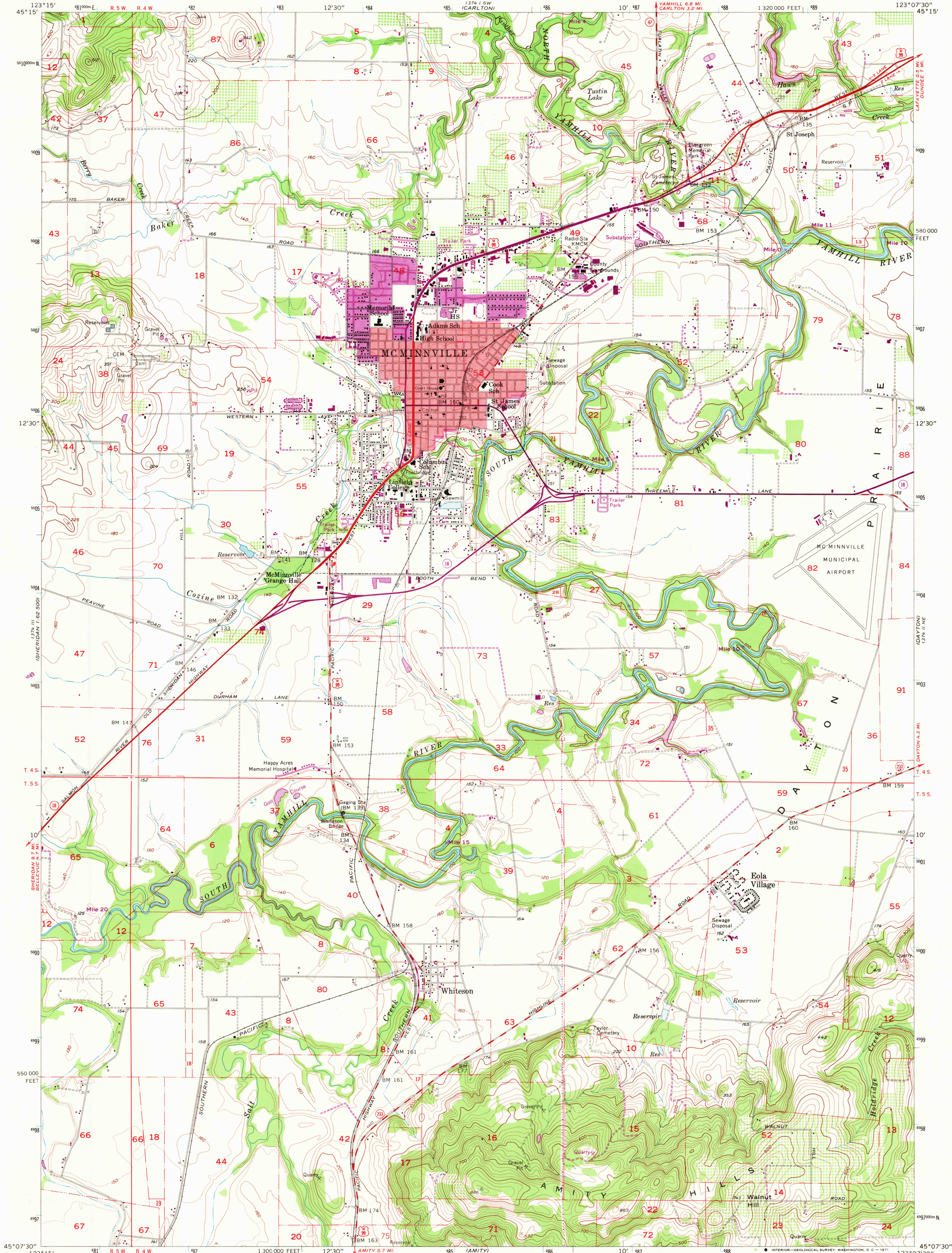
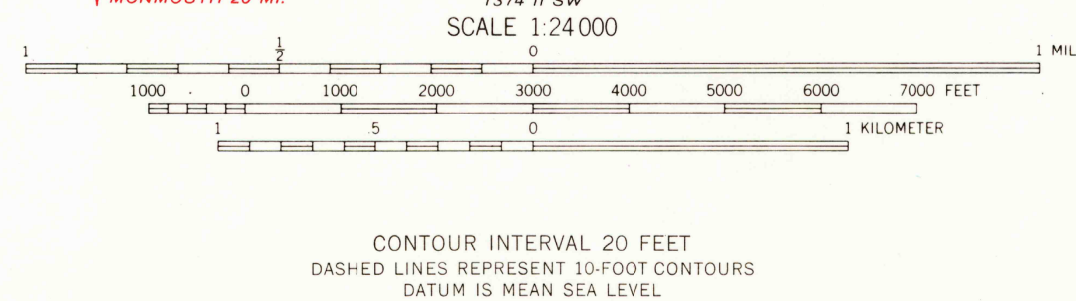
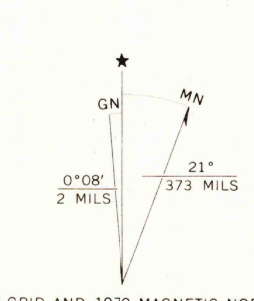


UNITED STATES
DEPARTMENT OF THE INTERIOR
GEOLOGICAL SURVEY

MC MINNVILLE QUADRANGLE
OREGON-YAMHILL CO.
7.5 MINUTE SERIES (TOPOGRAPHIC)
NW/4 MC MINNVILLE 15' QUADRANGLE



Maped, edited, and published by the Geological Survey
Control by USGS, USC&GS, and State of Oregon
Topography from aerial photographs by Kesh plotter and by
planetable surveys 1957. Aerial photographs taken 1954
Polyconic projection. 1927 North American datum
10,000-foot grid based on Oregon coordinate system,
north zone
1000-meter Universal Transverse Mercator grid ticks,
zone 10, shown in blue
Red tint indicates areas in which only
landmark buildings are shown
Purple tint indicates extension of urban areas



ROAD CLASSIFICATION
Heavy-duty ——— Light-duty ———
Medium-duty ——— Unimproved dirt ———
U.S. Route ——— State Route ———

MC MINNVILLE, OREG.
NW/4 MC MINNVILLE 15' QUADRANGLE
N4507.5—W12307.5/7.5

THIS MAP COMPLIES WITH NATIONAL MAP ACCURACY STANDARDS
FOR SALE BY U.S. GEOLOGICAL SURVEY, DENVER, COLORADO 80225, OR WASHINGTON, D.C. 20242
A FOLDER DESCRIBING TOPOGRAPHIC MAPS AND SYMBOLS IS AVAILABLE ON REQUEST

Revisions shown in purple compiled from aerial photographs
taken 1970. This information not field checked

1957
PHOTOREVISED 1970
AMS 1374 II NW—SERIES V892

NOV 22 1971
USGS
Historical File
Topographic Division