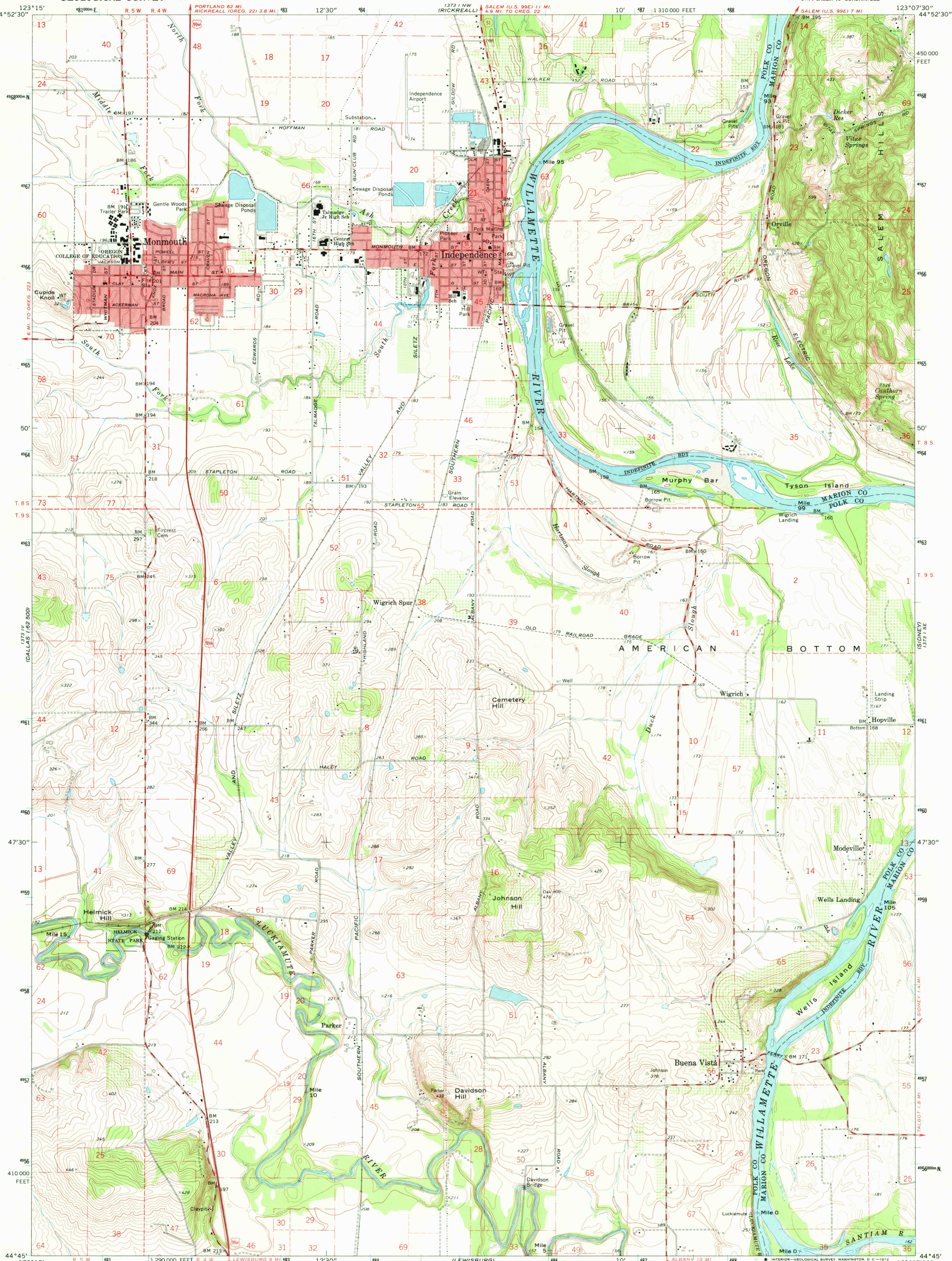


UNITED STATES  
DEPARTMENT OF THE INTERIOR  
GEOLOGICAL SURVEY

MONMOUTH QUADRANGLE  
OREGON  
7.5 MINUTE SERIES (TOPOGRAPHIC)  
SW/4 SALEM 15' QUADRANGLE



Mapped, edited, and published by the Geological Survey

Control by USGS, USC&GS, and State of Oregon

Topography by photogrammetric methods from aerial photographs taken 1967. Field checked 1970

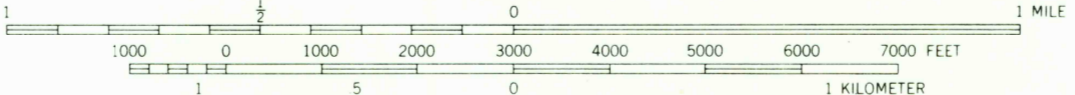
Polyconic projection. 1927 North American datum

10,000-foot grid based on Oregon coordinate system, north zone

1000-meter Universal Transverse Mercator grid ticks, zone 10, shown in blue

Red tint indicates areas in which only landmark buildings are shown

Fine red dashed lines indicate selected fence lines



CONTOUR INTERVAL 10 FEET

DOTTED LINES REPRESENT 5-FOOT CONTOURS

DATUM IS MEAN SEA LEVEL

ROAD CLASSIFICATION

Primary highway, all weather, hard surface

Secondary highway, all weather, hard surface

Light-duty road, all weather, improved surface

Unimproved road, fair or dry weather

U. S. Route

State Route



OREGON  
QUADRANGLE LOCATION

MONMOUTH, OREG. MAY 1 1972

SW/4 SALEM 15' QUADRANGLE

N4445—W12307.5/7.5

1970

AMS 1373 I SW—SERIES V892

THIS MAP COMPLIES WITH NATIONAL MAP ACCURACY STANDARDS

FOR SALE BY U. S. GEOLOGICAL SURVEY, DENVER, COLORADO 80225, OR WASHINGTON, D. C. 20242

A FOLDER DESCRIBING TOPOGRAPHIC MAPS AND SYMBOLS IS AVAILABLE ON REQUEST

USGS  
HISTORICAL FILE  
TOPOGRAPHIC DIVISION

2280