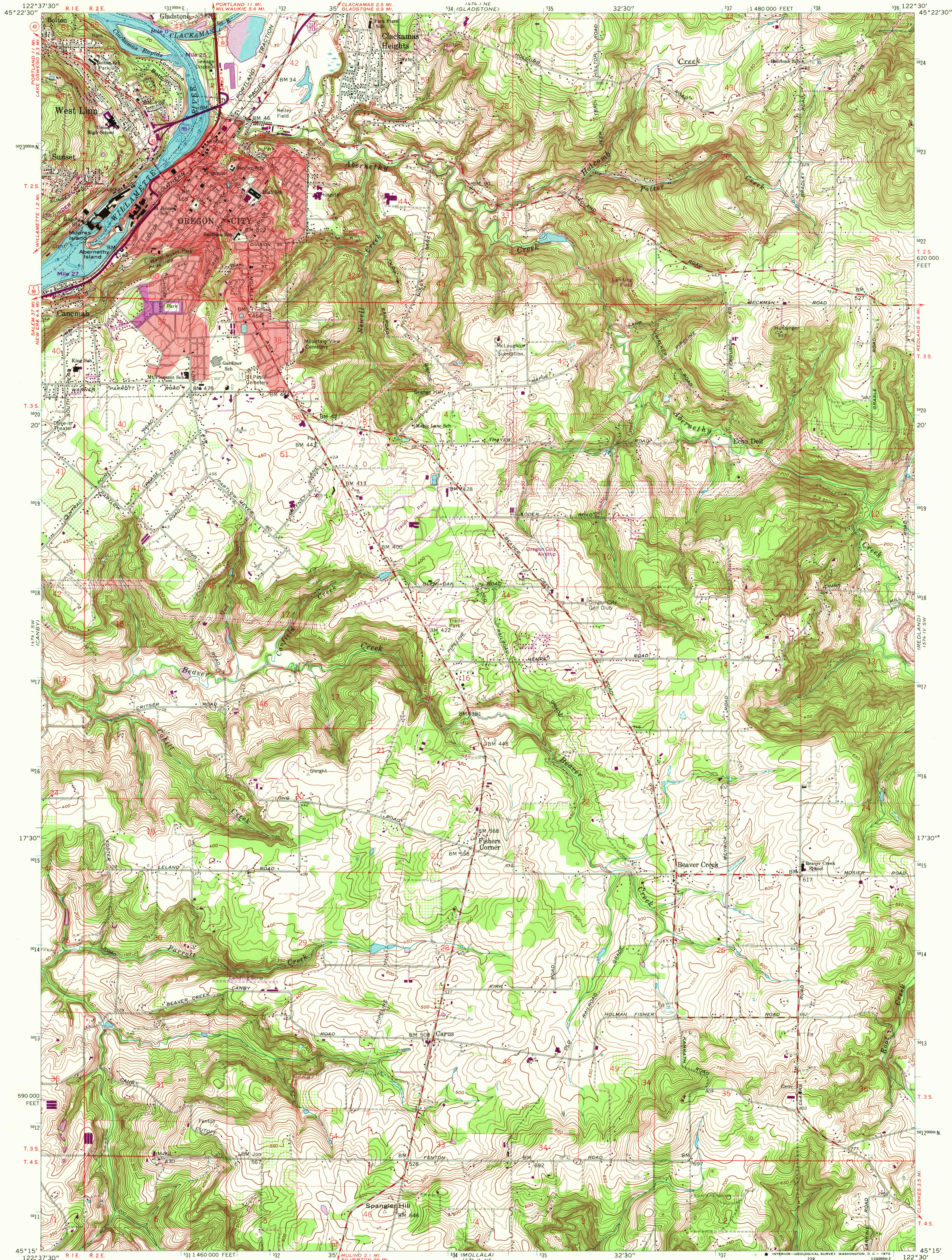


UNITED STATES  
DEPARTMENT OF THE INTERIOR  
GEOLOGICAL SURVEY

OREGON CITY QUADRANGLE  
OREGON-CLACKAMAS CO.  
7.5 MINUTE SERIES (TOPOGRAPHIC)  
SE 1/4 OREGON CITY 15' QUADRANGLE



Mapped, edited, and published by the Geological Survey

Control by USGS, USC&GS, USCE, and State of Oregon

Topography from aerial photographs by photogrammetric methods

Aerial photographs taken 1952. Field check 1954

Revised from aerial photographs taken 1960. Field check 1961

Selected hydrographic data compiled from USC&GS Chart 6171 (1958)

This information is not intended for navigational purposes

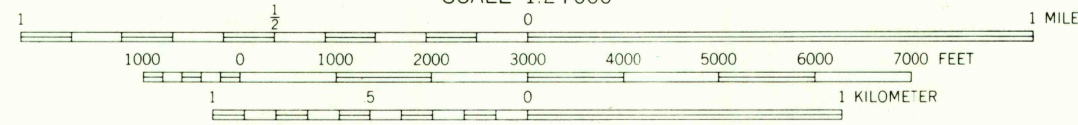
Polyconic projection. 1927 North American datum

10,000-foot grid based on Oregon coordinate system, north zone

1000-meter Universal Transverse Mercator grid ticks, zone 10, shown in blue

Red tint indicates area in which only landmark buildings are shown

Fine red dashed lines indicate selected fence lines



CONTOUR INTERVAL 10 FEET  
DATUM IS MEAN SEA LEVEL  
DEPTH CURVES AND SOUNDINGS IN FEET-DATUM IS MEAN LOWER LOW WATER BELOW LOCKS  
AND IS 50 FEET ABOVE MEAN SEA LEVEL ABOVE LOCKS  
(COLUMBIA RIVER AND WILLAMETTE RIVER DATA)  
SHORELINE SHOWN REPRESENTS THE APPROXIMATE LINE OF MEAN HIGH WATER  
THE MEAN RANGE OF TIDE IS APPROXIMATELY 2 FEET

THIS MAP COMPLIES WITH NATIONAL MAP ACCURACY STANDARDS  
FOR SALE BY U.S. GEOLOGICAL SURVEY, DENVER, COLORADO 80225, OR WASHINGTON, D.C. 20242  
A FOLDER DESCRIBING TOPOGRAPHIC MAPS AND SYMBOLS IS AVAILABLE ON REQUEST

USGS  
Historical File  
Topographic Division



QUADRANGLE LOCATION

ROAD CLASSIFICATION

- Heavy-duty
- Light-duty
- Medium-duty
- Unimproved dirt
- U.S. Route
- State Route
- Interstate Route

OREGON CITY, OREG.  
SE 1/4 OREGON CITY 15' QUADRANGLE  
N4515-W12230/7.5

1961  
PHOTO-REVISED 1970  
AMS 1474 I SE-SERIES V892

USGS  
HISTORICAL FILE  
TOPOGRAPHIC DIVISION

JAN 25 1972