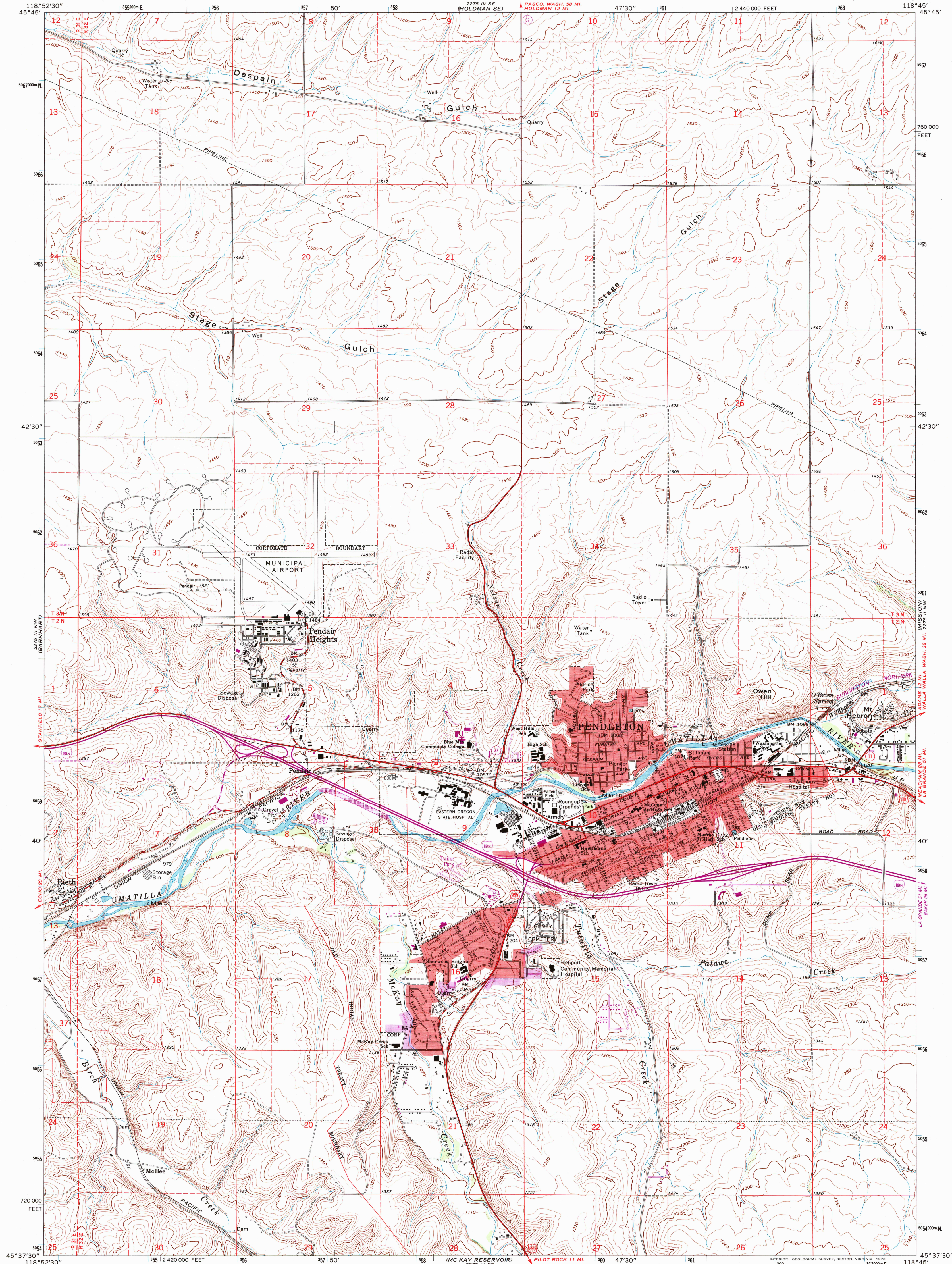




U.S. DEPARTMENT OF THE INTERIOR  
U.S. GEOLOGICAL SURVEY

PENDLETON QUADRANGLE  
OREGON-UMATILLA CO.  
7.5 MINUTE SERIES (TOPOGRAPHIC)



Mapped, edited, and published by the Geological Survey

Control by USGS, NOS/NOAA, and State of Oregon

Topography by photogrammetric methods from aerial

photographs taken 1964. Field checked 1966

Polyconic projection. 1927 North American datum

10,000-foot grid based on Oregon coordinate system,

north zone

1000-meter Universal Transverse Mercator grid ticks,

zone 11, shown in blue

Red tint indicates areas in which only landmark buildings

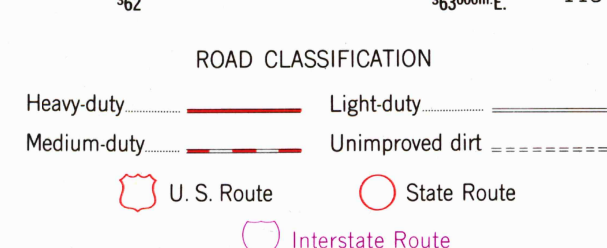
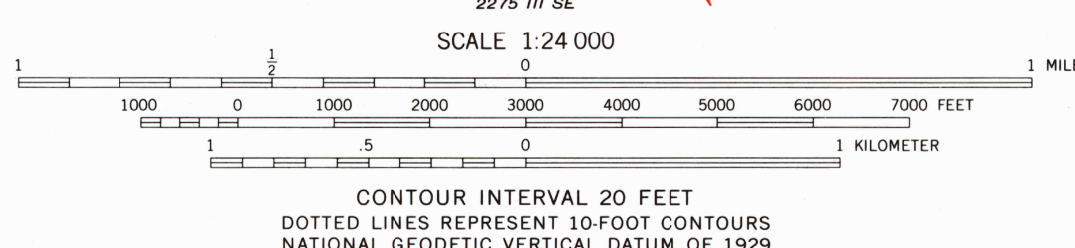
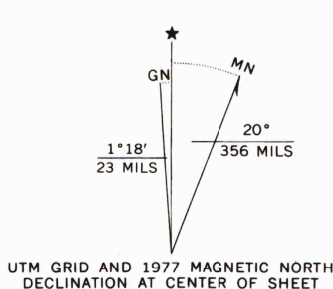
are shown

Fine red dashed lines indicate selected fence lines

Revisions shown in purple compiled from aerial photographs

taken 1976. This information is unchecked

Purple tint indicates extension of urban areas



PENDLETON, OREG.  
N4537.5—W11845.7.5

1966  
PHOTOREVISED 1976  
AMS 2275 III NE—SERIES V892

RECEIVED

SEP 30 2000

USGS HAND

HISTORICAL MAP ARCHIVES

1:250,000 1:250,000 1:250,000

9 780607 447224