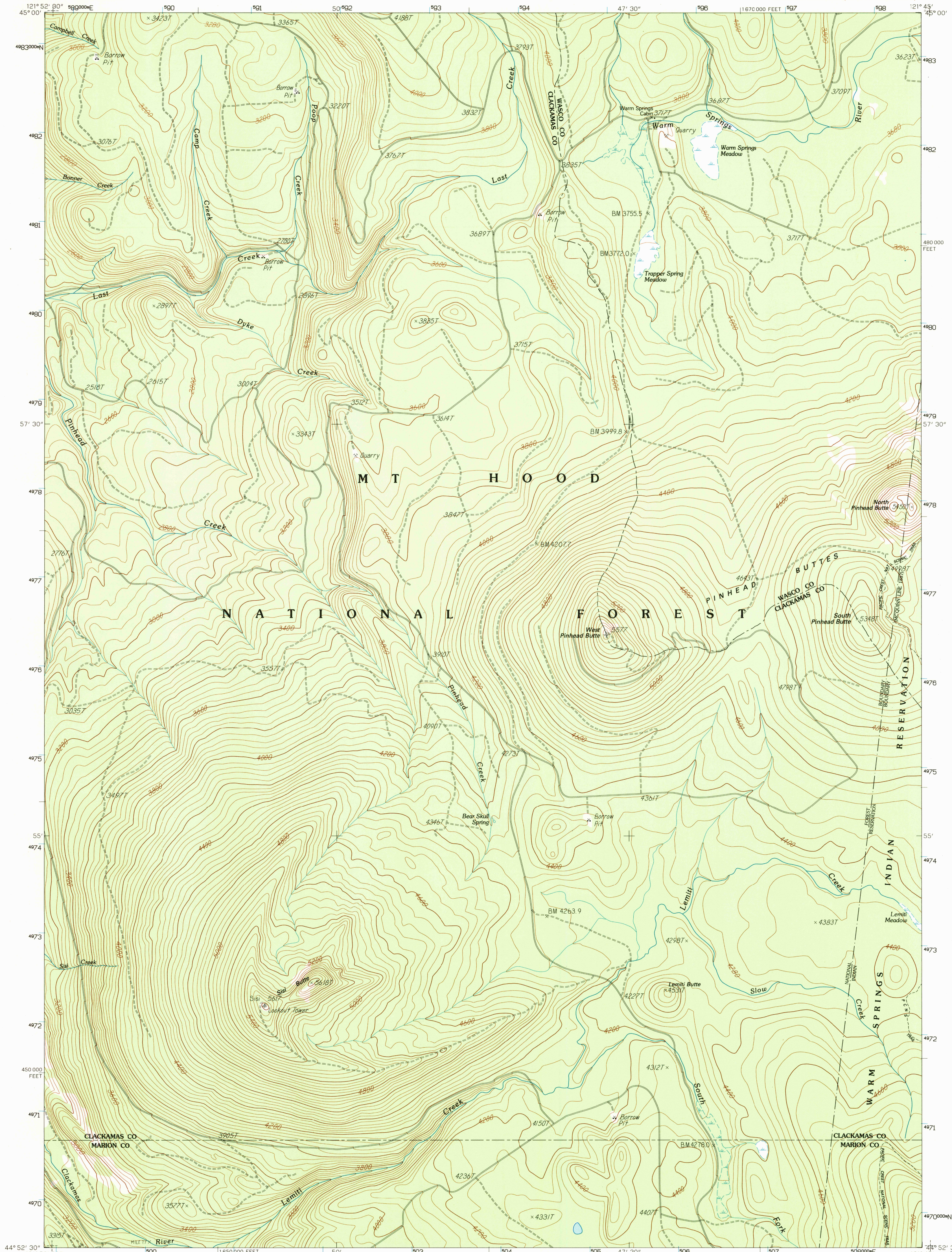


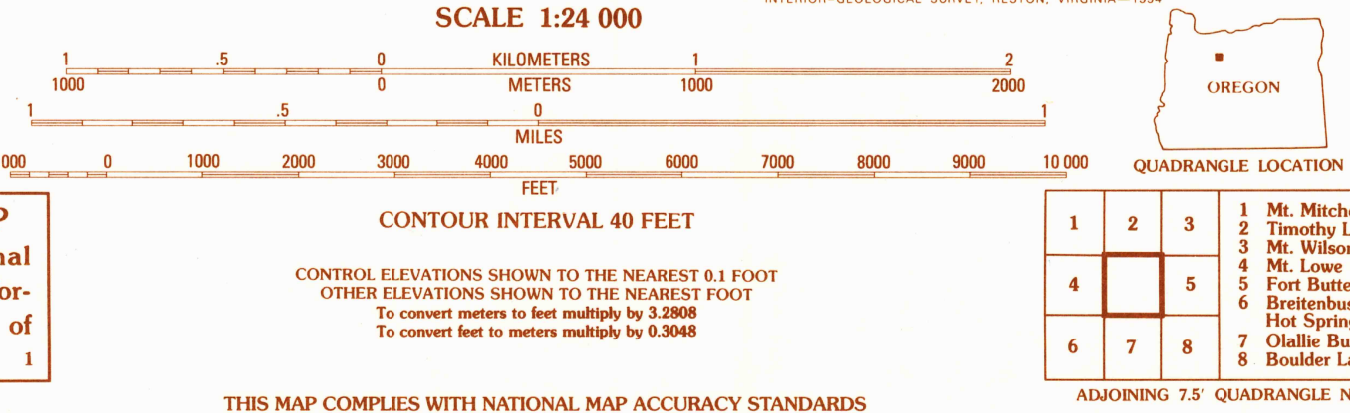
UNITED STATES
DEPARTMENT OF THE INTERIOR
GEOLOGICAL SURVEY

PINHEAD BUTTES QUADRANGLE
OREGON
7.5 MINUTE SERIES (TOPOGRAPHIC)



PRODUCED BY THE UNITED STATES GEOLOGICAL SURVEY
CONTROL BY USGS, NOS-NOAA
COMPILED FROM AERIAL PHOTOGRAPHS TAKEN 1982
FIELD CHECKED 1985, MAP EDITED 1986
PROJECTION LAMBERT CONFORMAL CONIC
BLUE 1000-METER UNIVERSAL TRANSVERSE MERCATOR TICS, ZONE 10
10 000-FOOT STATE GRID TICS OREGON, NORTH ZONE
UTM GRID DECLINATION 0° 50' EAST
1994 MAGNETIC NORTH DECLINATION 18° EAST
VERTICAL DATUM NATIONAL GEODETIC VERTICAL DATUM OF 1929
HORIZONTAL DATUM NORTH AMERICAN DATUM OF 1927 (NAD 27)
North American Datum of 1983 (NAD 83) is shown by dashed corner ticks.
The values of the shift between NAD 27 and NAD 83 for 7.5-minute intersections are
obtainable from National Geodetic Survey NADCON software.
There may be private inholdings within the boundaries of any Federal and State
reservations shown on this map.
No distinction made between houses, barns, and other buildings.
Land lines have not been established in this area.
Photosinspected from 1990 source; no major culture or drainage changes
observed. Boundaries and names revised 1994.

PROVISIONAL MAP
Produced from original
manuscript drawings. Infor-
mation shown as of date of
photography.



ROAD LEGEND
Improved Road.....
Unimproved Road.....
Trail.....
Interstate Route U.S. Route State Route
PINHEAD BUTTES, OR
PROVISIONAL EDITION 1986

USGS AND HISTORICAL
MAP ARCHIVES
MAR 18 1996
REC'D FILE COPY

THIS MAP COMPLIES WITH NATIONAL MAP ACCURACY STANDARDS
FOR SALE BY U.S. GEOLOGICAL SURVEY
DENVER, COLORADO 80225 OR RESTON, VIRGINIA 22092

44121-H7-TF-024
MINOR REVISION 1994