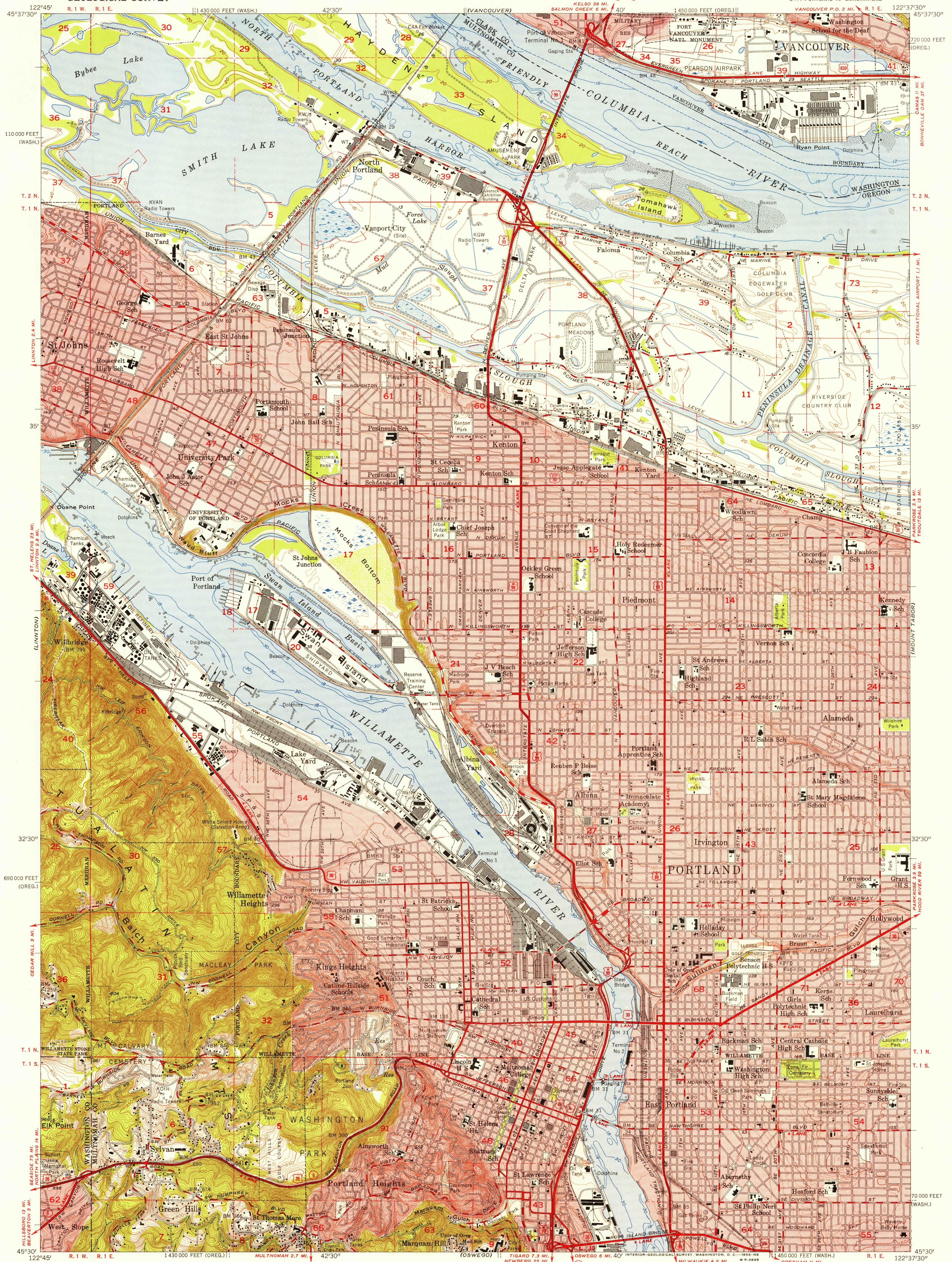


UNITED STATES
DEPARTMENT OF THE INTERIOR
GEOLOGICAL SURVEY

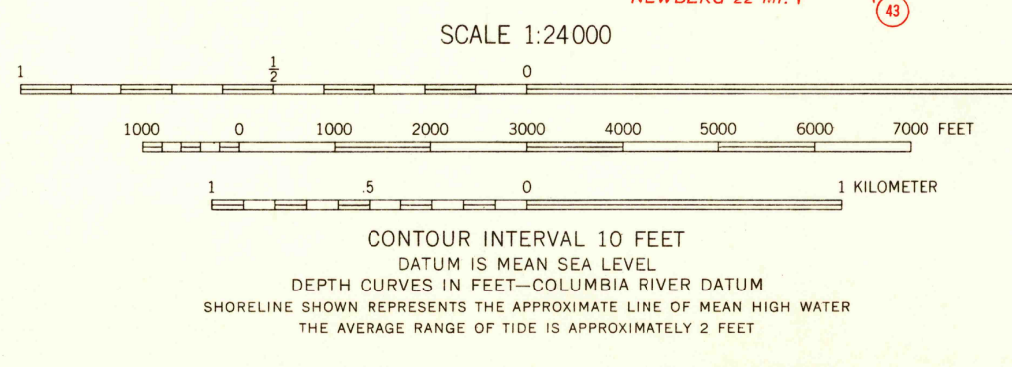
PORTLAND QUADRANGLE
OREGON—WASHINGTON
7.5 MINUTE SERIES (TOPOGRAPHIC)
SW/4 PORTLAND 15' QUADRANGLE



U.S.G.S.
FILE COPY
TOPOGRAPHIC DIVISION

U.S.G.S.
FILE COPY
TOPOGRAPHIC DIVISION

Mapped, edited, and published by the Geological Survey
Control by USC&GS and State of Oregon
Topography from aerial photographs by stereoplanigraph
and by planetarium surveys. Culture and drainage in part by USC&GS
Aerial photographs taken 1951. Field check 1954
Hydrography compiled from USC&GS Charts 6155 (1954), and 6156 (1953)
Polyconic projection. 1927 North American datum
10,000-foot grids based on Oregon coordinate system, north zone
and Washington coordinate system, south zone
Red tint indicates areas in which only landmark buildings are shown
Dashed land lines indicate approximate locations



USCS
Historical File
Topographic Division

ROAD CLASSIFICATION
Heavy-duty ————— Light-duty —————
Medium-duty ————— Unimproved dirt —————
U. S. Route ———— State Route ————



PORTLAND, OREG.—WASH.
SW/4 PORTLAND 15' QUADRANGLE
N4530—W12237.5/7.5

1954

DEC 21 1956

4675