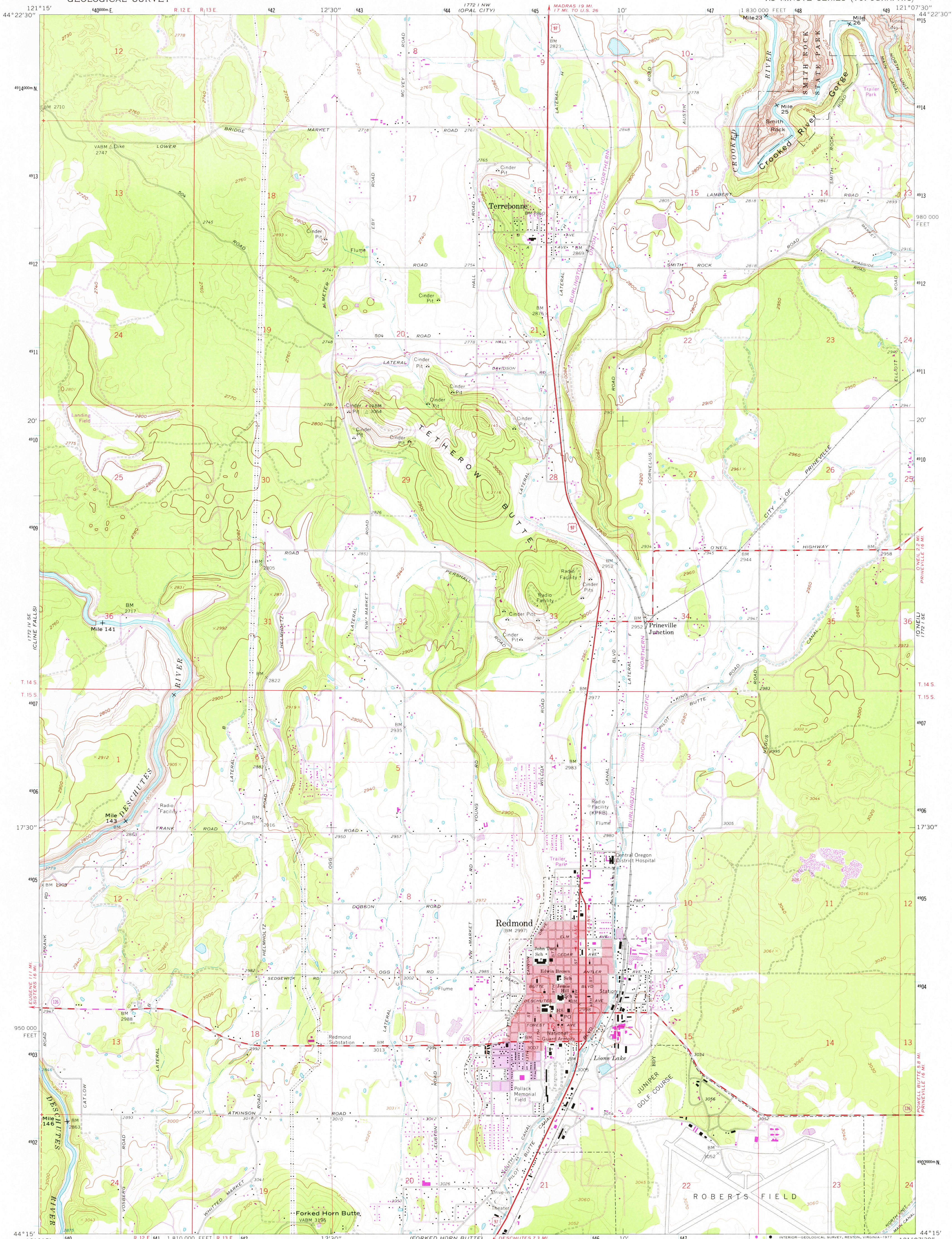
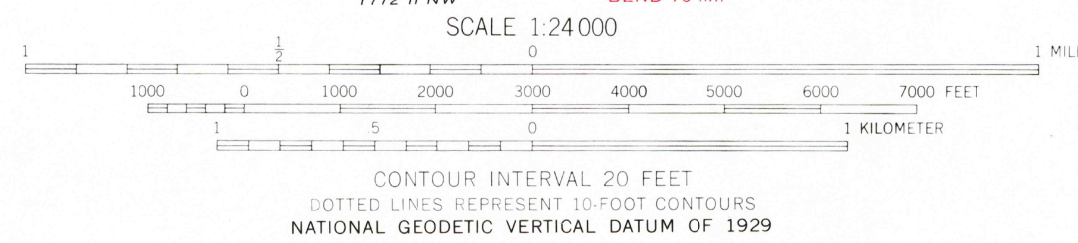
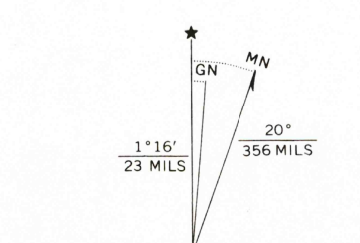


UNITED STATES
DEPARTMENT OF THE INTERIOR
GEOLOGICAL SURVEY

REDMOND QUADRANGLE
OREGON—DESCHUTES CO.
7.5 MINUTE SERIES (TOPOGRAPHIC)



Mapped, edited, and published by the Geological Survey
Control by USGS and USC&GS
Topography by photogrammetric methods from aerial
photographs taken 1957. Field checked 1962
Polyconic projection. 1927 North American datum
10,000-foot grid based on Oregon coordinate system, south zone
1000-meter Universal Transverse Mercator grid ticks,
zone 10, shown in blue
Red tint indicates area in which only landmark buildings are shown
Fine red dashed lines indicate selected fence lines
Revisions shown in purple compiled from aerial photographs
taken 1975. This information not field checked
Purple tint indicates extension of urban areas



ROAD CLASSIFICATION	
Heavy-duty	Light-duty
Medium-duty	Unimproved dirt
U. S. Route	State Route

THIS MAP COMPLIES WITH NATIONAL MAP ACCURACY STANDARDS
FOR SALE BY U. S. GEOLOGICAL SURVEY, DENVER, COLORADO 80225, OR RESTON, VIRGINIA 22092
A FOLDER DESCRIBING TOPOGRAPHIC MAPS AND SYMBOLS IS AVAILABLE ON REQUEST

USGS
Historical File
Topographic Division

REDMOND, OREG.
N4415—W12107.5/7.5
1962
PHOTOREVISED 1975
ANS 1772 I SW—SERIES V892

SEP 22 1977

3750