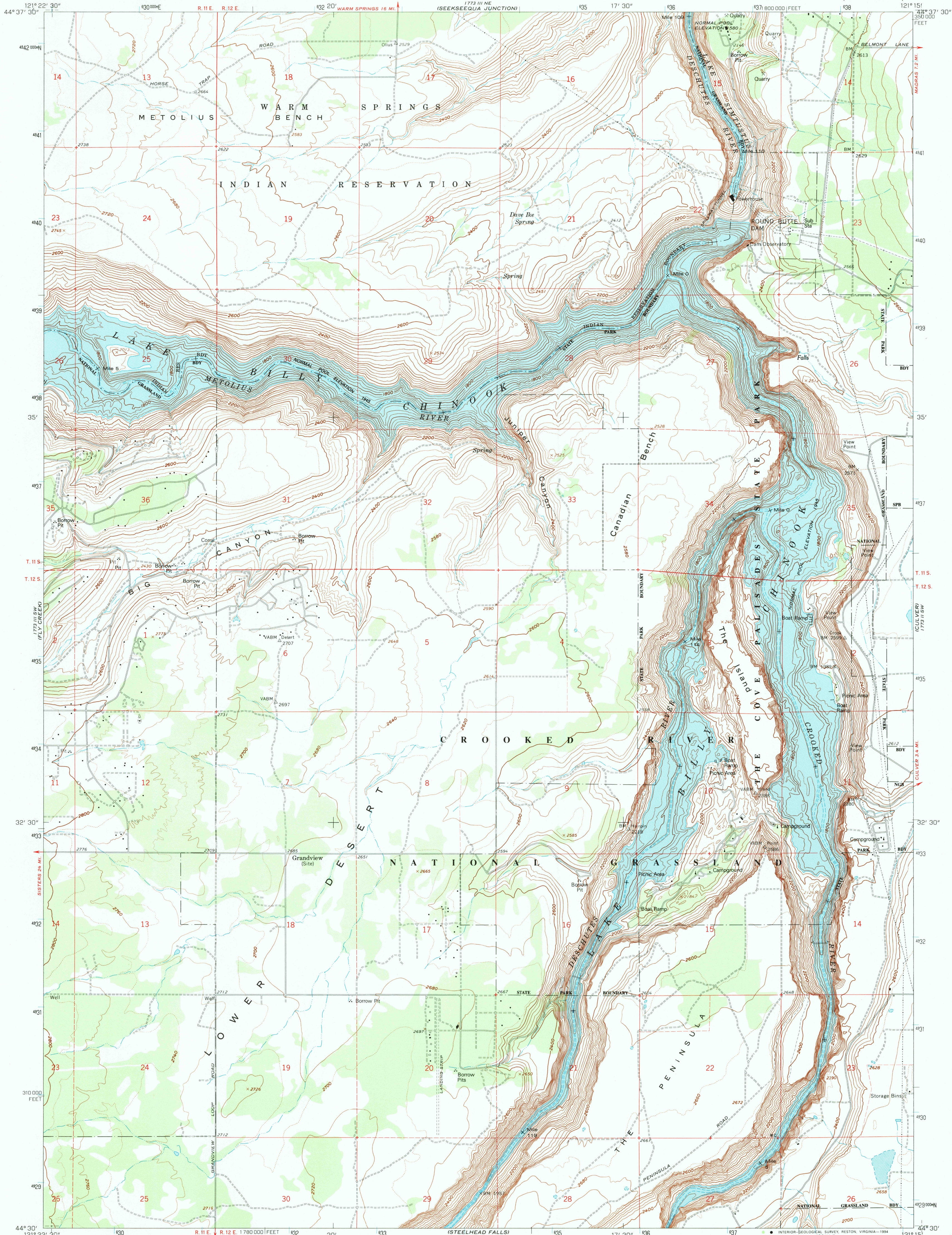


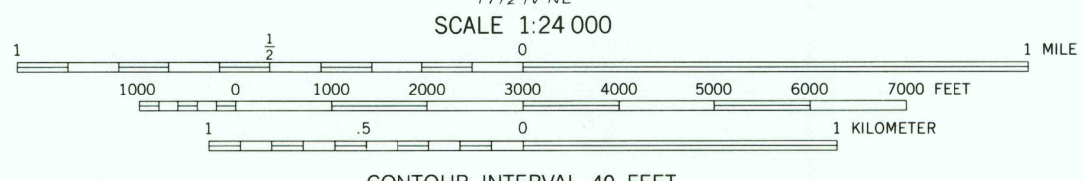
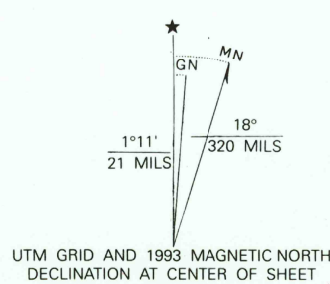
UNITED STATES
DEPARTMENT OF THE INTERIOR
GEOLOGICAL SURVEY

ROUND BUTTE DAM QUADRANGLE
OREGON—JEFFERSON CO.
7.5 MINUTE SERIES (TOPOGRAPHIC)



Produced by the United States Geological Survey
Revised in cooperation with U.S. Forest Service
Control by USGS and NOS/NOAA
Compiled from aerial photographs taken 1957. Field checked 1962
Revised from aerial photographs taken 1982. Limited field check 1985
Map edited 1985

1927 North American Datum (NAD 27). Projection and
10,000-foot ticks: Oregon Coordinate System, north zone
(Lambert Conformal Conic)
Blue 1000-meter Universal Transverse Mercator ticks, zone 10
North American Datum of 1983 (NAD 83) is shown by dashed
corner ticks. The values of the shift between NAD 27 and NAD 83
for 7.5-minute intersections are given in USGS Bulletin 1875
There may be private inholdings within the boundaries of the
National or State reservations shown on this map
Photorevised from 1991 source; no major culture or drainage
changes observed. Boundaries and names revised 1993



THIS MAP COMPLIES WITH NATIONAL MAP ACCURACY STANDARDS
FOR SALE BY U.S. GEOLOGICAL SURVEY
DENVER, COLORADO 80225, OR RESTON, VIRGINIA 22092
A FOLDER DESCRIBING TOPOGRAPHIC MAPS AND SYMBOLS IS AVAILABLE ON REQUEST



ROAD CLASSIFICATION
Primary highway, hard surface ——— Light-duty road, hard or improved surface ———
Secondary highway, hard surface ——— Unimproved road ———
Interstate Route ——— U. S. Route ——— State Route ———

ROUND BUTTE DAM, OREG.
44121-E3-TF-024

1985
MINOR REVISION 1993
DMA 1773 III SE-SERIES V892

