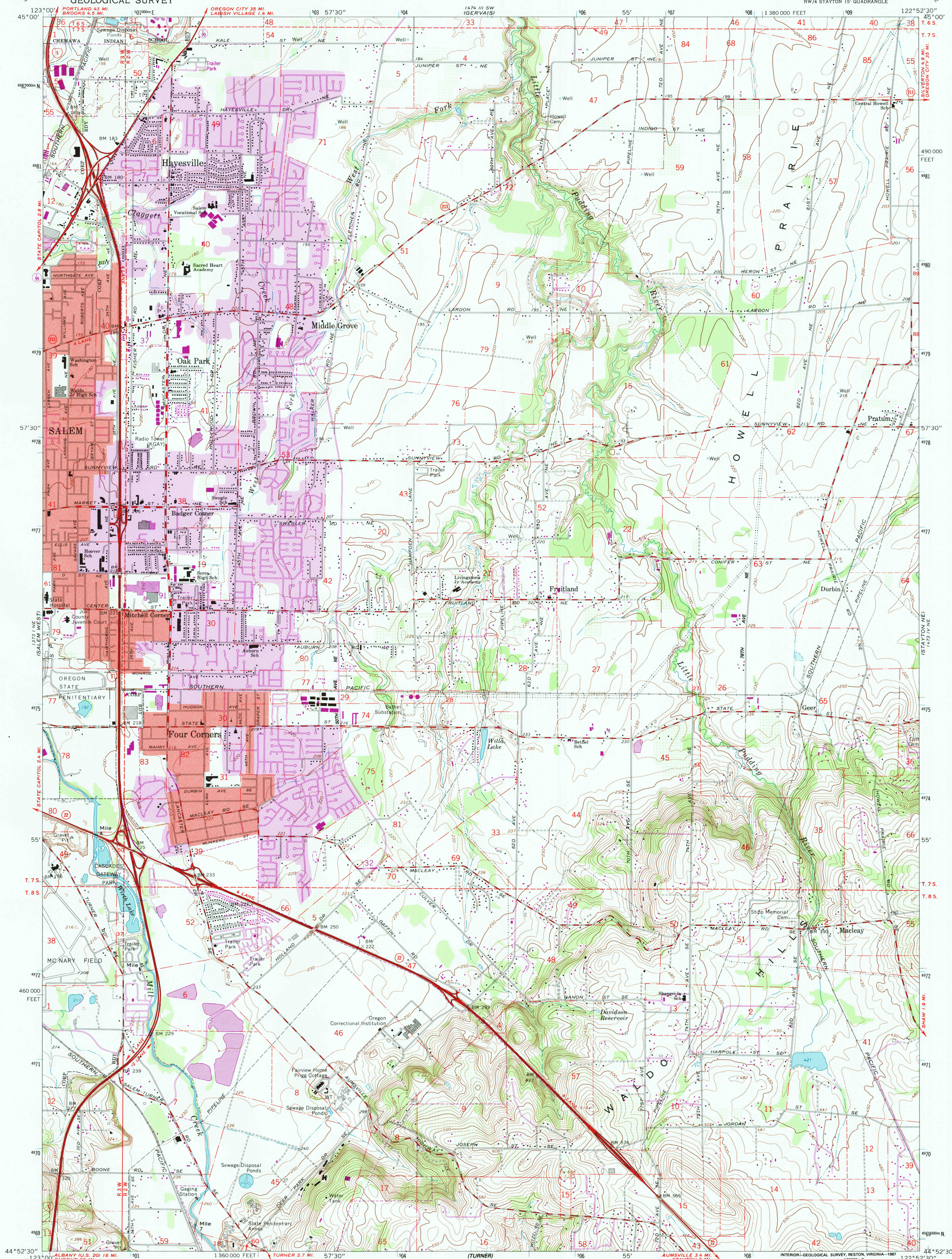


UNITED STATES
DEPARTMENT OF THE INTERIOR
GEOLOGICAL SURVEY

SALEM EAST QUADRANGLE
OREGON—MARION CO.
7.5 MINUTE SERIES (TOPOGRAPHIC)
NW/4 STAYTON 15' QUADRANGLE



Maped, edited, and published by the Geological Survey
Control by USGS, USC & GS, and State of Oregon
Topography by photogrammetric methods for aerial
photographs taken 1967. Field checked 1969
Polyconic projection. 1927 North American datum
10,000-foot grid based on Oregon coordinate system,
north zone
1000-meter Universal Transverse Mercator grid ticks,
zone 10, shown in blue
To place on the predicted North American Datum 1983,
move the projection lines 23 meters north and
95 meters east as shown by dashed corner ticks
There may be private inholdings within the boundaries of
the National or State reservations shown on this map
Red tint indicates areas in which only landmark buildings are shown
Purple tint indicates extension of urban area

UTM GRID AND 1966 MAGNETIC NORTH
DECLINATION AT CENTER OF SHEET

SCALE 1:24,000

CONTOUR INTERVAL 10 FEET
NATIONAL GEODETIC VERTICAL DATUM OF 1929

THIS MAP COMPLIES WITH NATIONAL MAP ACCURACY STANDARDS
FOR SALE BY U.S. GEOLOGICAL SURVEY, P.O. BOX 25286, DENVER, COLORADO 80225
A FOLDER DESCRIBING TOPOGRAPHIC MAPS AND SYMBOLS IS AVAILABLE ON REQUEST

ROAD CLASSIFICATION

Primary highway, all weather, hard surface	Light-duty road, all weather, improved surface
Secondary highway, all weather, hard surface	Unimproved road, fair or dry weather

Interstate Route U. S. Route State Route

SALEM EAST, OREG.

NW/4 STAYTON 15' QUADRANGLE
44122-H8-TF-024

1969
PHOTOREVISED 1986
DMA 1473 IV NW—SERIES V892

RECEIVED
OCT 31 1988
USGS NMD
HISTORICAL MAP ARCHIVES

9780607448122