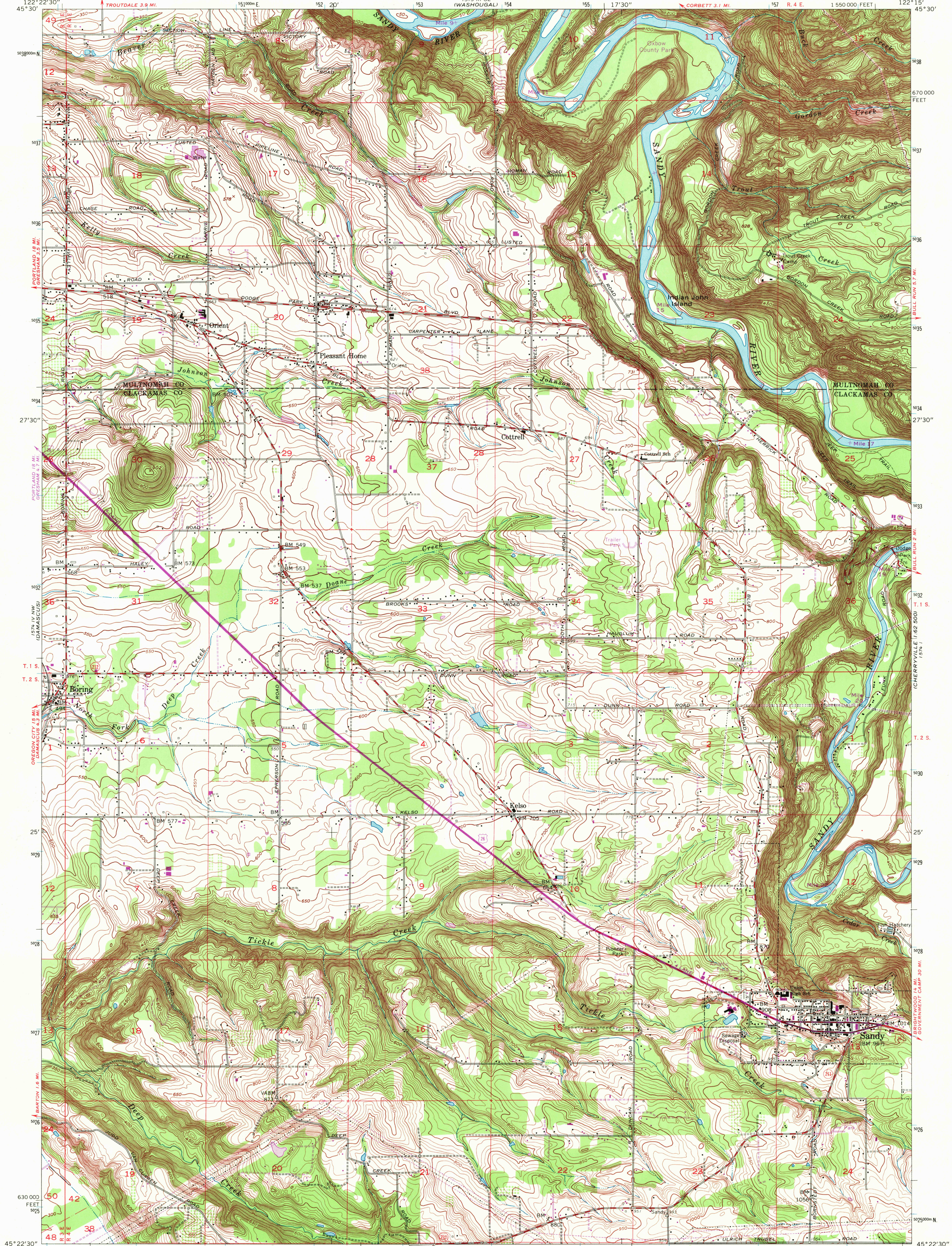


122°22'30"  
45°30'

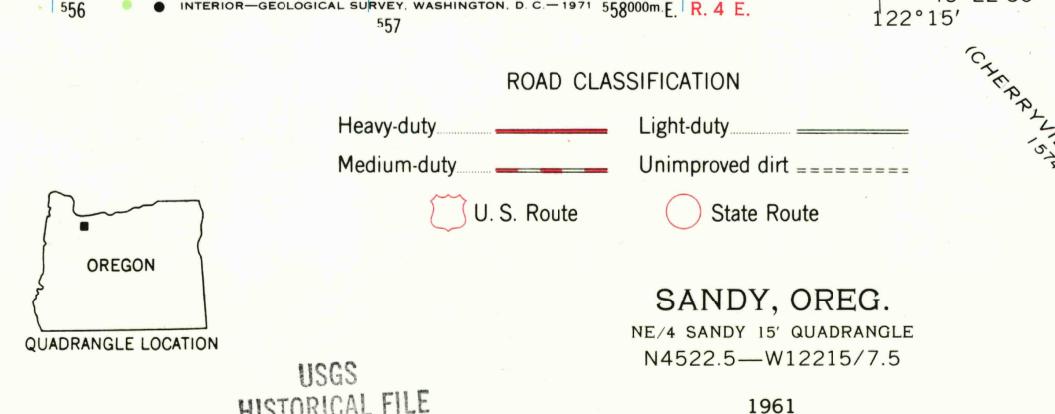
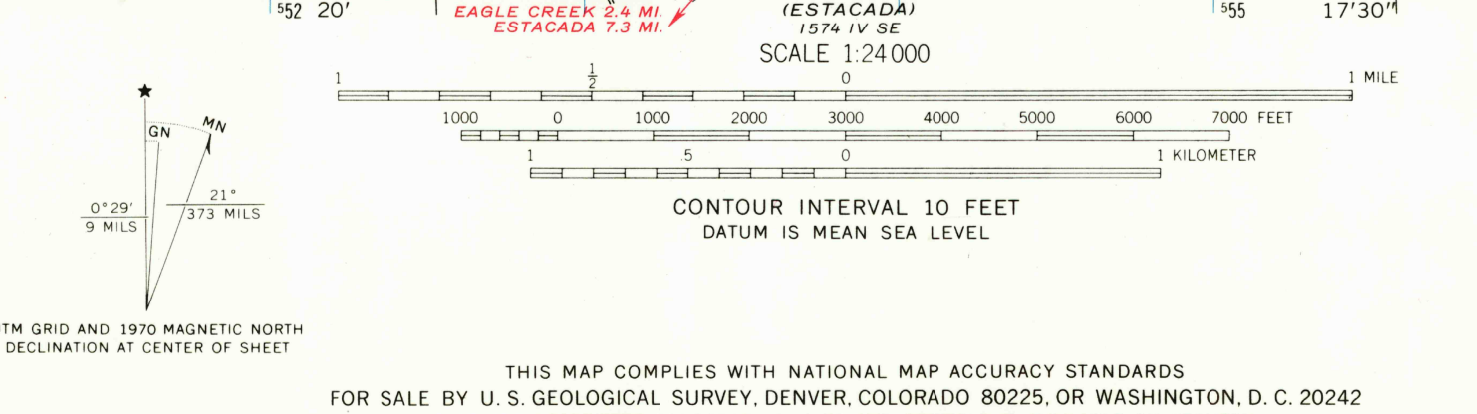
UNITED STATES  
DEPARTMENT OF THE INTERIOR  
GEOLOGICAL SURVEY

SANDY QUADRANGLE  
OREGON  
7.5 MINUTE SERIES (TOPOGRAPHIC)  
NE 1/4 SANDY 15' QUADRANGLE  
1:50,000 FEET

122°15'  
45°30'



Mapped, edited, and published by the Geological Survey  
Control by USGS, USC&GS, and State of Oregon  
Topography from aerial photographs by photogrammetric methods  
Aerial photographs taken 1952. Field check 1954  
Revised from aerial photographs taken 1960. Field check 1961  
Polyconic projection. 1927 North American datum  
10,000-foot grid based on Oregon coordinate system, north zone  
1000-meter Universal Transverse Mercator grid ticks,  
zone 10, shown in blue  
Fine red dashed lines indicate selected fence lines  
Revisions shown in purple compiled from aerial photographs  
taken 1970. This information not field checked



SANDY, OREG.  
NE 1/4 SANDY 15' QUADRANGLE  
N4522.5—W12215.7.5  
1961  
PHOTOREVISED 1970  
AMS 1574 IV NE—SERIES V892  
NOV 1 1971