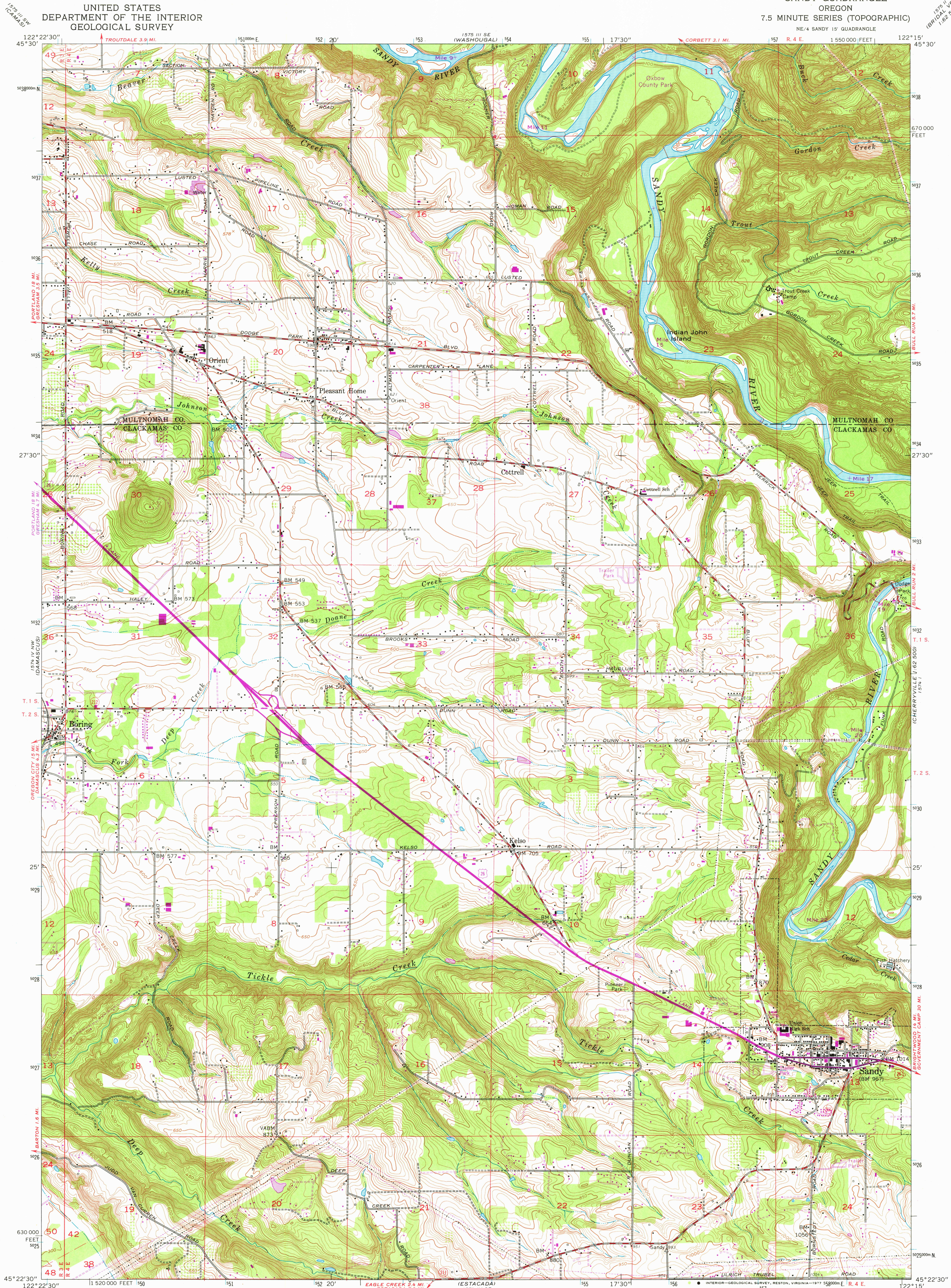
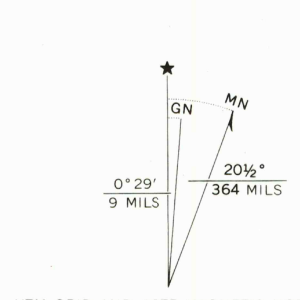


UNITED STATES
DEPARTMENT OF THE INTERIOR
GEOLOGICAL SURVEY

SANDY QUADRANGLE
OREGON
7.5 MINUTE SERIES (TOPOGRAPHIC)
NE/4 SANDY 15' QUADRANGLE



Mapped, edited, and published by the Geological Survey
Control by USGS, NOS/NOAA, and State of Oregon
Topography from aerial photographs by photogrammetric methods
Aerial photographs taken 1952. Field check 1954
Revised from aerial photographs taken 1960. Field check 1961
Polyconic projection. 1927 North American datum
10,000-foot grid based on Oregon coordinate system, north zone
1000-meter Universal Transverse Mercator grid ticks,
zone 10, shown in blue
Fine red dashed lines indicate selected fence lines
Revisions shown in purple compiled from aerial photographs
taken 1970 and 1975. This information not field checked



CONTOUR INTERVAL 10 FEET
NATIONAL GEODETIC VERTICAL DATUM OF 1929
SCALE 1:24,000
1 000 2000 3000 4000 5000 6000 7000 FEET
1 5 10 15 20 25 30 35 40 45 50 METERS
1 KILOMETER



ROAD CLASSIFICATION
Heavy-duty ——— Light-duty ———
Medium-duty ——— Unimproved dirt ———
U.S. Route State Route

USGS
Historical File
Topographic Division

SANDY, OREG.
NE/4 SANDY 15' QUADRANGLE
N4522.5—W12215.7.5

1961
PHOTOREVISED 1970 AND 1975
AMS 1574 IV NE—SERIES V892

THIS MAP COMPLIES WITH NATIONAL MAP ACCURACY STANDARDS
FOR SALE BY U.S. GEOLOGICAL SURVEY, DENVER, COLORADO 80225, OR RESTON, VIRGINIA 22092
A FOLDER DESCRIBING TOPOGRAPHIC MAPS AND SYMBOLS IS AVAILABLE ON REQUEST

JUL 06 1978
4250