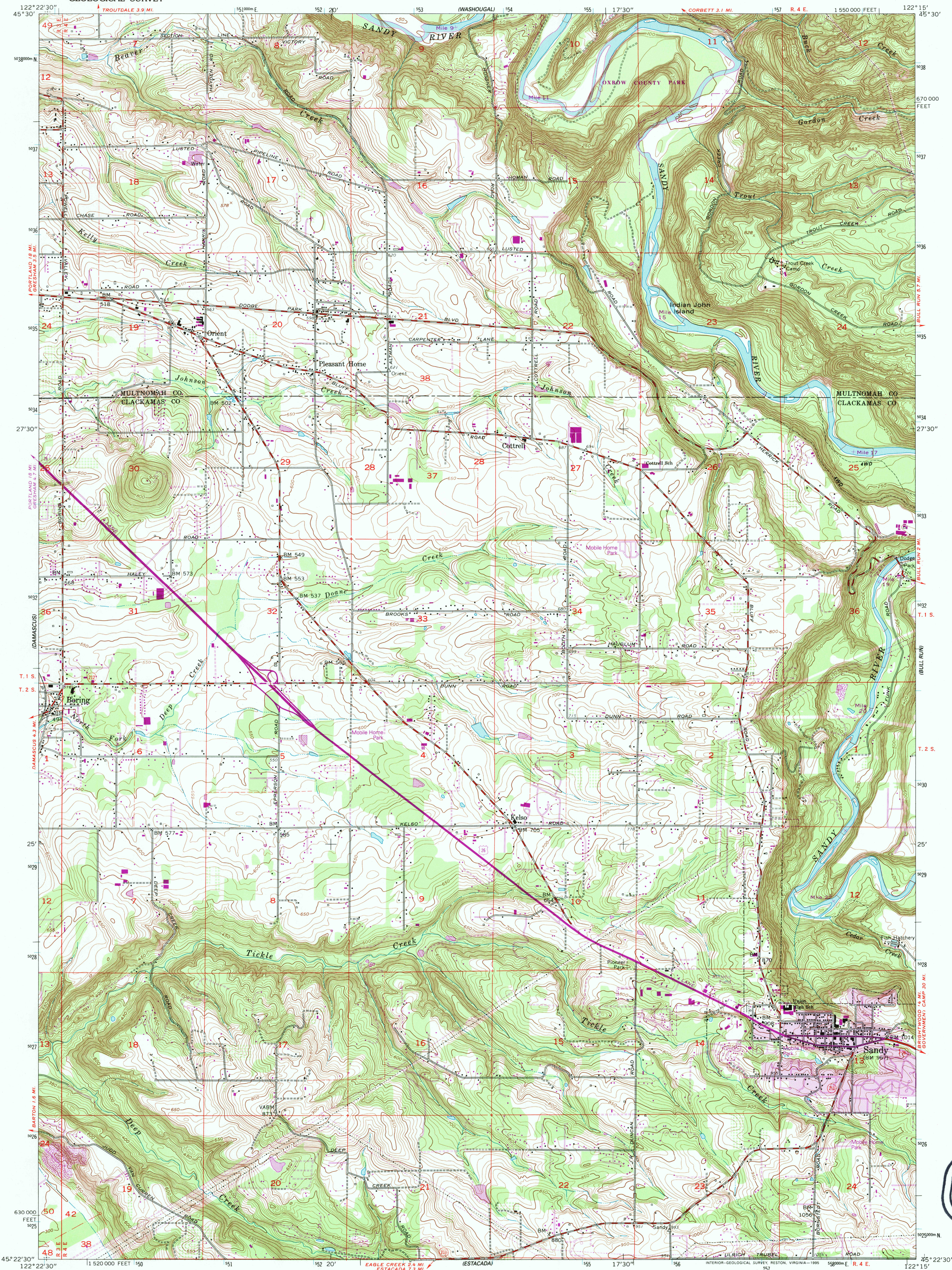


(CAMAS)

UNITED STATES
DEPARTMENT OF THE INTERIOR
GEOLOGICAL SURVEY

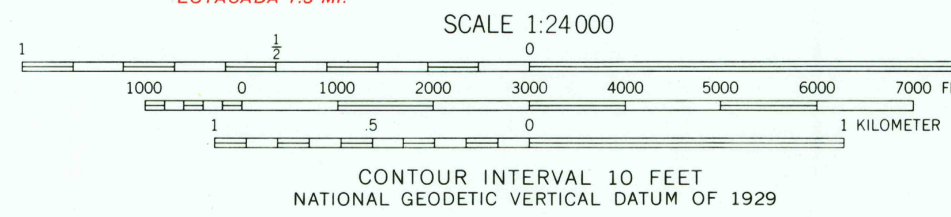
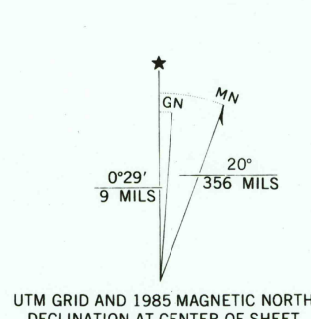
SANDY QUADRANGLE
OREGON
7.5 MINUTE SERIES (TOPOGRAPHIC)

(BRIDAL VEIL)



(REDLAND)

Produced by the United States Geological Survey
Control by USGS, NOS/NOAA, and State of Oregon
Compiled from aerial photographs taken 1952. Revised from aerial
photographs taken 1960. Field checked 1954. Map edited 1961
North American Datum of 1927 (NAD 27). Projection and
10000-foot ticks: Oregon Coordinate System, north zone
(Lambert Conformal Conic)
Blue 1000-meter Universal Transverse Mercator ticks, zone 10
North American Datum of 1983 (NAD 83) is shown by dashed
corner ticks. The values of the shift between NAD 27 and NAD 83
for 7.5-minute intersections are obtainable from National Geodetic
Survey NADCON software
Fine red dashed lines indicate selected fence lines



Revisions shown in purple compiled from aerial photographs
taken 1981 and other source data. This information not field
checked. Map edited 1985
Purple tint indicates extension of urban areas

ROAD CLASSIFICATION
Primary highway, hard surface
Secondary highway, hard surface
Unimproved road
Interstate Route
U. S. Route
State Route

USGS AND HISTORICAL
MAP ARCHIVES
JUL 21 1995
REC'D FILE COPY

(CHERRYVILLE)

THIS MAP COMPLIES WITH NATIONAL MAP ACCURACY STANDARDS
FOR SALE BY U.S. GEOLOGICAL SURVEY
DENVER, COLORADO 80225, OR RESTON, VIRGINIA 22092
A FOLDER DESCRIBING TOPOGRAPHIC MAPS AND SYMBOLS IS AVAILABLE ON REQUEST



SANDY, OR
45122-D3-TF-024

1981
PHOTOREVISED 1985
DMA 1574 IV NE-SERIES V892

