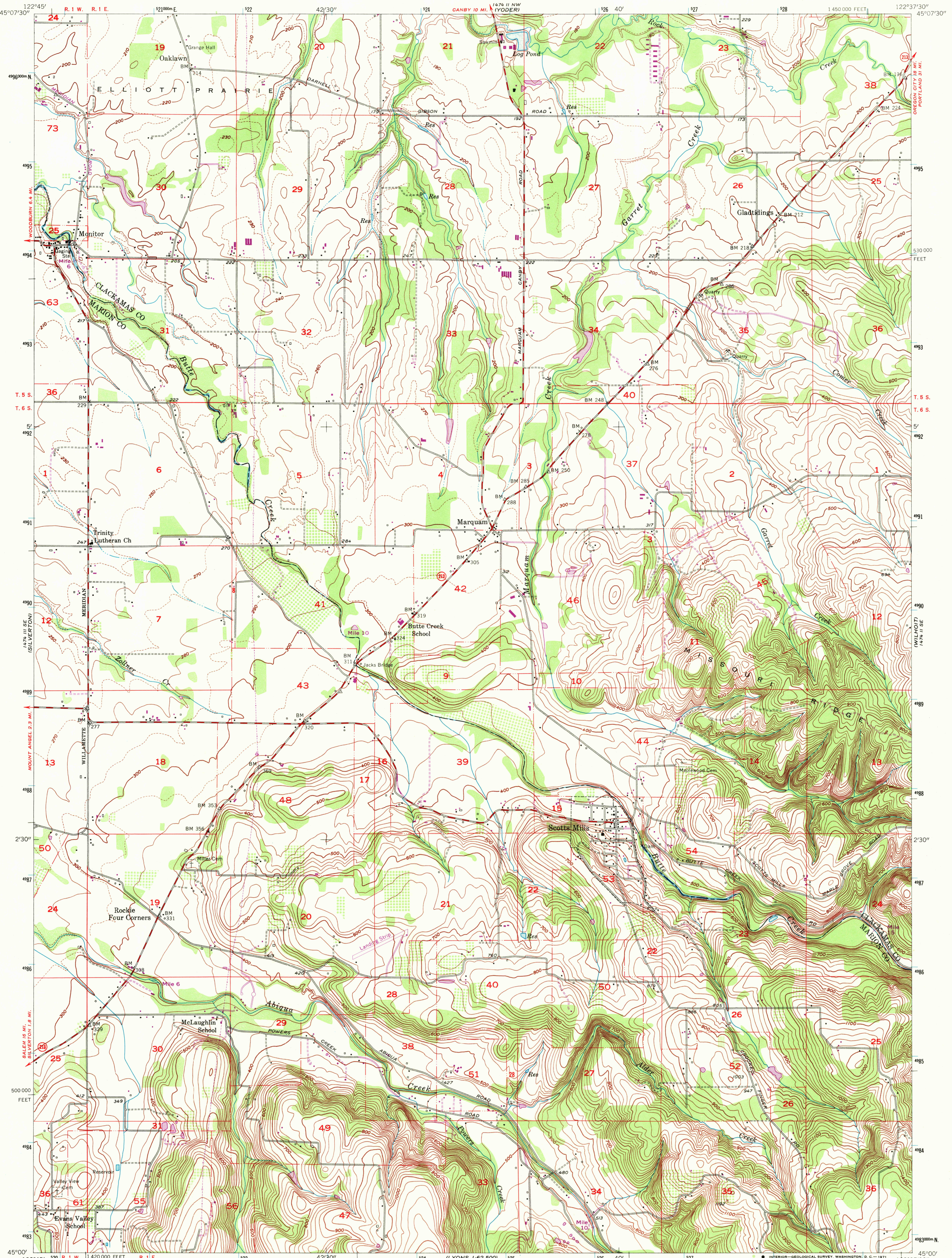


142° 11' NE
WOODBURN

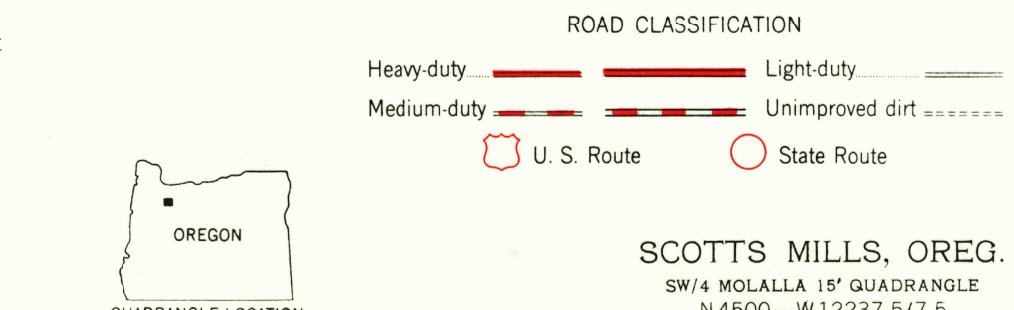
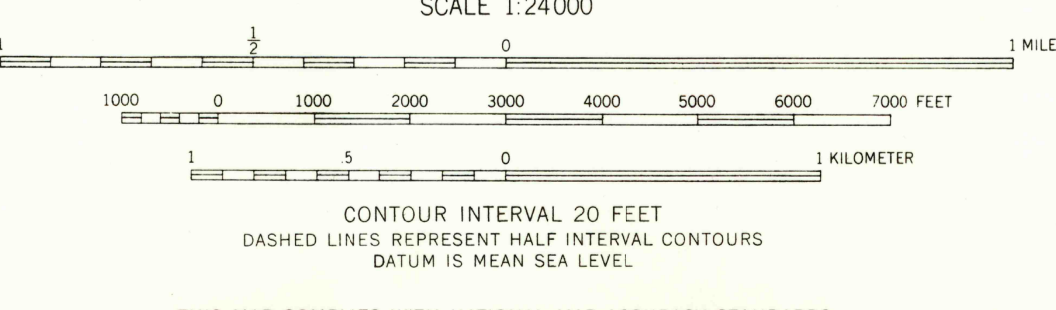
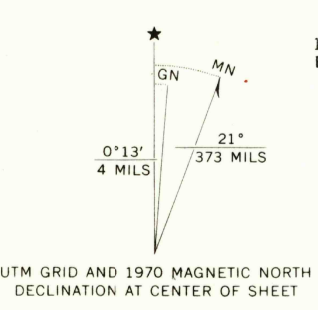
UNITED STATES
DEPARTMENT OF THE INTERIOR
GEOLOGICAL SURVEY

SCOTTS MILLS QUADRANGLE
OREGON
7.5 MINUTE SERIES (TOPOGRAPHIC)
SW/4 MOLALLA 15' QUADRANGLE

142° 11' NE
MOLALLA



Mapped, edited, and published by the Geological Survey
Control by USGS, USC&GS, USCE, and Oregon State Highway Department
Topography from aerial photographs by photogrammetric methods
Aerial photographs taken 1953. Field check 1954
Polyconic projection. 1927 North American datum
10,000-foot grid based on Oregon coordinate system, north zone
1000-meter Universal Transverse Mercator grid ticks,
zone 10, shown in blue
Revisions shown in purple compiled from aerial photographs
taken 1970. This information not field checked



SCOTTS MILLS, OREG.
SW/4 MOLALLA 15' QUADRANGLE
N4500-W12237.5/7.5
1954
PHOTOREVISED 1970
AMS 1474 II SW-SERIES V892

USGS
Historical File
Topographic Division
DEC 2 1971
2795