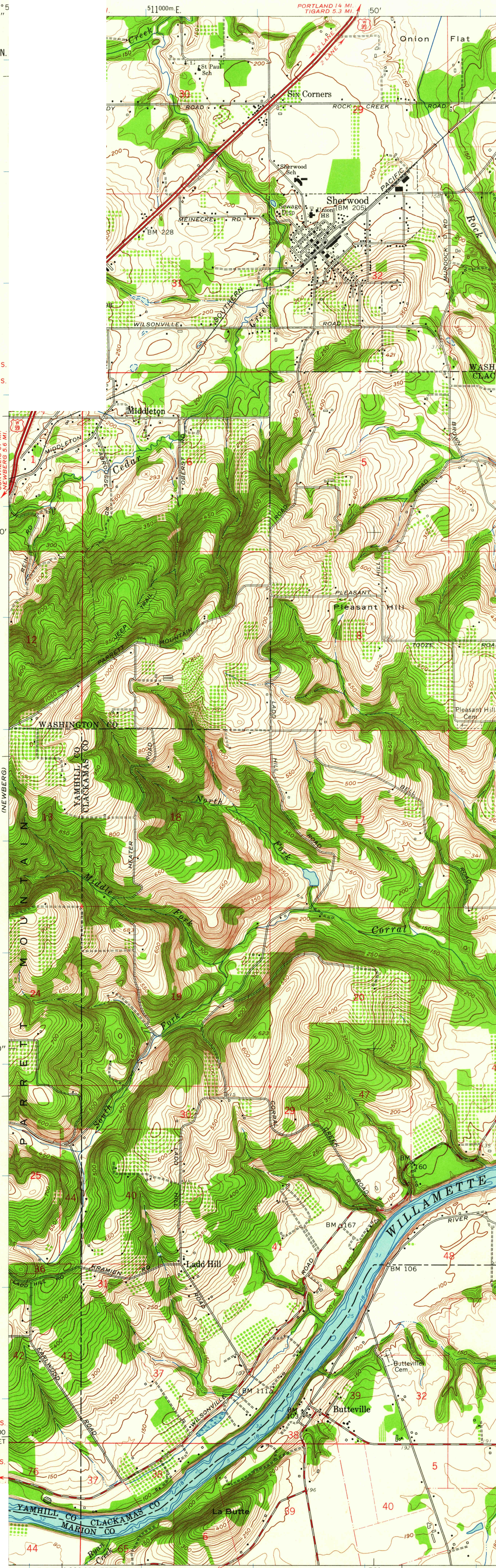


UNITED STATES
DEPARTMENT OF THE INTERIOR
GEOLOGICAL SURVEY

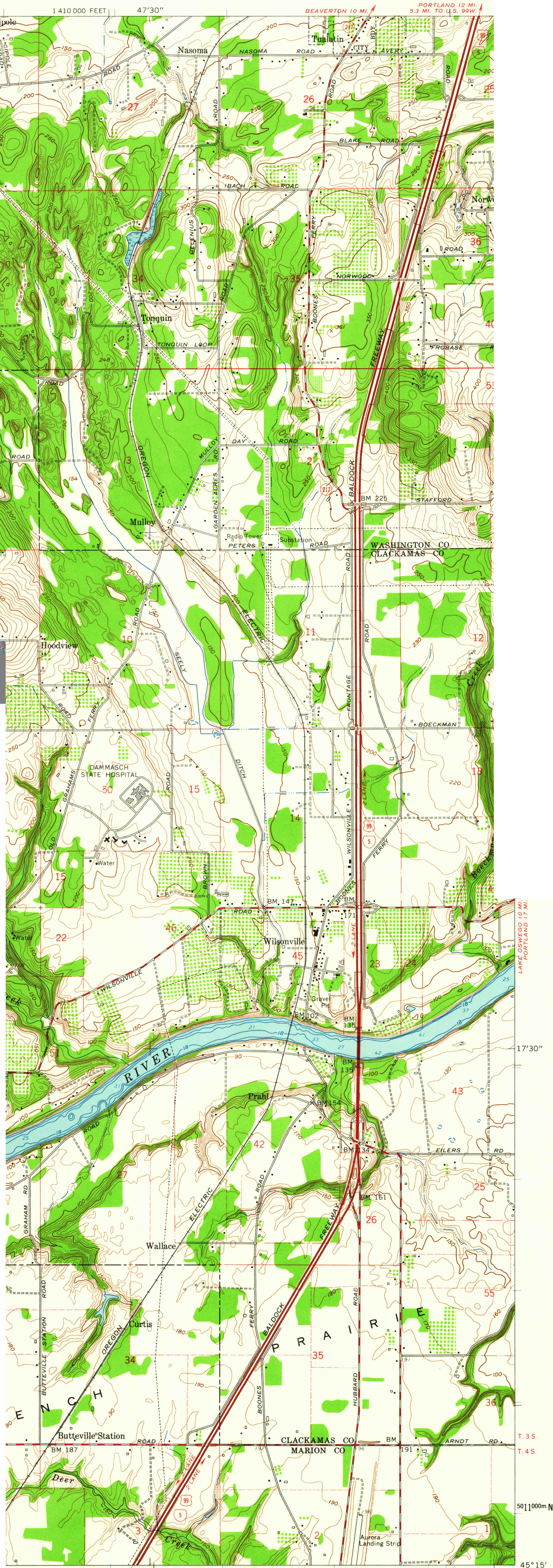
SHERWOOD QUADRANGLE
OREGON
7.5 MINUTE SERIES (TOPOGRAPHIC)
SE/4 BEAVERTON 15' QUADRANGLE



Mapped, edited, and published by the Geological Survey
Control by USGS, USC&GS, USCE, and State of Oregon
Topography from aerial photographs by photogrammetric methods
Aerial photographs taken 1952. Field check 1954
Revised from aerial photographs taken 1960. Field check 1961
Selected hydrographic data compiled from USC&GS Chart 6172 (1958)
This information not intended for navigational purposes
Polyconic projection. 1927 North American datum
10,000-foot grid based on Oregon coordinate system, north zone
1000-meter Universal Transverse Mercator grid, zone 10
shown in blue
Fine red dashed lines indicate selected fence lines

21 1/2°
TRUE NORTH
MAGNETIC NORTH
APPROXIMATE MEAN
DECLINATION, 1961

THIS MAP COMPILED
FOR SALE BY U.S. GEOLOGICAL
SURVEY
A FOLDER DESCRIBING TOP



USGS
Historical File
Topographic Division

ROAD CLASSIFICATION
Heavy-duty ——— Light-duty ———
Medium-duty ——— Unimproved dirt ———
Interstate Route U.S. Route State Route

FEET
VEL
ILLAMETTE RIVER DATUM

QUADRANGLE LOCATION

ACCURACY STANDARDS
OLORADO OR WASHINGTON 25, D. C.
BOLS IS AVAILABLE ON REQUEST

SHERWOOD, OREG.
SE/4 BEAVERTON 15' QUADRANGLE
N4515—W12245/7.5

1961

JAN 24 1962

USGS
FILE COPY
TOPOGRAPHIC DIVISION