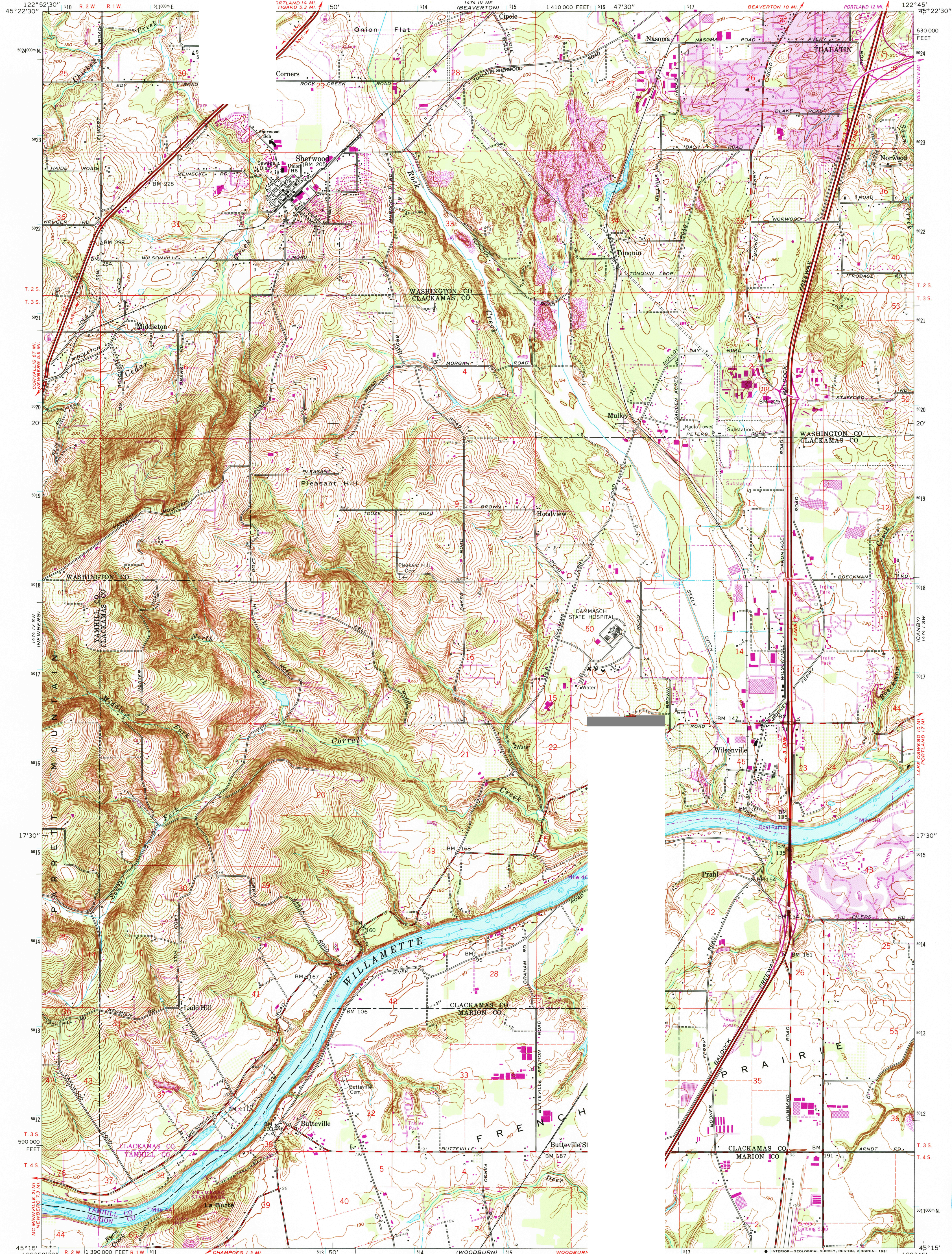


UNITED STATES
DEPARTMENT OF THE INTERIOR
GEOLOGICAL SURVEY

SHERWOOD QUADRANGLE
OREGON
7.5 MINUTE SERIES (TOPOGRAPHIC)



Mapped, edited, and published by the Geological Survey

Control by USGS, NOS/NOAA, USCE, and State of Oregon

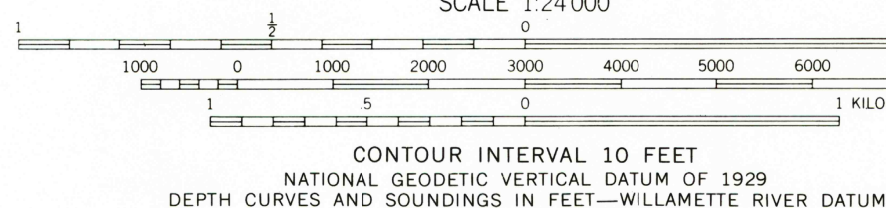
Topography by photogrammetric methods from aerial photographs taken 1952. Field checked 1954. Revised from aerial photographs taken 1960. Field checked 1961

Selected hydrographic data compiled from NOS/NOAA chart 18556. This information not intended for navigational purposes

Projection and 10,000-foot grid ticks: Oregon coordinate system, north zone (Lambert conformal conic) 1000-meter Universal Transverse Mercator grid, zone 10 1927 North American Datum

The difference between 1927 North American Datum and North American Datum of 1983 (NAD 83) for 7.5 minute intersections is given in USGS Bulletin 1875. The NAD 83 is shown by dashed corner ticks

There may be private inholdings within the boundaries of the National or State reservations shown on this map



THIS MAP COMPLIES WITH NATIONAL MAP ACCURACY STANDARDS
FOR SALE BY U.S. GEOLOGICAL SURVEY, DENVER, COLORADO 80225, OR RESTON, VIRG
A FOLDER DESCRIBING TOPOGRAPHIC MAPS AND SYMBOLS IS AVAILABLE ON REQUEST



QUADRANGLE LOCATION

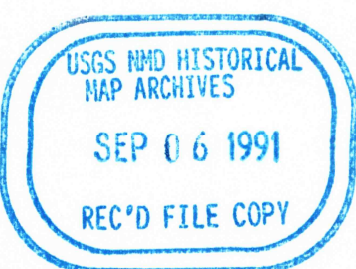
ROAD CLASSIFICATION	
Heavy-duty	Light-duty
Medium-duty	Unimproved dirt
Interstate Route	U.S. Route
	State Route

SHERWOOD, OREG.

45122-C7-TF-024

Maps shown in purple compiled from aerial
photographs taken 1981 and other sources
Information not field checked. Map edited 1985
Tint indicates extensions of urban area

1961
PHOTOREVISED 1985
DMA 1474 IV SE-SERIES V892



06 SEP 1991