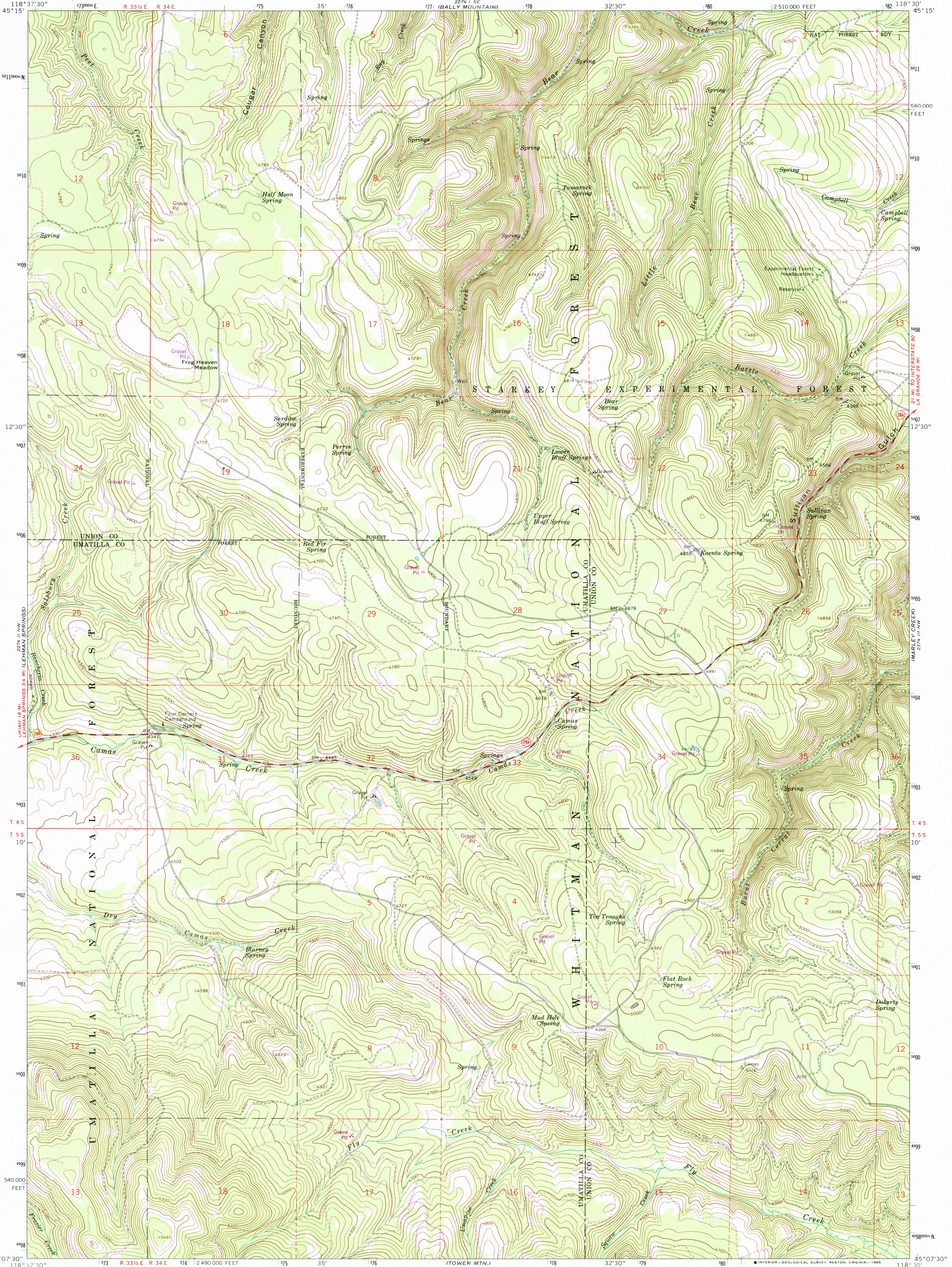


UNITED STATES  
DEPARTMENT OF THE INTERIOR  
GEOLOGICAL SURVEY

SULLIVAN GULCH QUADRANGLE  
OREGON  
7.5 MINUTE SERIES (TOPOGRAPHIC)



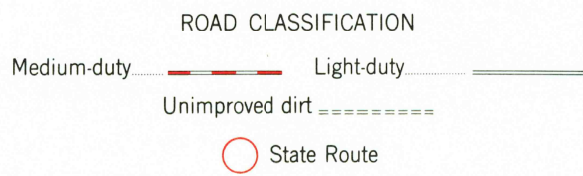
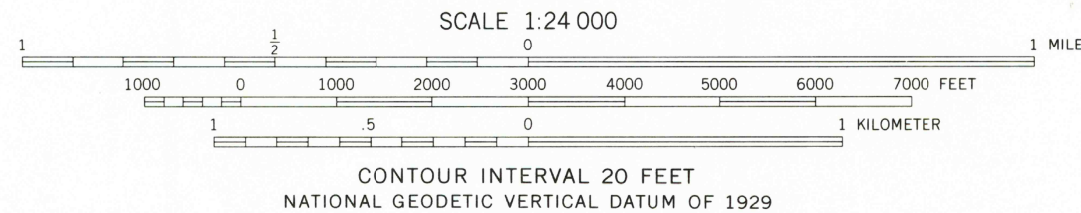
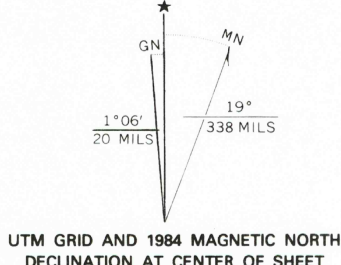
Mapped, edited, and published by the Geological Survey  
Control by USGS and NOS/NOAA

Topography by photogrammetric methods from aerial  
photographs taken 1965. Field checked 1967

Polyconic projection. 1927 North American datum  
10,000-foot grid based on Oregon coordinate system,  
north zone

1000-meter Universal Transverse Mercator grid ticks,  
zone 11, shown in blue

To place on the predicted North American Datum 1983  
move the projection lines 18 meters north and  
83 meters east as shown by dashed corner ticks  
There may be private inholdings within the boundaries of  
the National or State reservations shown on this map



SULLIVAN GULCH, OREG.  
45118-B5-TF-024

1967  
PHOTOREVISED 1984  
DMA 2274 II NE-SERIES V892

THIS MAP COMPLIES WITH NATIONAL MAP ACCURACY STANDARDS  
FOR SALE BY U. S. GEOLOGICAL SURVEY, DENVER, COLORADO 80225, OR RESTON, VIRGINIA 22092  
A FOLDER DESCRIBING TOPOGRAPHIC MAPS AND SYMBOLS IS AVAILABLE ON REQUEST

Revision shown in purple and woodland compiled from  
aerial photographs taken 1981 and other sources  
Partial field check by U.S. Forest Service Map edited 1984