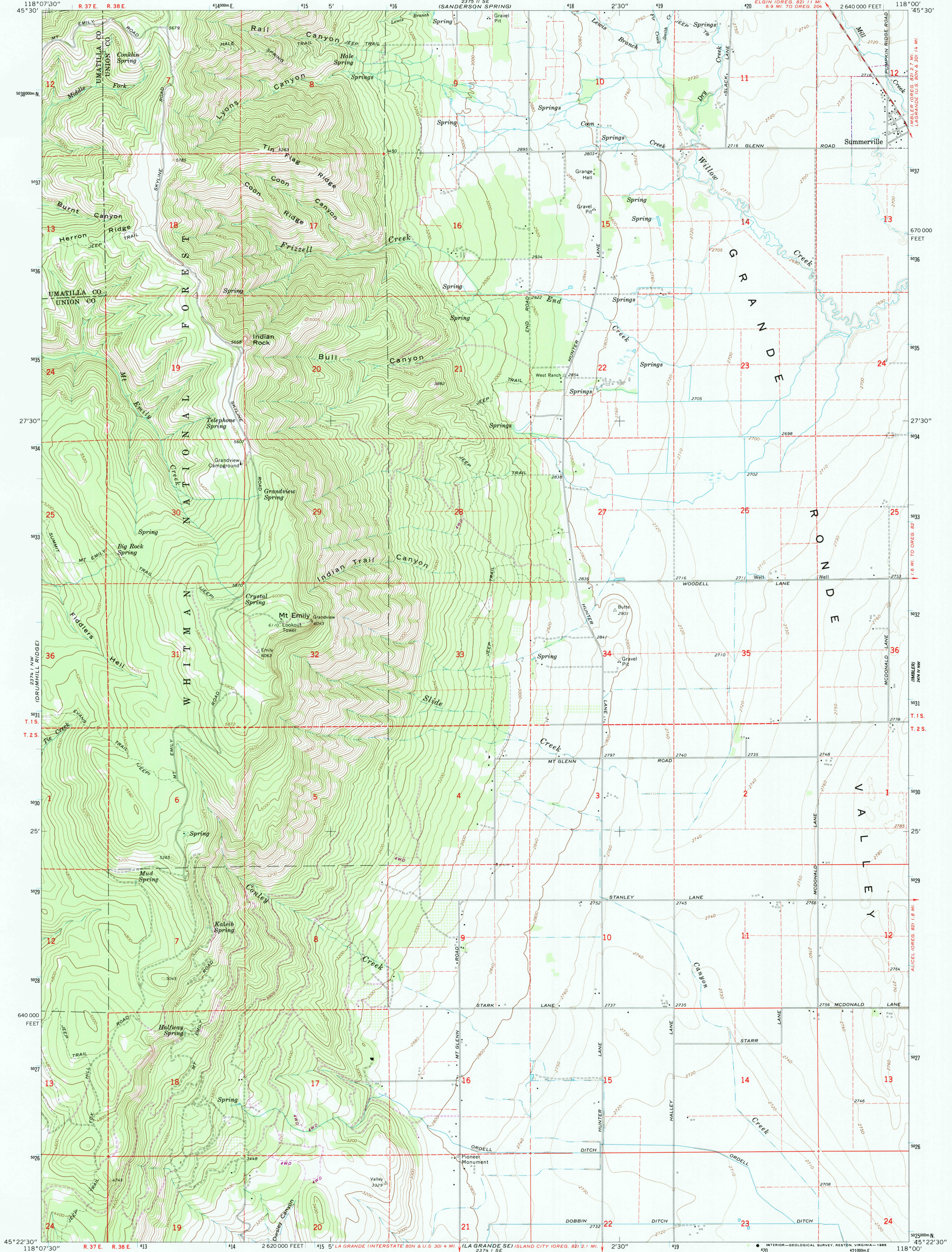


UNITED STATES  
DEPARTMENT OF THE INTERIOR  
GEOLOGICAL SURVEY

SUMMERVILLE QUADRANGLE  
OREGON  
7.5 MINUTE SERIES (TOPOGRAPHIC)



Mapped, edited, and published by the Geological Survey

Control by USGS and NOS/NOAA

Topography by photogrammetric methods from aerial

photographs taken 1957 and planimetric surveys 1963

Polyconic projection. 1927 North American datum

10,000-foot grid based on Oregon coordinate system, north zone

1000-meter Universal Transverse Mercator grid ticks,

zone 11, shown in blue

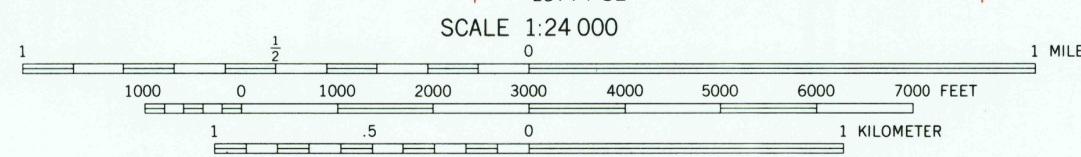
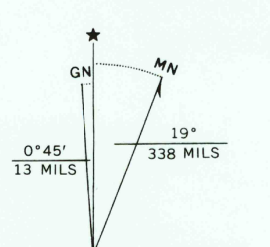
To place on the predicted North American Datum 1983

move the projection lines 18 meters north and

81 meters east as shown by dashed corner ticks

There may be private inholdings within the boundaries of

the National or State reservations shown on this map



ROAD CLASSIFICATION  
Medium-duty ——— Light-duty ———  
Unimproved dirt ———

SUMMERVILLE, OREG.  
45118-D1-TF-024

THIS MAP COMPLIES WITH NATIONAL MAP ACCURACY STANDARDS  
FOR SALE BY U. S. GEOLOGICAL SURVEY, DENVER, COLORADO 80225, OR RESTON, VIRGINIA 22092  
A FOLDER DESCRIBING TOPOGRAPHIC MAPS AND SYMBOLS IS AVAILABLE ON REQUEST

Revision shown in purple and woodland compiled from  
aerial photographs taken 1981 and other sources  
Partial field check by U.S. Forest Service. Map edited 1984

1963  
PHOTOREVISED 1984  
DMA 2374 I NE-SERIES V892