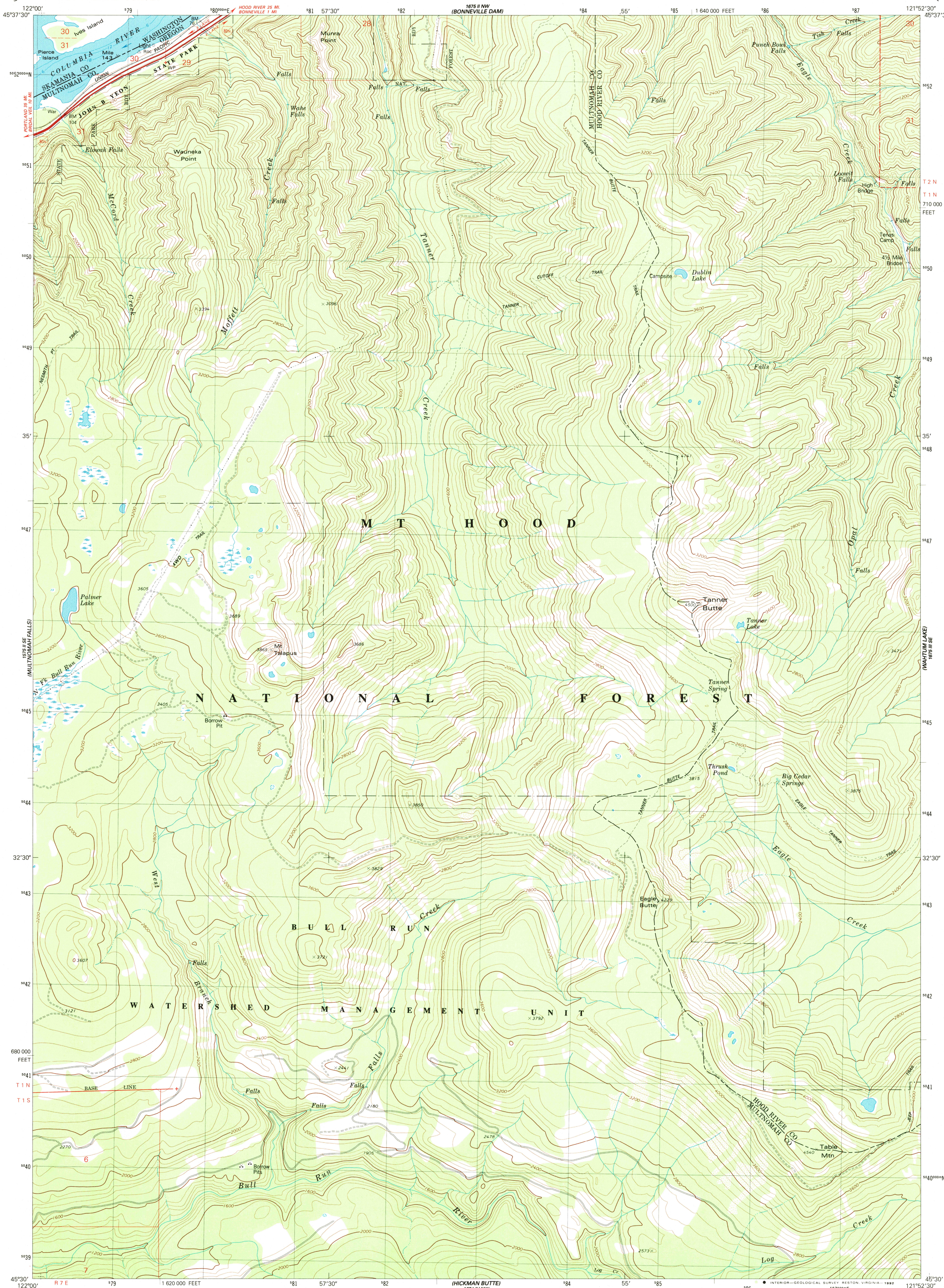


1675 III SW-SERIES V892
REASON FOR
REASON FOR

UNITED STATES
DEPARTMENT OF THE INTERIOR
GEOLOGICAL SURVEY

TANNER BUTTE QUADRANGLE
OREGON-WASHINGTON
7.5 MINUTE SERIES (TOPOGRAPHIC)

1675 III SW-SERIES V892
REASON FOR
REASON FOR



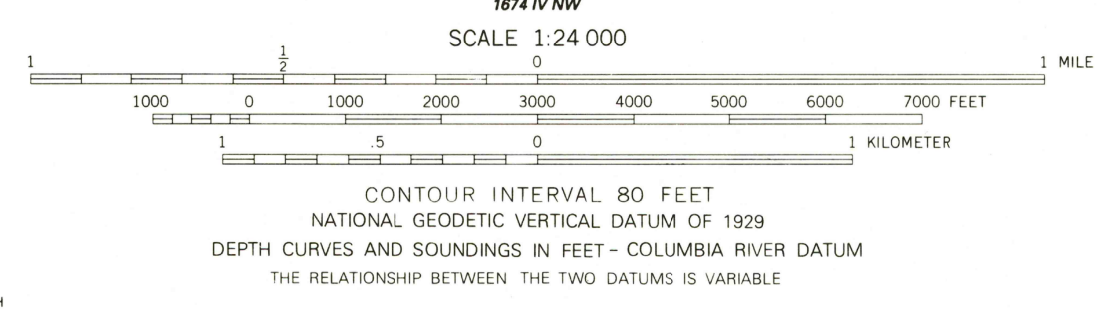
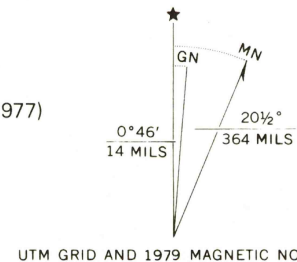
Mapped, edited, and published by the Geological Survey

Control by USGS and NOS/NOAA

Topography by photogrammetric methods from aerial
photographs taken 1973. Field checked 1976. Map edited 1979
Selected hydrographic data compiled from NOS/NOAA Chart 18531 (1977)
This information is not intended for navigational purposes

Projection and 10,000-foot grid ticks: Oregon coordinate
system, north zone (Lambert conformal conic)
1000-meter Universal Transverse Mercator grid, zone 10
1927 North American Datum
To place on the predicted North American Datum 1983
move the projection lines 22 meters north and
92 meters east as shown by dashed corner ticks

There may be private inholdings within the boundaries of
the National or State reservations shown on this map



ROAD CLASSIFICATION	
Primary highway, hard surface	Light-duty road, hard or improved surface
Secondary highway, hard surface	Unimproved road
Interstate Route	U. S. Route
	State Route

TANNER BUTTE, OREG.-WASH.
45121-E8-TF-024

1979

DMA 1675 III SW-SERIES V892

