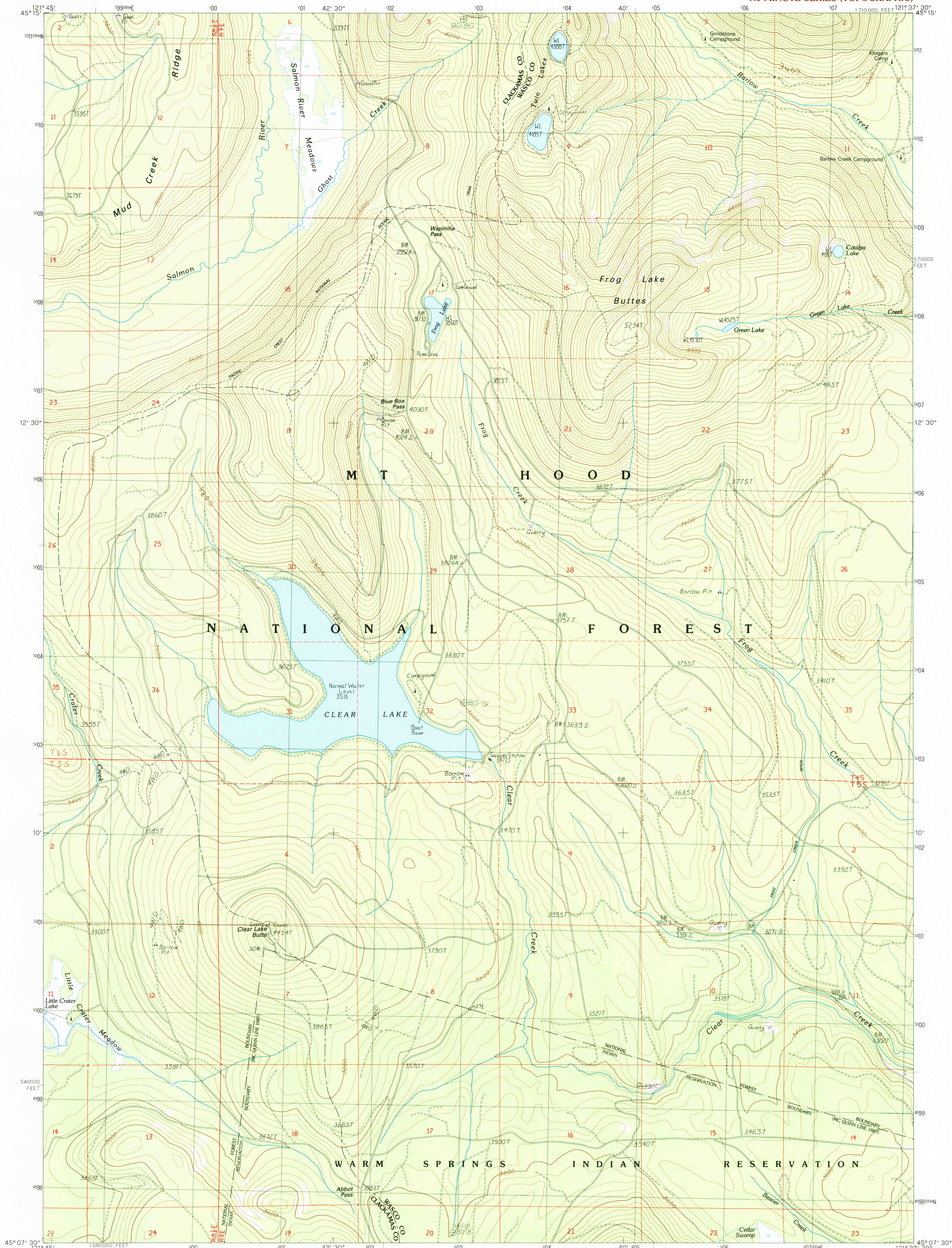


UNITED STATES  
DEPARTMENT OF THE INTERIOR  
GEOLOGICAL SURVEY

WAPINITIA PASS QUADRANGLE  
OREGON  
7.5 MINUTE SERIES (TOPOGRAPHIC)



PRODUCED BY THE UNITED STATES GEOLOGICAL SURVEY  
CONTROL BY USGS, NOS/NOAA  
COMPILED FROM AERIAL PHOTOGRAPHS TAKEN 1981  
FIELD CHECKED 1983 MAP EDITED 1985  
PROJECTION LAMBERT CONFORMAL CONIC  
GRID: 1000-METER UNIVERSAL TRANSVERSE MERCATOR ZONE 10  
10,000-FOOT STATE GRID TICKS DREGON, NORTH ZONE  
UTM GRID DECLINATION 056° EAST  
1980 MAGNETIC NORTH DECLINATION 1990° EAST  
VERTICAL DATUM NATIONAL GEODETIC VERTICAL DATUM OF 1929  
HORIZONTAL DATUM 1927 NORTH AMERICAN DATUM  
To place on the predicted North American Datum of 1983,  
move the projection lines as shown by dashed corner ticks  
(22 meters north, 92 meters east).  
There may be private inholdings within the boundaries of any  
Federal and State Reservations shown on this map

**PROVISIONAL MAP**  
Produced from original  
manuscript drawings. Informa-  
tion shown as of date of  
photography.

SCALE 1:24 000  
1 000 0 1000 2000  
1 000 0 1000 2000  
KILOMETERS  
METERS  
MILES  
FOOT  
CONTOUR INTERVAL 40 FEET  
CONTROL ELEVATIONS SHOWN TO THE NEAREST 0.1 FOOT  
OTHER ELEVATIONS SHOWN TO THE NEAREST FOOT  
To convert meters to feet multiply by 3.2808  
To convert feet to meters multiply by 0.3048

1	2	3
4	5	6
7	8	

ADJOINING 7.5' QUADRANGLE NAMES

ROAD LEGEND

Improved Road  
Unimproved Road  
Trail  
Interstate Route  
U.S. Route  
State Route

WAPINITIA PASS, OREG.  
PROVISIONAL EDITION 1985

45121-B6-TF-024

